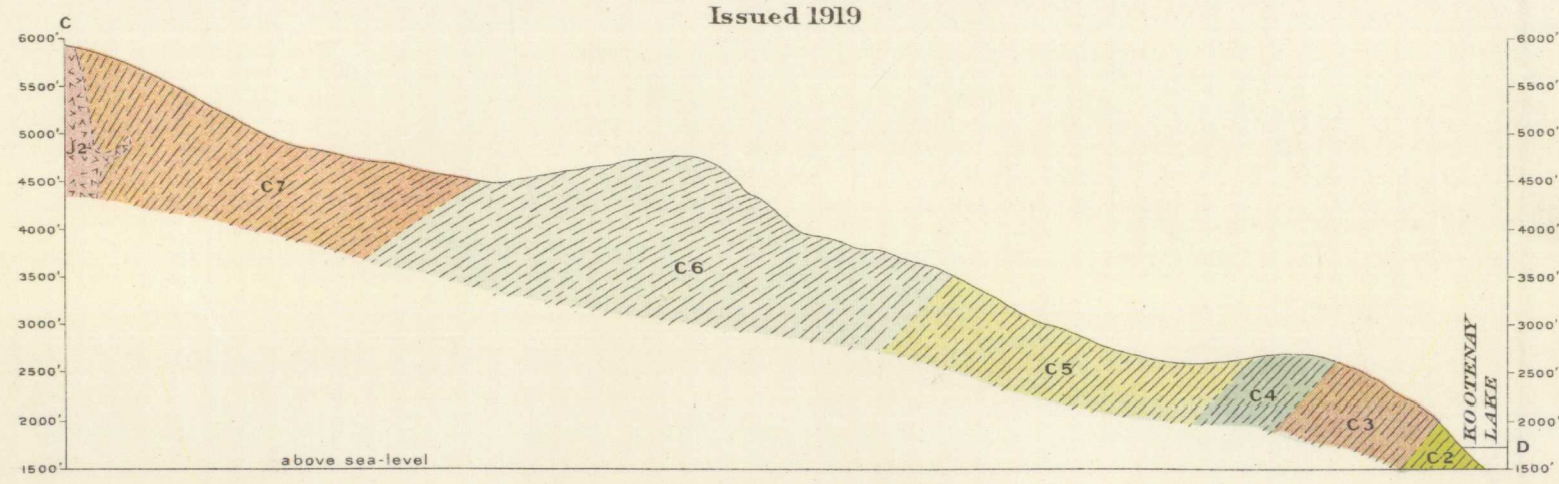


Canada  
Department of Mines

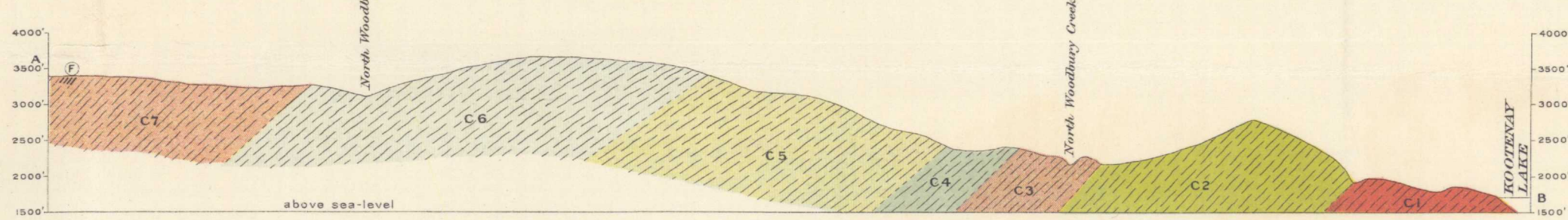
HON. MARTIN BURRELL, MINISTER; R. G. M'CONNELL, DEPUTY MINISTER.

GEOLOGICAL SURVEY  
WILLIAM M'FINNES, DIRECTING GEOLOGIST.

Issued 1919



Structural section along line C D  
Scale, horizontal and vertical, 25,000



Structural section along line A B  
Scale, horizontal and vertical, 25,000



LEGEND

- |            |                                    |   |
|------------|------------------------------------|---|
| QUATERNARY | GLACIAL AND RECENT                 | Q2<br>Calcareous tufa   |
|            |                                    | Q1<br>Fluvio-glacial deposits (silt, sand and gravel)                           |
| MESOZOIC   | JURASSIC                           | J3<br>Lampyrre dykes  |
|            |                                    | J2<br>Nelson batholith (granulite and granite)                                  |
|            |                                    | J1<br>Granitic granite  |
| PALEOZOIC  | CARBONIFEROUS                      | C7<br>Skelvins formation (argillites, limestones, and fossiliferous limestones) |
|            |                                    | C6<br>Silver Hoard formation (limestones, argillites, and staurolite schists)   |
|            |                                    | C5<br>Josephine formation (hornblende schists, quartzites, and limestones)      |
|            |                                    | C4<br>Ainsworth formation (limestones)  |
|            | CARBONIFEROUS OR PRE-CARBONIFEROUS | C3<br>Princess formation (garnetiferous mica schists, and quartzites)           |
|            |                                    | C2<br>Early Bird formation (siliceous limestones)                               |
|            |                                    | C1<br>Point Woodbury formation (garnetiferous mica schists, and quartzites)     |
- 
- Symbols**
- Geological boundary (contact observed)
  - Geological boundary (gradational)
  - Geological boundary (position assumed)
  - Dip and strike
  - Fossil locality

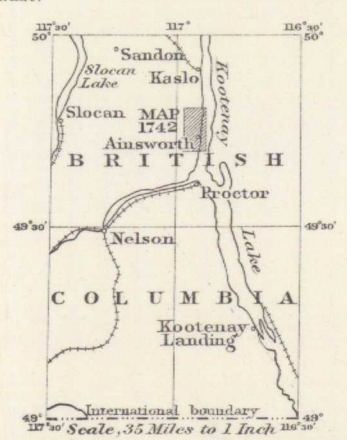
LEGEND

- Culture**
- Roads and buildings
  - Pack trails
  - Trails
  - Mine tramways
  - Aerial tramways
  - Churches
  - Post offices
  - Cemetaries
  - Shaft houses
  - Shafts
  - Tunnels
  - Dams
- Water**
- Rivers and lakes
  - Watercourses (with intermittent flow)
  - Springs and sinks
  - Marshes
- Relief**
- Contours (showing local forms and elevations above sea level. Interval, 50 feet)
  - Mine dumps

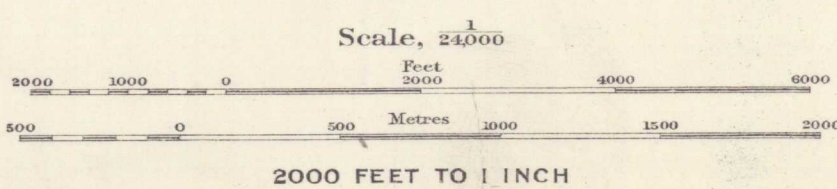
Determination of contours based on Highland Mill Compressor bench mark, elevation 1791 feet.  
Approximate magnetic declination, 24° 40' East.

C. O. Senior, Geographer and Chief Draughtsman.  
A. Jones, Draughtsman.

Publication No. 1742



AINSWORTH  
KOOTENAY DISTRICT  
BRITISH COLUMBIA



GEOLOGY  
S. J. SCHOFIELD, 1915 AND 1918.

TOPOGRAPHY  
F. S. FALCONER, 1914-1915.

NOT TO BE TAKEN FROM LIBRARY  
NE PAS SORTIR DE LA BIBLIOTHÈQUE

2742