

Sections along lines A-B, C-D, E-F, and G-H  
VERTICAL SCALE, 1 INCH TO 2 MILES

SHEET 104 N

LEGEND

- QUATERNARY**  
PLEISTOCENE AND RECENT  
17 Glacial drift; alluvium
- TERTIARY AND QUATERNARY**  
16 Olivine basalt and scoria; 16a, Tertiary; 16b, Pleistocene
- TERTIARY (?)**  
15 15a, quartz monzonite; 15b, granophyre; 15c, gabbro and diorite
- CRETACEOUS OR TERTIARY**  
SLOKO GROUP  
14 Andesite, basalt, albite trachyte, albite rhyolite, dacite, and related pyroclastic rocks; conglomerate, sandstone
- CRETACEOUS**  
13 13a, alaskite; 13b, quartz monzonite
- JURASSIC** (May be in part older and younger)  
COAST INTRUSIONS  
12 Undifferentiated granitic rocks; 12a, Black Mountain body, 12b, Fourth of July Creek body; 12c, pink granite; 12d, Mount McMaster body; 12e, diorite; 12f, alkaline granite
- JURASSIC**  
LABERGE GROUP  
11 Volcanic greywacke, siltstone, mudstone, shale, conglomerate; minor concretionary sandy limestone
- TRIASSIC (?)**  
10 Greywacke, chert, argillite, conglomerate, tuff, slate, greenstone, impure limestone, Jasper
- PENNSYLVANIAN AND PERMIAN**  
ATLIN INTRUSIONS  
9a, andesite, meta-diorite and meta-gabbro; 9b, carbonized serpentinite; 9c, talc-bearing (steatized) ultramafic rocks
- CACHE CREEK GROUP**  
6, 7, 8  
6, Chert, argillite, chert-gabbro conglomerate and chert breccia; derived quartzite and schist; minor 7 and 8  
7, Greenstone and volcanic greywacke; derived amphibolite; minor 6 and 8  
8, Limestone and limestone breccia
- PENNSYLVANIAN AND/OR PERMIAN**  
4, 5  
4, Andesite, basalt, and related pyroclastic rocks; conglomerate, sandstone, shale  
5, Limestone  
May be in part or wholly equivalent to 6, 7, 8
- MISSISSIPPIAN AND/OR EARLIER**  
SYLVESTER GROUP  
3a, greenstone, chlorite schist, greywacke, quartzite, quartz-biotite schist; 3b, impure crystalline limestone
- PRE-PERMIAN**  
2 Quartz monzonite
- YUKON GROUP**  
1 Hornblende-quartz-feldspar schist and gneiss; quartzite, crystalline limestone. May be in part equivalent to 3
- A** Undifferentiated, mainly volcanic rocks of uncertain, possibly several, ages. Andesite, basalt, agglomerate, tuff, breccia; diorite and quartz diorite porphyries; rhyolite. In part probably Triassic, probably equivalent to 10

- Bedding (horizontal, inclined, vertical, overturned) ..... + / / / /  
Bedding (direction of dip known, upper side of bed unknown) ..... / / / /  
Schistosity or slaty cleavage (inclined, vertical) ..... / / / /  
Fault (defined, approximate, assumed) ..... - - - - -  
Anticline (arrow indicates direction of plunge) ..... ~ ~ ~ ~ ~  
Syncline (arrow indicates direction of plunge) ..... ~ ~ ~ ~ ~  
Fossil locality ..... (O)  
Fossil locality (referred to in Table III) ..... (O)  
Mineral occurrence ..... (X)

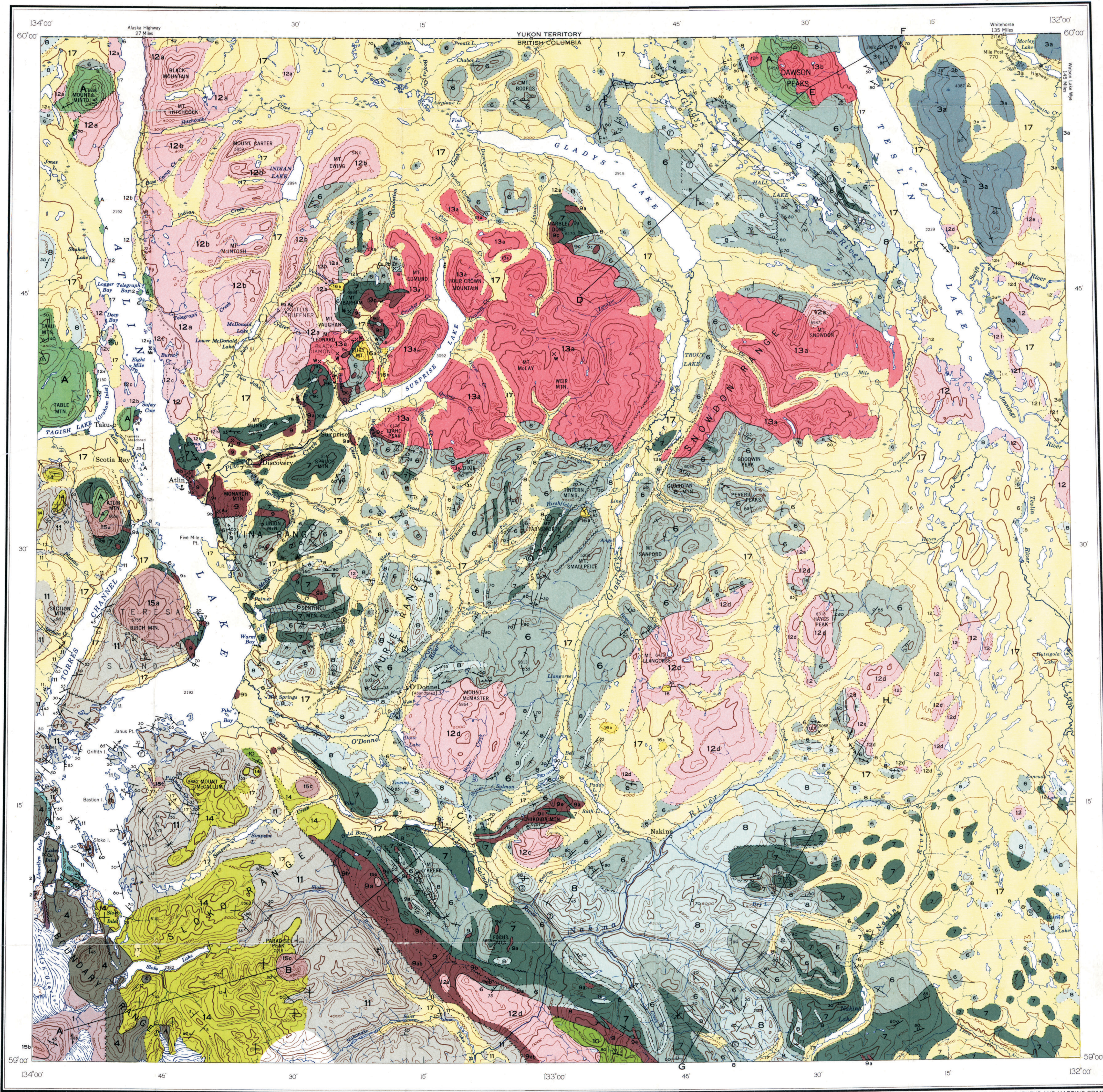
**MINERAL SYMBOLS**  
(Lode occurrences only)

Copper	Cu	Silver	Ag
Gold	Au	Tungsten	W
Lead	Pb	Uranium	U
Molybdenum	Mo	Zinc	Zn
Nickel	Ni		

Geology by J. D. Atken, 1951, 1952, 1953, 1954, 1955  
To accompany G.S.C. Memoir 307, by J. D. Atken  
Cartography by the Geological Survey of Canada, 1959

Air photographs covering this map-area may be obtained through the National Air Photographic Library, Topographical Survey, Ottawa, Ontario

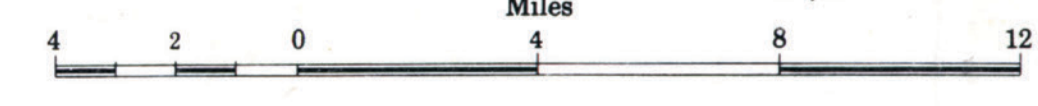
Approximate magnetic declination 31° 31' East



PUBLISHED, 1960  
COPIES OF THIS MAP MAY BE OBTAINED FROM THE DIRECTOR, GEOLOGICAL SURVEY OF CANADA, OTTAWA

MAP 1082A  
GEOLOGY  
**ATLIN**  
CASSIAR DISTRICT  
BRITISH COLUMBIA

Scale: One Inch to Four Miles = 1/253,440



This map has been reprinted from a scanned version of the original map.  
Reproduction par numérisation d'une carte sur papier.

REFERENCE

- Road and buildings .....  
Road not well travelled .....  
Trail .....  
Telephone line .....  
Post Office .....  
Wireless station .....  
Wharf .....  
Seaplane anchorage .....  
Landing ground .....  
Horizontal control point .....  
Boundary monument .....  
Provincial boundary .....  
Indian Reserve boundary .....  
Intermittent stream .....  
Braided stream .....  
Glacier .....  
Glacial wash .....  
Marsh or swamp .....  
Sand or mud .....  
Contours (interval 500 feet) .....  
Height in feet above mean sea-level .....

