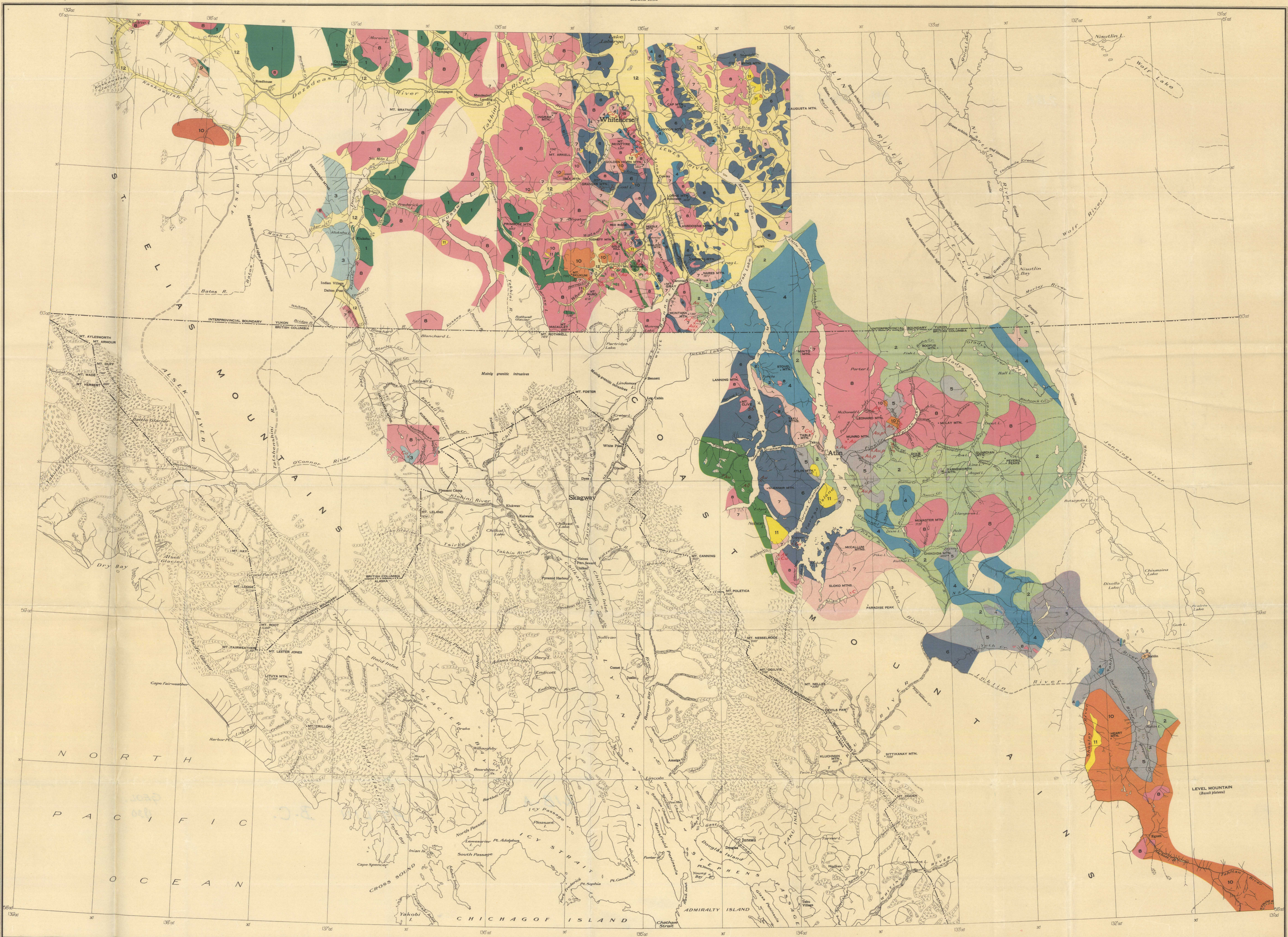


LEGEND

- RECENT AND PLEISTOCENE**
- 12 Recent alluvium and glacial drift
- TERTIARY AND PART OF QUATERNARY**
- 11 Shybole, tuff, and their tuffs, granite porphyry
- 10 "NEWER VOLCANICS" (andesite, basalt, and their tuffs and breccias)
- TERTIARY**
- EOCENE (?)
- 9 KENAI SERIES (conglomerate, shale, clay, sandstone, lignite seams)
- MESOZOIC**
- JURASSIC OR LATER
- 8 COAST RANGE INTRUSIVES (ranging from granite to gabbro)
- JURASSIC
- 7 "OLDER VOLCANICS" (andesite, diorite, basalt, and their tuffs and breccias)
- LOWER AND MIDDLE JURASSIC
- 6 LABERGE SERIES AND TANTALUS CONGLOMERATE (conglomerate, sandstone, greywacke, schist, shale, argillite, tuff, coal seams)
- 5 "GOLD SERIES" (granite, porphyry, gneiss, serpentine, magnetite, and actinolite schist)
- CARBONIFEROUS AND TRIASSIC**
- 4 Limestone
- CARBONIFEROUS (?)**
- 3 Limestone and argillite
- CARBONIFEROUS OR OLDER**
- 2 Cherty quartzite, knotted slate, black slate, and limestone
- PRECAMBRIAN (?) PALEOZOIC**
- 1 YUKON GROUP (iron schist, peridotite schist, chlorite schist, quartzite, amphibolite, gneiss, schist, granite, gabbro, and crystalline limestone)
- Geological boundary
- Road and trail
- Glacier
- 1200 Height in feet above sea-level
- PRINCIPAL MINERAL OCCURRENCES**
- x Au, p Gold, placer
- x Au Gold and silver
- x Ag Silver lead
- x Cu Copper
- x C Coal
- x Sb Antimony

SOURCES OF INFORMATION  
Geology from maps of the Geological Survey.  
Geography from maps of the Geological Survey, and the Department of the Interior.  
Map compilation by W. E. Cockfield.



MAP 218 A  
**ATLIN SHEET**  
BRITISH COLUMBIA AND YUKON

Scale, 500,000 or 1 inch to 8 Miles  
Miles  
Kilometres

NOT TO BE TAKEN FROM LIBRARY  
NE PAS SORTIR DE LA BIBLIOTHÈQUE

NOT TO BE TAKEN FROM LIBRARY  
NE PAS SORTIR DE LA BIBLIOTHÈQUE

LIBRARY  
GEOLOGICAL SURVEY  
OF CANADA  
218A