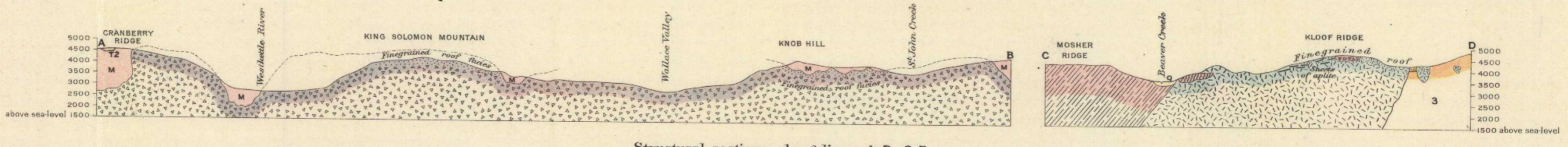


Canada
Department of Mines

HON. L. CODERRE, MINISTER; R. G. McCONNELL, DEPUTY MINISTER.

GEOLOGICAL SURVEY



Structural sections along lines A-B, C-D
Horizontal and vertical scale, 25:500

LEGEND

- QUATERNARY
 - Q River alluvium; glacial drift
- MIOCENE (?)
 - T2 Nipple Mountain series (smaller lava flows and dykes)
- OLIGOCENE
 - T1 Curry Creek series (diabase tufts, conglomerates)
- EOCENE
 - 3 Andite syenite porphyry
 - 2 Beaverdell batholith (quartz monzonite and dykes)
- JURASSIC (?)
 - I Westkettle batholith (quartz diorite and dykes)
 - M Wallace group (metamorphosed igneous rocks, largely lavas and tufts, with sediments of base; basal portion possibly carboniferous)

Symbols

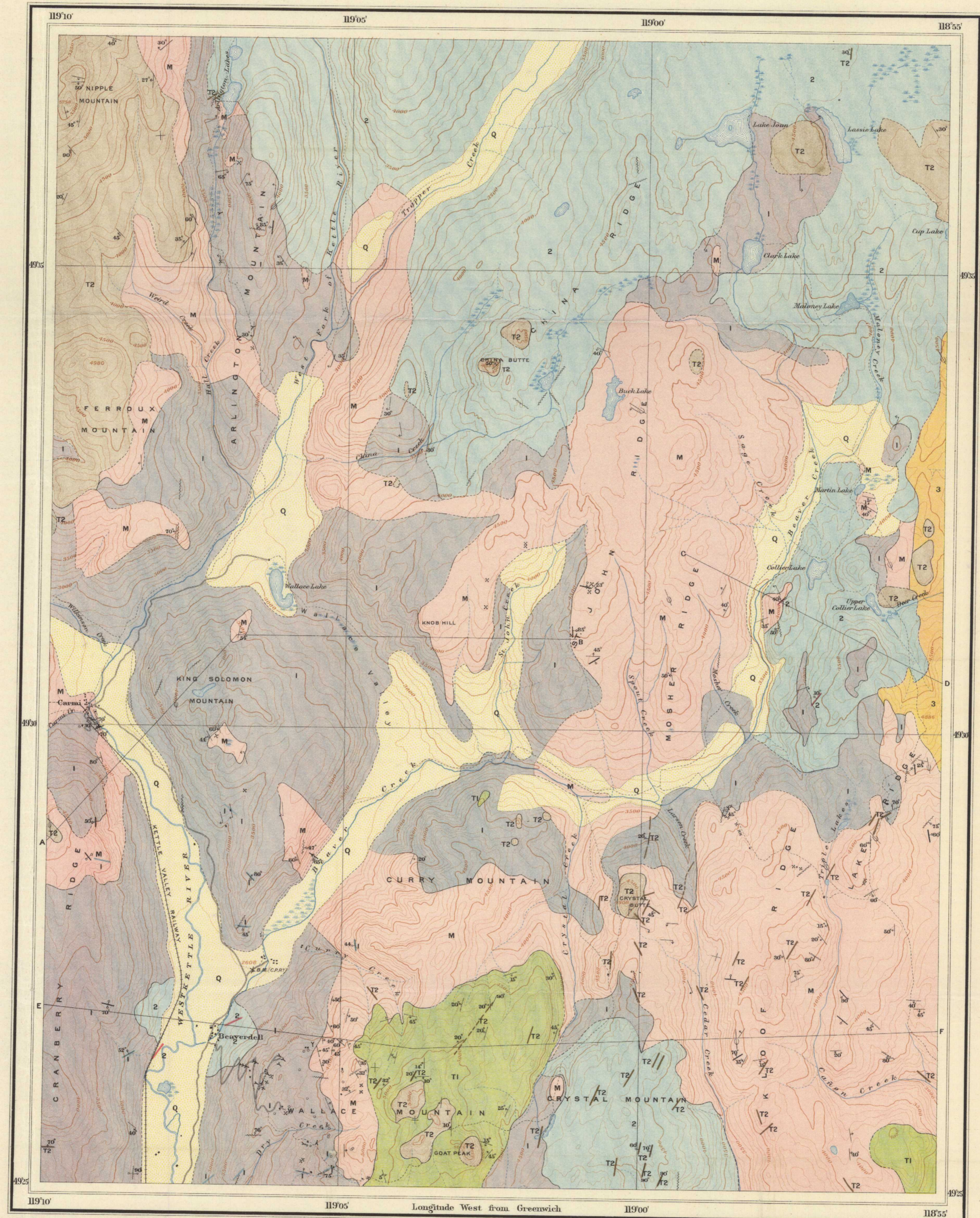
- Geological boundary (closely located)
- Geological boundary (located with a possible error of 500-2500 feet)
- Geological boundary (position assumed)
- Horizontal strata
- Dip and strike of strata and flows
- Dip and strike of dykes, veins, and fractures
- Dip and strike of planes of foliation
- Veins
- Fractures (zones of brecciation; faults)
- Glacial striae

LEGEND

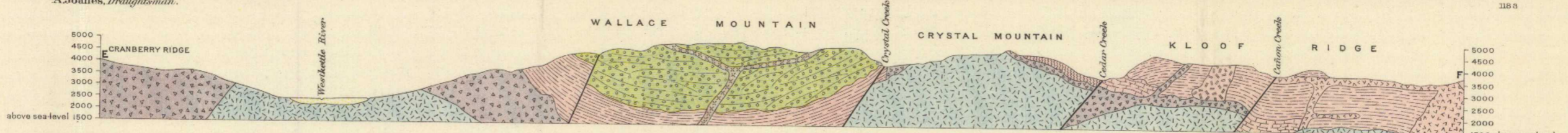
Culture

- Roads and buildings
- Trails
- Bridges
- Post offices
- Shafts
- Tunnels
- Prospects
- Benchmarks
- Water
 - Rivers and lakes
 - Streams, flow disappearing in places
 - Watercourses with intermittent flow
 - Marshes
- Relief
 - Contours (showing land forms and elevations above sea level; interval, 50 feet)
 - Figures showing heights in feet above sea level

Geographical position subject to revision.
Magnetic declination about 24° East.
Determination of contours based on elevation of C.T.S. bench mark.



Geological Geographer and Chief Draughtsman.
A. Jones, Draughtsman.

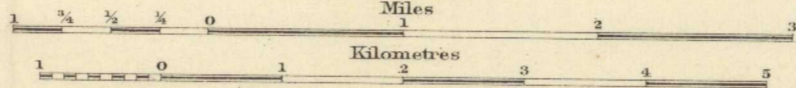


Structural section along line E-F
Horizontal and vertical scale, 25:500

MAP 37A
(Issued 1915)

BEAVERDELL
YALE DISTRICT
BRITISH COLUMBIA

Scale, 62,500



Note: For practical purposes assume
1 MILE TO 1 INCH



GEOLOGY
L. REINECKE, 1911.
TOPOGRAPHY
L. REINECKE, (IN CHARGE) 1909, 1910.

NOT TO BE TAKEN FROM LIBRARY
NE PAS PRENDRE DE LA BIBLIOTHÈQUE

Vertical file
To accompany Memoir by L. Reinecke

37A