

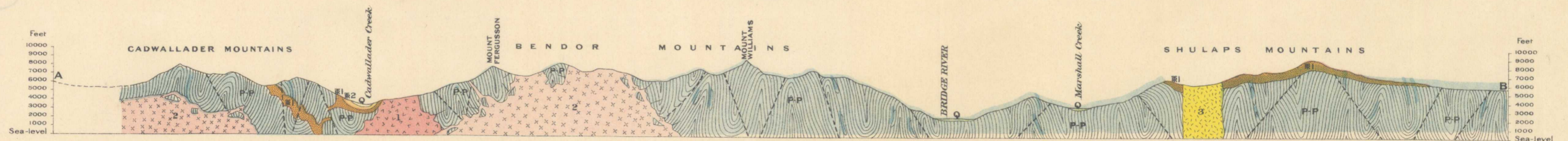
Canada  
Department of Mines

HON. CHARLES STEWART, MINISTER; CHARLES CAMSELL, DEPUTY MINISTER.

GEOLOGICAL SURVEY

W. H. COLLINS, DIRECTOR.

Issued 1922



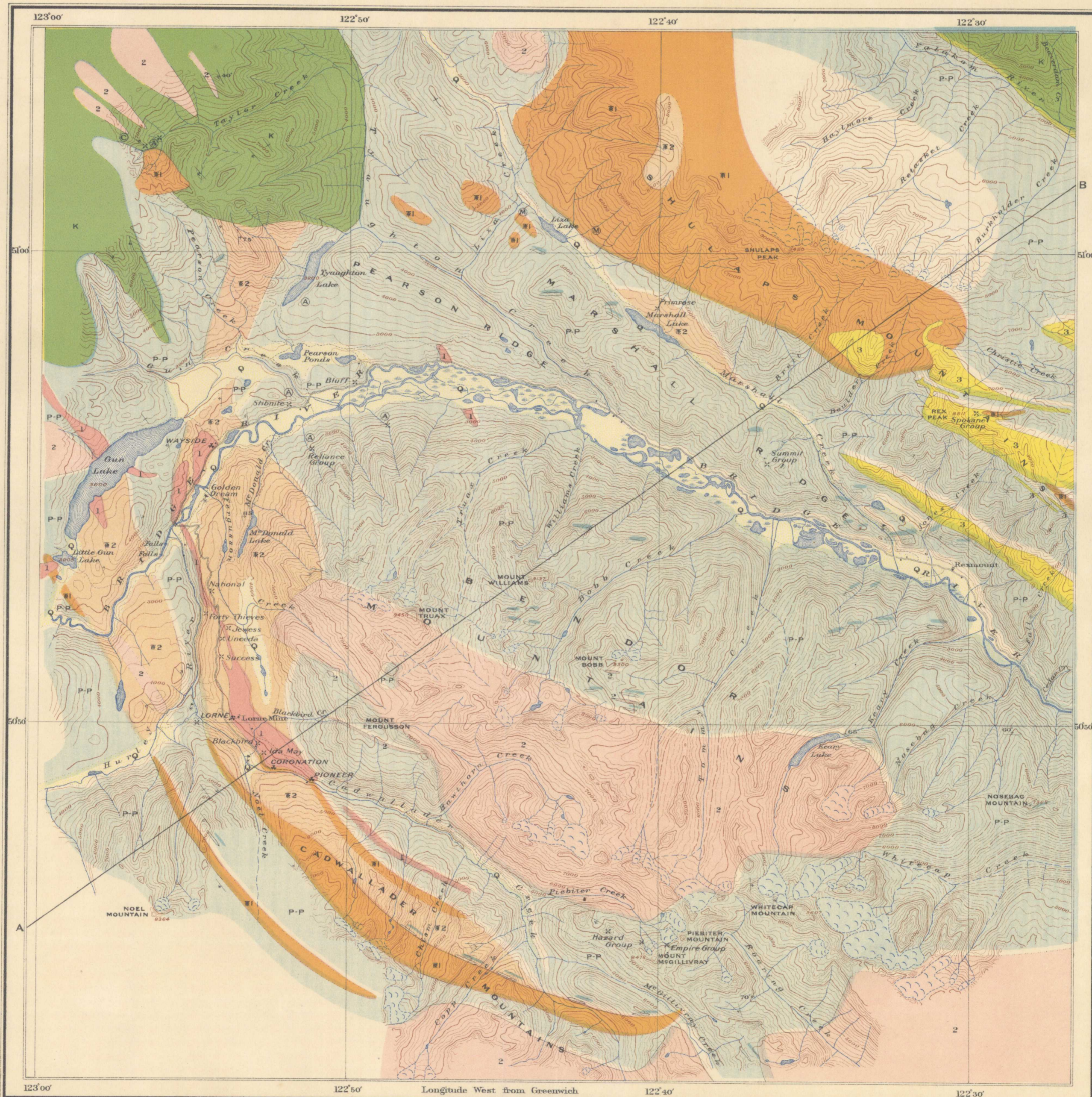
Structural section along line A B  
Scale, horizontal and vertical, 1:25,000

**LEGEND**

TERTIARY QUATERNARY	RECENT	Q	Fluvio-glacial deposits
	OLIGOCENE?	3	Reasmont porphyry underlain by remnants of sediments containing lignite
	POST LOWER CRETACEOUS	2	Bendor butolith (quartz diorite)
MESOZOIC	LOWER CRETACEOUS	K	Eldorado series
	UPPER JURASSIC	1	Augite-diorite stock
	UPPER TRIASSIC	2	Limestone lenses
PALAEOZOIC	TRIASSIC?	1	Cadwallader series
	PENNSYLVANIAN	1	Shulaps volcanics serpentine
	PERMIAN	p-p	Limestone lenses

**Symbols**

- Geological boundary (defined)
- Geological boundary (assumed)
- Dip and strike
- Vertical strata
- Glacial striae
- Chromite
- Magnetite
- Antimony
- Placer claims
- Prospects



**LEGEND**

**Culture**

- Roads and buildings
- Trails
- Bridges
- Post Offices
- Mines

**Water**

- Rivers and lakes
- Streams (shown approximately)
- Glaciers
- Marshes

**Relief**

- Contours (showing land forms and elevations above sea level. Interval 200 Feet)
- Contours (not well determined)
- Figures (showing heights in feet above sea level)

Geographical position subject to revision  
Approximate magnetic declination, 26° 30' East

C. O. Senecal, Geographer and Chief Draughtsman.  
A. Beudwood and A. Jones, Draughtsmen.

Publication No 1922

**BRIDGE RIVER**

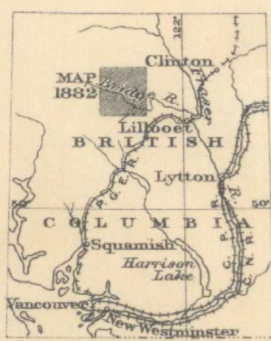
(BETWEEN REXMOUNT AND GUN LAKE)

LILLOOET DISTRICT  
BRITISH COLUMBIA

GEOLOGY  
Geology by C. W. Drysdale, 1915, and W. S. M. Cain, 1919.  
TOPOGRAPHY  
W. H. Boyd, Chief Topographer.  
Surveys and topography by W. E. Lawson, 1912,  
and E. E. Fveinad, 1913.

Scale 1:25,000

Note. For practical purposes assume  
2 MILES TO 1 INCH



Scale, 100 Miles to 1 Inch.

Bridge River

5.1.2  
A, Geol.

NOT TO BE TAKEN FROM LIBRARY  
NE PAS SORTIR DE LA BIBLIOTHÈQUE

1882