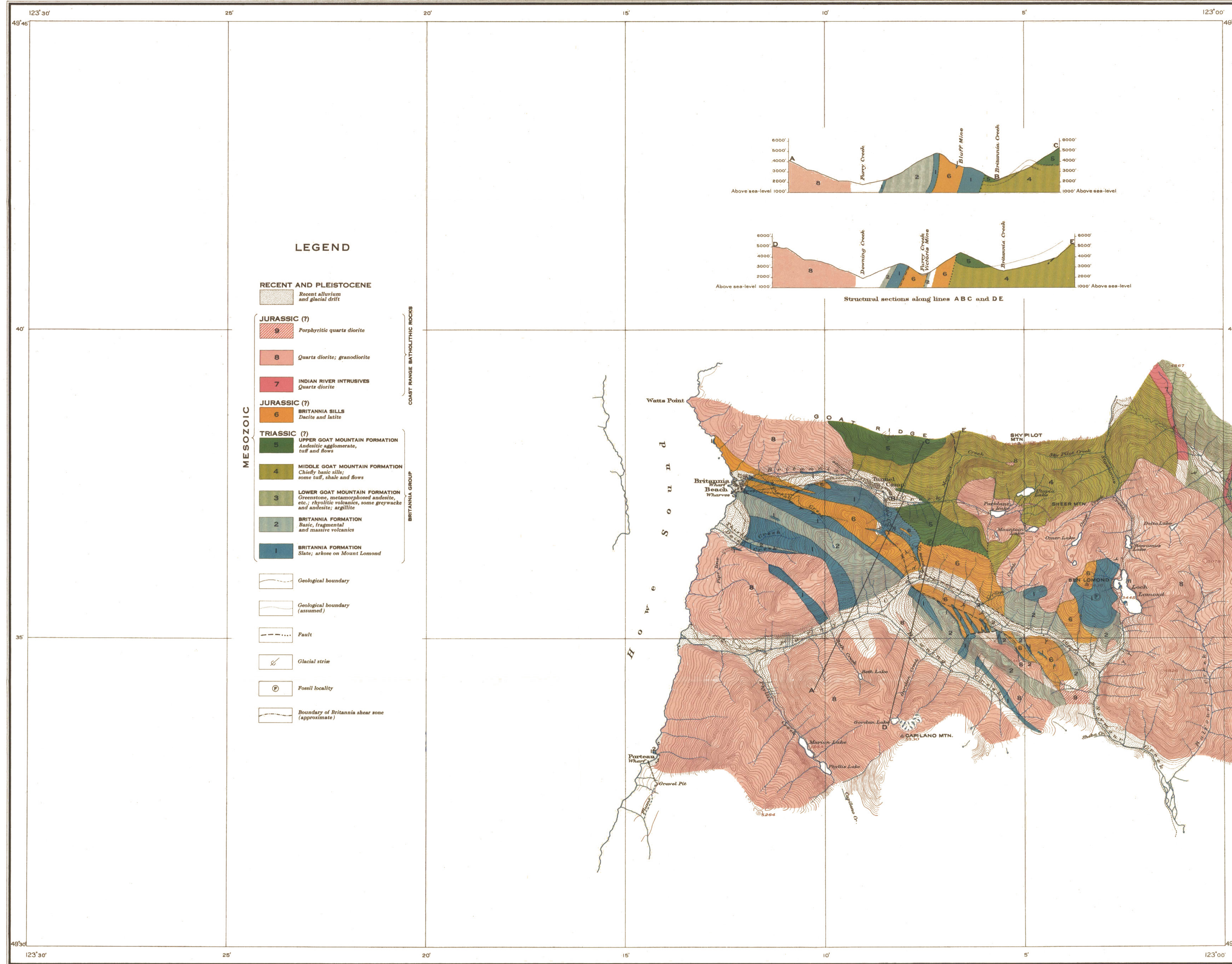


Issued 1929



**LEGEND**

**RECENT AND PLEISTOCENE**

Recent alluvium and glacial drift

**JURASSIC (?)**

9 Porphyritic quartz diorite

8 Quartz diorite; granodiorite

7 INDIAN RIVER INTRUSIVES  
Quartz diorite

**JURASSIC (?)**

6 BRITANNIA SILLS  
Dacite and latite

**TRIASSIC (?)**

5 UPPER GOAT MOUNTAIN FORMATION  
Andesitic agglomerate, tuff and flows

4 MIDDLE GOAT MOUNTAIN FORMATION  
Chiefly basic sills; some tuff, shales and flows

3 LOWER GOAT MOUNTAIN FORMATION  
Greenstone, metamorphosed andesite, etc.; rhyolitic volcanics, some greywacke and sandstone; argillite

2 BRITANNIA FORMATION  
Basic, fragmental and massive volcanics

1 BRITANNIA FORMATION  
Slate; arkose on Mount Lomond

**COAST RANGE BATHOLITHIC ROCKS**

**BRITANNIA GROUP**

Geological boundary

Geological boundary (assumed)

Fault

Glacial stria

Fossil locality

Boundary of Britannia shear zone (approximate)

**LEGEND**

Building

Trail

School

Post office

Mine tunnel

Mine tramway

Aerial tramway

Pipe line in tunnel

Triangulation station

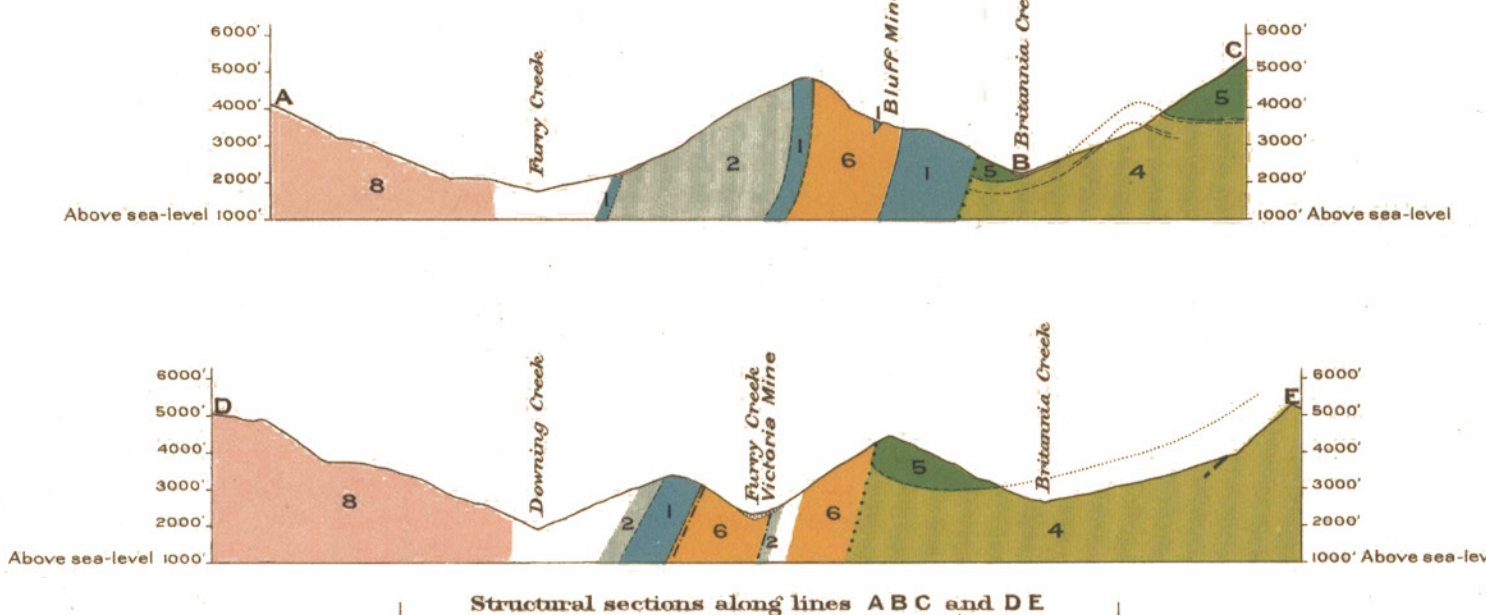
Dam

Glacier

Contour

Height in feet

Elevations referred to Mean sea level

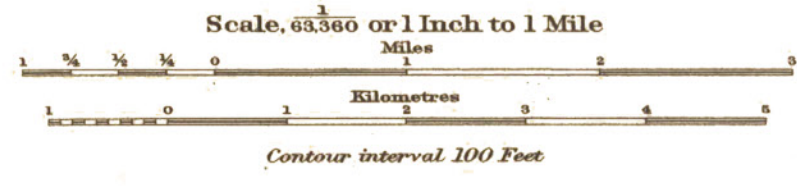


To accompany Memoir by H.T. James

Publication No. 2143



MAP 199 A  
**BRITANNIA BEACH SHEET**  
NEW WESTMINSTER DISTRICT  
BRITISH COLUMBIA



**GEOLOGY**  
Geology by H.T. James, 1926.  
**TOPOGRAPHY**  
W.H. Boyd, Chief Topographical Engineer.  
Survey and topography by K.G. Chiseman, 1921, 1922.  
Triangulation control by S.C. McLean, 1925.

This map has been reprinted from a scanned version of the original map.  
Reproduction par numérisation d'une carte sur papier.