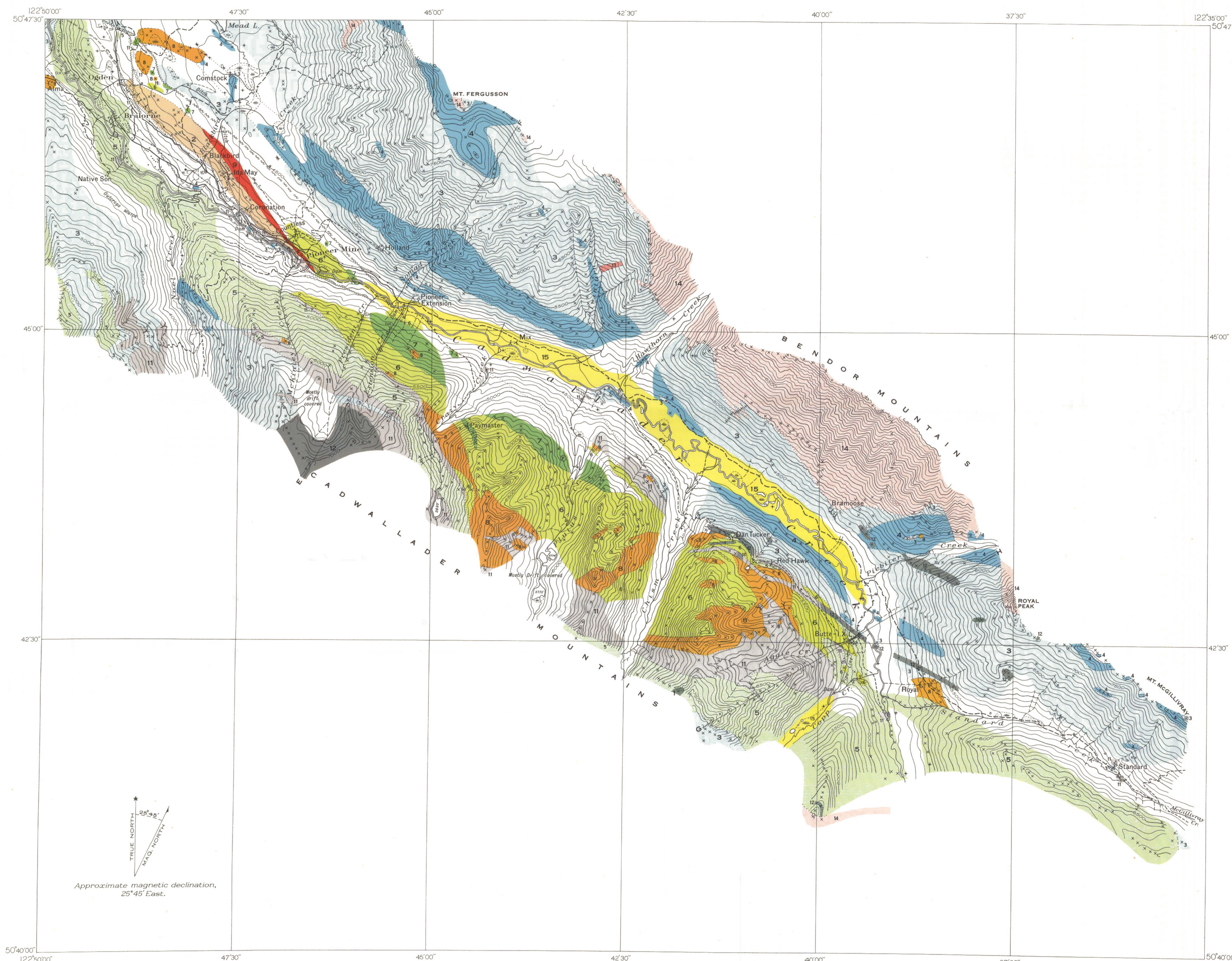


Diagrammatic structure sections along lines E-F, G-H



TRUE NORTH
 MAG. NORTH
 Approximate magnetic declination,
 25°45' East.

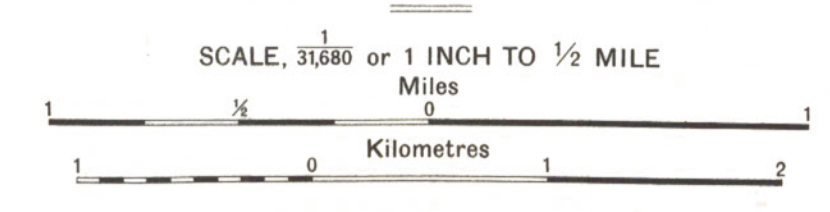
LEGEND

- CENOZOIC**
- MODERN**
- 15 PLEISTOCENE and RECENT: recent alluvium and glacial drift
- MESOZOIC**
- CRETACEOUS OR TERTIARY**
- 14 Hornblende-biotite-quartz diorite; some granite, granodiorite and diorite
 - 13 Porphyritic diorite; feldspar porphyrite, hornblende porphyrite; felsite, aphanite
- JURASSIC (?)**
- 9 BRALORNE INTRUSIVES: Soda granite
 - 12 PRESIDENT INTRUSIVES: Peridotite; some dunite, pyroxenite; serpentinite
 - 8 Gabbro, augite diorite, quartz diorite, meta-diorite
 - 11 Serpentine
- MESOZOIC**
- TRIASSIC AND (OR) JURASSIC**
- 7 HURLEY FORMATION: argillaceous and tuffaceous sediments, in part calcareous; limestone, conglomerate, tuff, lava flows
 - 6 PIONEER FORMATION: andesite, meta-andesite; tuff; breccia
 - 5 NOEL FORMATION: argillaceous and tuffaceous sediments; conglomerate; tuff; breccia; some chert and greenstone
- PALAEZOIC (?)**
- PERMIAN (?)**
- FERGUSON SERIES**
- 4 Basalt, andesite; tuff, breccia; crystalline limestone
 - 3 Mainly thinly interbedded chert and argillite; massive chert; crystalline limestone
 - 2 Areas of augite diorite, etc. (8) in which bodies of soda granite (9) occur
 - 1 Indistinguishable Pioneer: greenstone and Bralorne intrusives: mainly fine-grained diorite and (or) greenstone
- Geological boundary (defined, approximate, assumed).....
- Outcrop where observed x
- Limestone exposure x
- Fault (defined, assumed) - - - - -
- Fossil locality o
- Quarry x
- Prospect x
- Mine tunnel - - - - -
- Shaft o
- Drill-hole o
- Claim post +
- Trench x x x x
- Road and buildings - - - - -
- Road (not well travelled) - - - - -
- Trail - - - - -
- School - - - - -
- Post office - - - - -
- Bridge - - - - -
- Power line - - - - -
- Water tank w.t.
- Intermittent stream and lake - - - - -
- Stream disappearing in place - - - - -
- Marsh - - - - -
- Contours (interval 100 feet) - - - - -
- Elevations; referred to Mean sea-level 1000

Surveyed and reproduced by the Bureau of
 Geology and Topography.
 Geology by C. E. Cairnes, 1934, 1935.



MAP 431A
CADWALLADER CREEK AREA
 (BRIDGE RIVER)
 LILLOET DISTRICT
 BRITISH COLUMBIA



This map has been reprinted from a
 scanned version of the original map.
 Reproduction par numérisation
 d'une carte sur papier.