

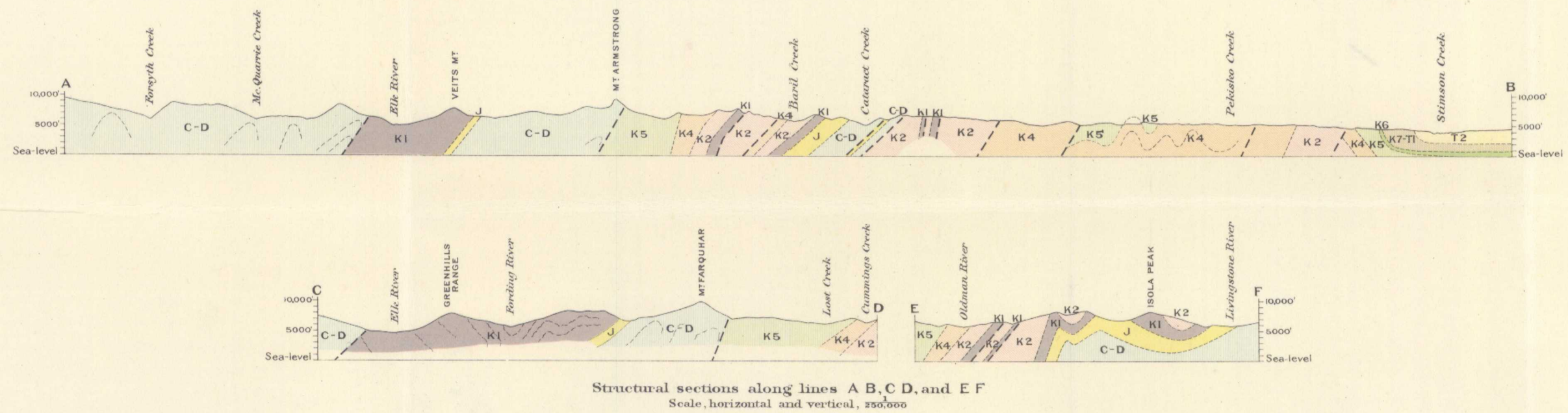
# Canada Department of Mines

HON. CHARLES STEWART, MINISTER; CHARLES CAMSELL, DEPUTY MINISTER.

## GEOLOGICAL SURVEY

W. H. COLLINS, DIRECTOR.

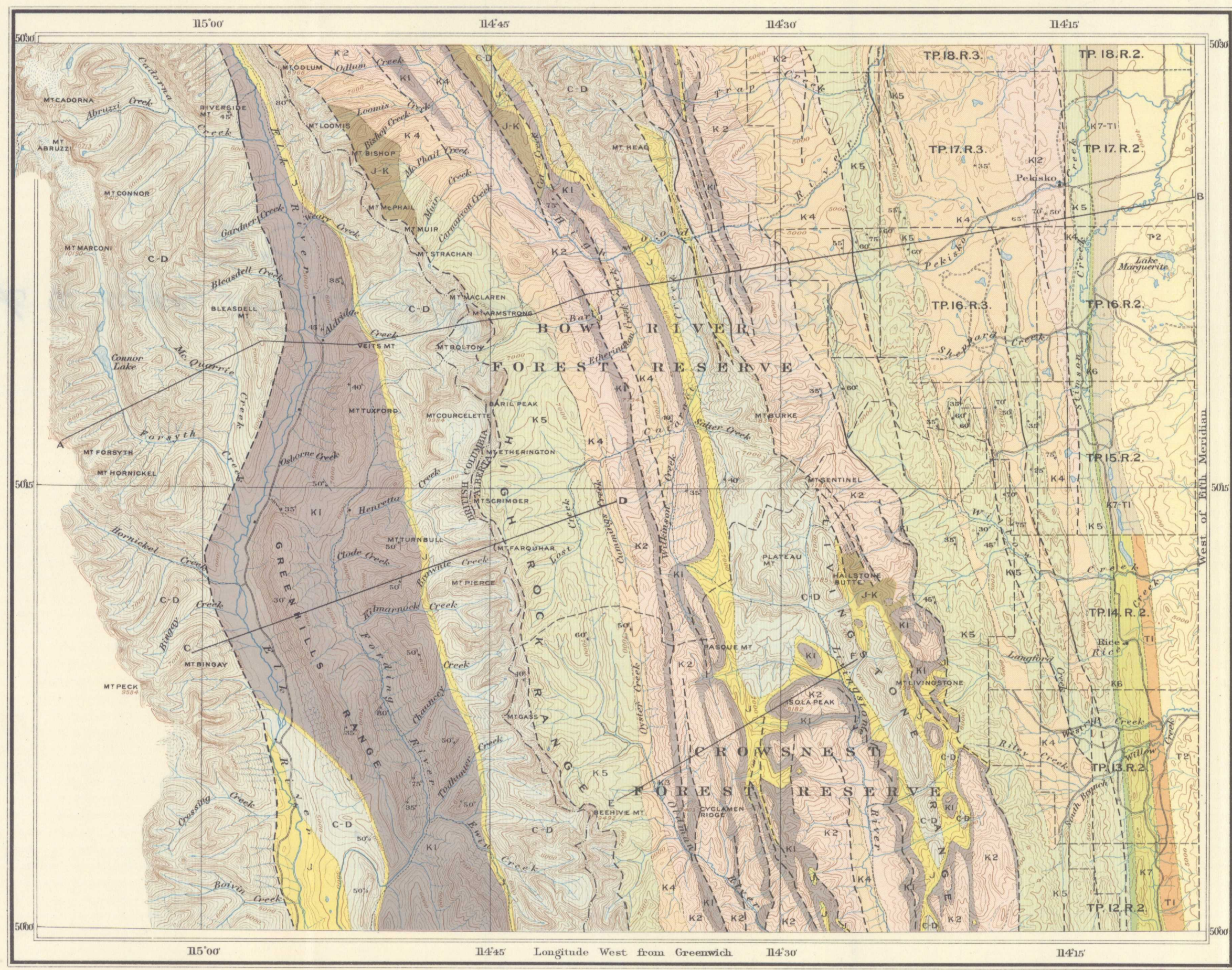
Issued 1924



Structural sections along lines A, B, C, D, and E F  
Scale, horizontal and vertical, 1:250,000

### LEGEND

- TERTIARY**
    - T2 Porcupine Hills formation (sandstone)
    - T1 Willow Creek formation (shale)
    - K7 S. Mary River formation (sandstone)
    - K6 Bearpaw formation (shale)
    - K5 Allison (Belly River) formation (light coloured sandstone and shale)
  - MESOZOIC**
    - K4 Benton formation (dark shale)
    - K3 Crowstair volcanics (tuff and breccia)
    - K2 Blairmore formation (sandstone and sandy shale)
    - K1 Kootenay formation (coal, shale, and sandstone)
  - JURASSIC**
    - J Fernie formation (shale)
  - PAL-EOZOIC**
    - C-D Undivided (chiefly limestone and quartzite)
- Symbols**
- Geological boundary (defined)
  - Geological boundary (approximate)
  - Geological boundary (assumed)
  - Fault (defined)
  - Fault (approximate)
  - Dip and strike
- Other symbols:**
- K7-T1 S. Mary River and Willow Creek formations, undivided
  - J-K Fernie, Kootenay, and other formations broken by folding and faulting



### LEGEND

- Culture**
  - Roads and buildings
  - Roads (poor)
  - Trails
  - Bridges
  - Post Offices
  - Township and Forest Reserve boundaries
- Water**
  - Rivers and lakes
  - Watercourses (with intermittent flow)
  - Glaciers
- Relief**
  - Contours (showing land forms and elevations above sea level) Interval 200 feet
  - Figures (showing heights in feet above sea level)

Approximate magnetic declination 24° East

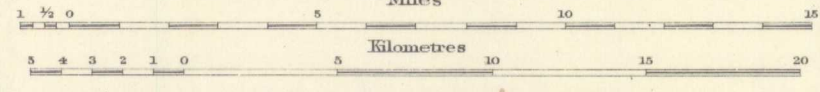
C. O. Sénécal, Geographer and Chief Draughtsman.  
A. Jones, Draughtsman.

Publication No. 1980

## UPPER ELK AND UPPER HIGHWOOD RIVERS

BRITISH COLUMBIA AND ALBERTA

Scale 1:250,000



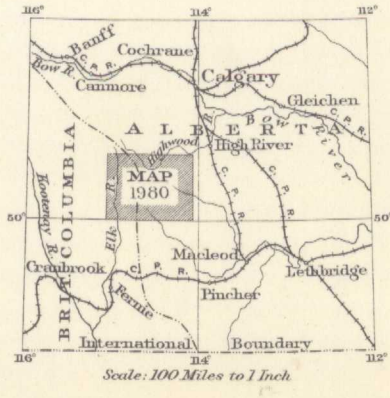
Note. For practical purposes, assume 4 MILES TO 1 INCH

NOT TO BE TAKEN FROM LIBRARY  
NE PAS SORTIR DE LA BIBLIOTHÈQUE

**GEOLOGY**  
Geology by J. S. Stewart, 1915; B. Rose, 1918, 1919,  
and J. R. Marshall, 1920.  
Geological compilation by J. R. Marshall.

**TOPOGRAPHY**  
W. H. Boyd, Chief Topographical Engineer.  
Surveys and topography by D. A. Nichols, 1915, 1916.

Interprovincial Boundary from published maps  
by Interprovincial Boundary Commission.  
Crowstair Forest Reserve from published map  
by Department of the Interior.



To accompany Memoir by J. R. Marshall

1980