

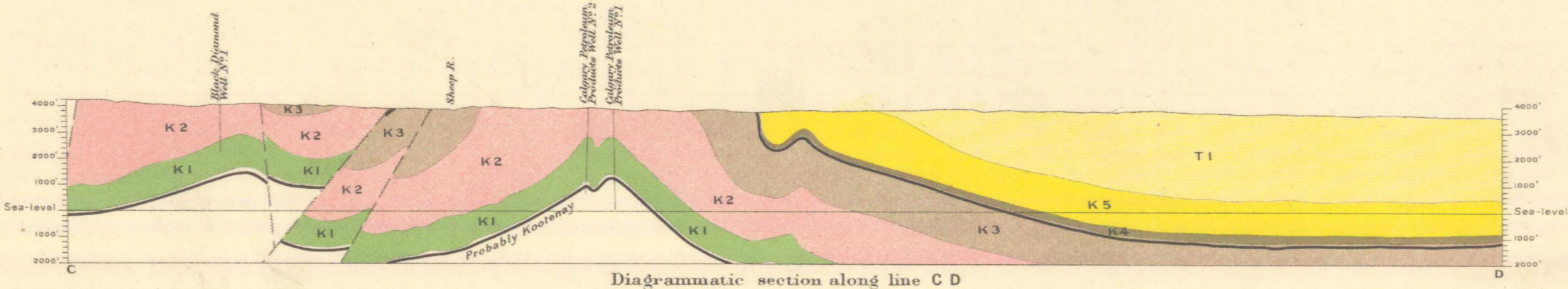
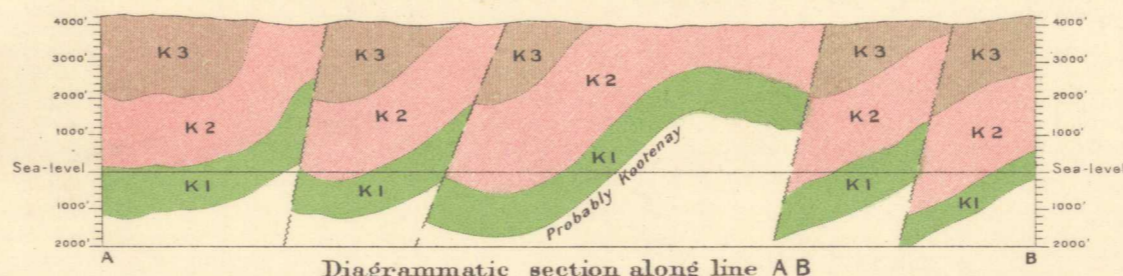
# Canada Department of Mines

HON. MARTIN BURRELL, MINISTER; R.G. McCONNELL, DEPUTY MINISTER.

## GEOLOGICAL SURVEY

WILLIAM McINNES, DIRECTING GEOLOGIST.

Issued 1919



### LEGEND

- TERTIARY**
- T1 Paskapoo
  - K5 Edmonton
- MONTANA**
- K4 Bearpaw (7)
  - K3 Belly River
- COLORADO**
- K2 Benton
- DAKOTA**
- K1 Dakota

### Symbols

- Geological boundary
- Fault
- Dip and strike
- Coal seam
- Anticlinal axis
- Synclinal axis
- Oil well
- Oil and gas well
- Gas well
- Well in progress
- Well abandoned

### List of Wells

1. Macdonald, Sugar Oil Co.
2. Union Pacific Consolidated No. 4 (Casper)
3. Turner Valley Oil Co. (location of derrick only)
4. Petroleum Products Co. (location of derrick only)
5. Marine Oil Co. (location of derrick only)
6. Fortville Oil Co.
7. North Western Pacific No. 2
8. Southern Alberta No. 2
9. Illinois-Alberta Oil Co.
10. Union Pacific Consolidated No. 5 (location of derrick only)
11. Union Oil Co. No. 2
12. Black Diamond Oil Co. No. 2
13. Prudential Oil & Gas Co.
14. Alberta Petroleum Consolidated No. 2
15. Calgary Petroleum Products Co. No. 2
16. Fidelity Oil Co.
17. Union Pacific Consolidated No. 1 (Tribune)
18. Alberta Southern Oil Co.
19. Southern Alberta No. 2
20. Western Pacific Oil Co.
21. Progress Progress Oil Co.
22. Alberta Pacific Oil Co. (Acme well)
23. Acme Oil Co.

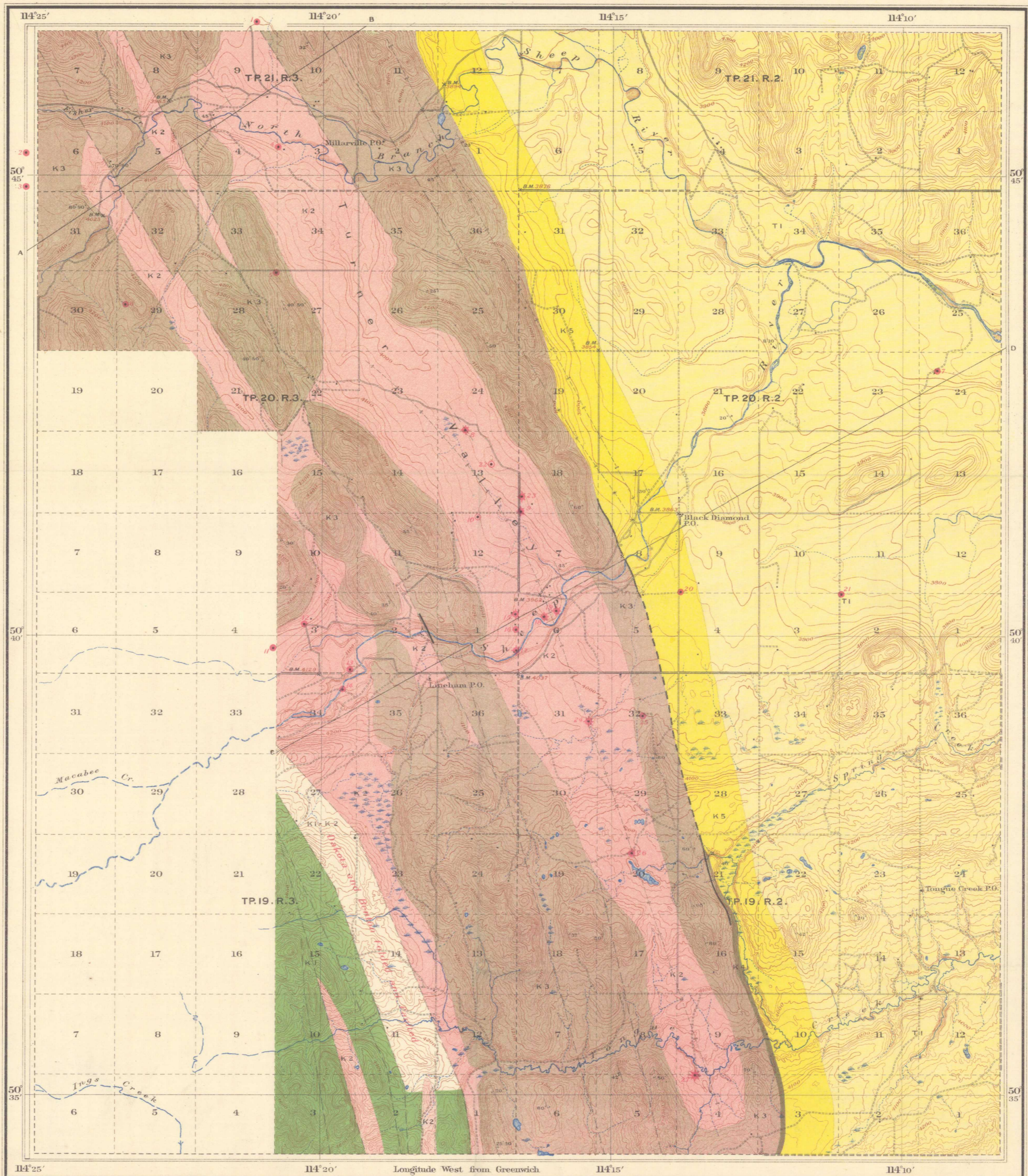
### LEGEND

#### Culture

- Buildings
- Roads along township boundaries
- Roads (well travelled)
- Roads (not well travelled)
- Bridges
- Churches
- Schools
- Post Offices
- Shafts
- Tunnels
- Bore-holes
- Prospects
- Benchmarks
- Township boundaries
- Section lines
- Section numbers
- Water
- Rivers and ponds
- Watercourses (with intermittent flow)
- Springs
- Marshes
- Relief
- Contours (showing land forms and elevations above sea level. Interval 20 feet.)
- Depression contours
- River bars

Approximate magnetic declination, 25° 20' East.

Correction: For elevations above sea level, add 2 feet.



C.S. Sewell, Geographer and Chief Draughtsman.  
A. Braithwaite, Draughtsman.

Publication No. 1724

## SHEEP RIVER

(TOWNSHIPS 19, 20, AND 21, RANGES 2 AND 3, WEST OF FIFTH MERIDIAN)

ALBERTA

GEOLOGY

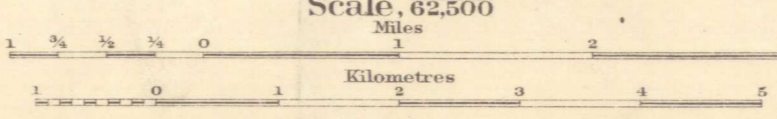
S. E. SLIPPER

1914

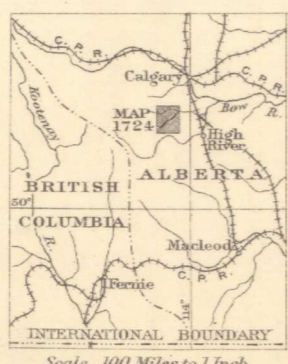
TOPOGRAPHY

E. FREELAND, NORTH HALF  
C. H. FREEMAN, SOUTH HALF

Scale, 62,500



Note: For practical purposes assume  
1 MILE TO 1 INCH



NOT TO BE TAKEN FROM LIBRARY  
NE PAS SORTIR DE LA BIBLIOTHEQUE



1724

Sheep River

5-1-1  
A, Geol.