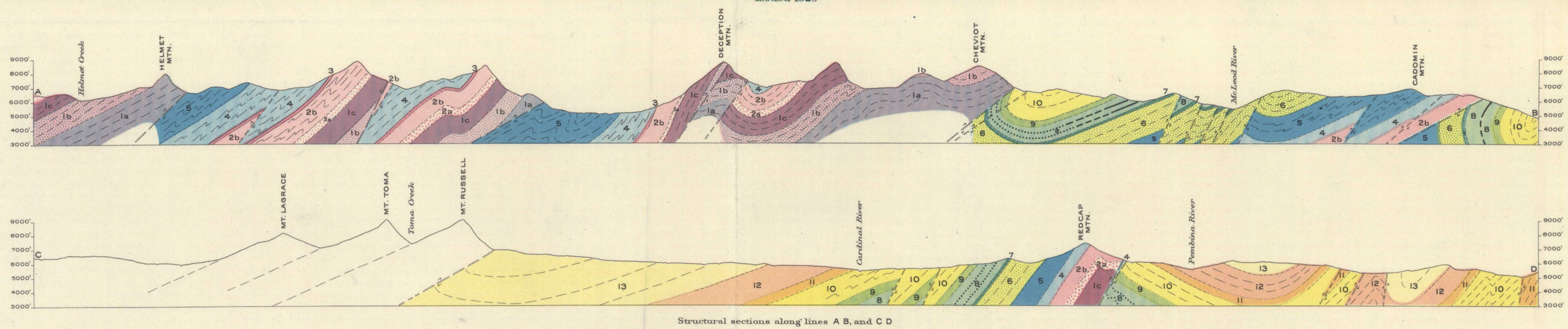


Issued 1929

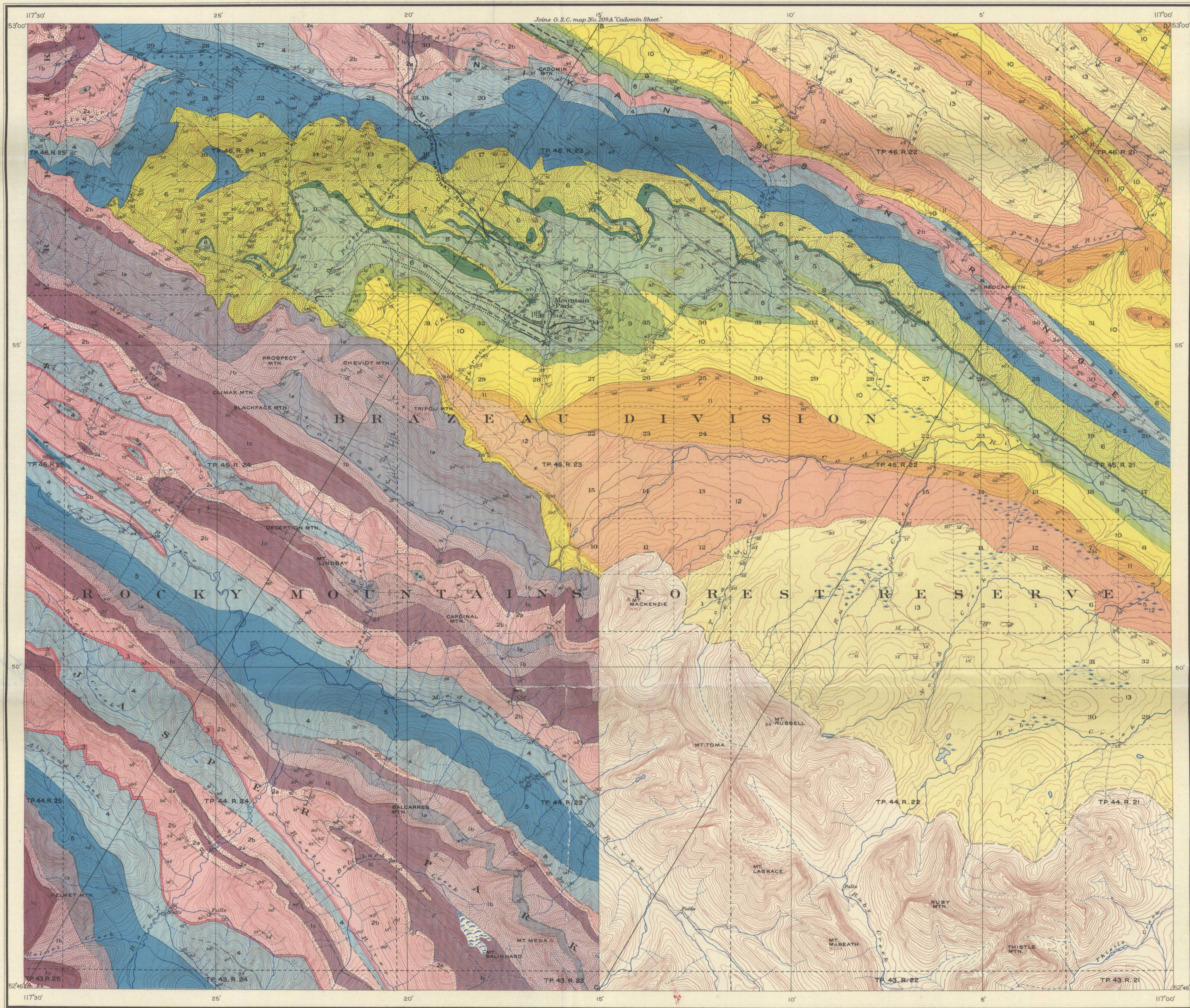


Structural sections along lines A, B, and C D

LEGEND

- CRETACEOUS**
- 13 BRAZEAU FORMATION
Sandstone, shale and conglomerate
 - 12 WAPIABI FORMATION
Shale
 - 11 BIGHORN FORMATION
Sandstone, shale and conglomerate
 - 10 BLACKSTONE FORMATION
Shale and thin sandstone
- LOWER CRETACEOUS**
- 9 MOUNTAIN PARK FORMATION
Sandstone, conglomerate and shale
 - 8 LUSCAR FORMATION
Shale, sandstone and coal
 - 7 CADOMIN CONGLOMERATE
 - 6 NIKANASSIN FORMATION
Shale and sandstone
- JURASSIC**
- 5 FERNIE FORMATION
Shale with basal chert bed
- TRIASSIC**
- 4 SPRAY RIVER FORMATION
Shale, sandstone and limestone
- CARBONIFEROUS**
- 3 PENNSYLVANIAN (?)
ROCKY MOUNTAIN QUARTZITE FORMATION (?)
Quartzite
 - 2b MISSISSIPPIAN (?)
RUNDLE FORMATION
Limestone
 - 2a MISSISSIPPIAN
BANFF FORMATION
Shale
- DEVONIAN**
- 1c Limestone
 - 1b Calcareous shale and argillaceous limestone
 - 1a Limestone and dolomite; shale and quartzite in lower part
- PALEOZOIC**
- Geological boundary
 - Geological boundary (position approximate)
 - Geological boundary (position assumed)
 - Coal seam
 - Coal seam (position approximate)
 - Coal seam (position assumed)
 - Fault
 - Fault (position approximate)
 - Fault (position assumed)
 - Anticlinal axis
 - Synclinal axis
 - Inclined strata
 - Overtured strata
 - Borehole

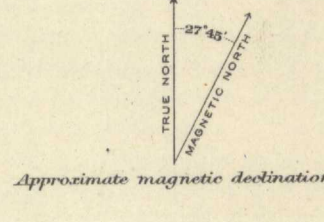
NOTE—Most of the observed outcrops of Cretaceous rocks are indicated by strike and dip symbols, elsewhere these rocks are largely concealed by recent alluvium and glacial drift. In areas underlain by Paleozoic strata, rock outcrops are numerous except in the broad valleys and these are floored with thick deposits of glacial drift.



LEGEND

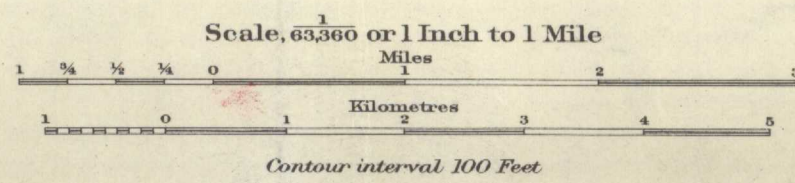
- Roads and buildings
- Trail
- Railway
- Mine tramway
- Cometary
- Mine tunnel
- Prospect
- Triangulation station
- Township boundary
- Section line
- Intermittent stream
- Glacier
- Marsh
- Contours
- Contours (position approximate)
- 9527
- Height in feet
- Sand or gravel bar

Elevations referred to Mean sea-level, based on precise leveling by the Geological Survey of Canada. Geographical position subject to slight revision.



Approximate magnetic declination

MAP 208A
MOUNTAIN PARK SHEET
 (WEST OF FIFTH MERIDIAN)
 ALBERTA



GEOLOGY
 Geology by R. H. MacKay, 1924, 1925.
 TOPOGRAPHY
 W. H. Boyd, Chief Topographical Engineer,
 assisted by J. W. Spence, 1924.
 Triangulation control by R. C. McDonald, 1922.

NOT TO BE TAKEN FROM LIBRARY
 NE PAS SORTIR DE LA BIBLIOTHEQUE

208A