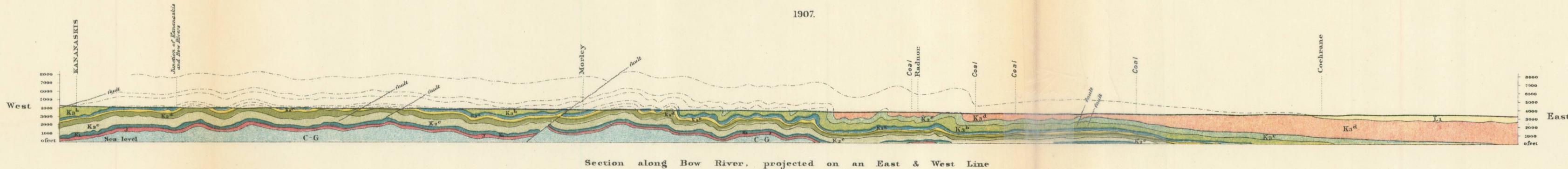


Canada
Department of Mines

HON. W. TEMPLEMAN, MINISTER.
A. P. LOW, DEPUTY MINISTER.

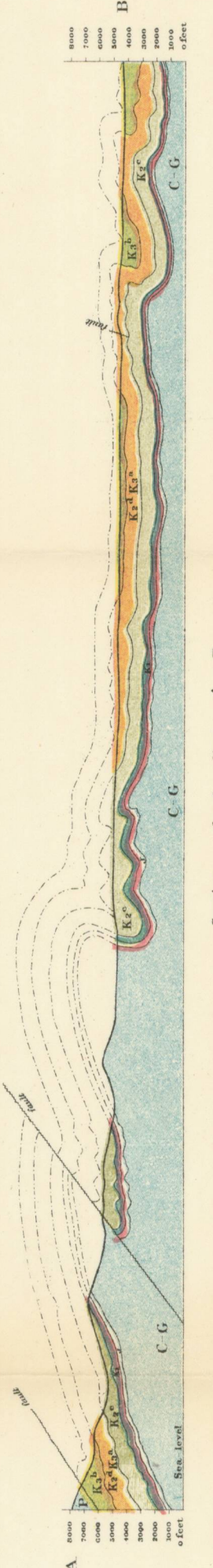
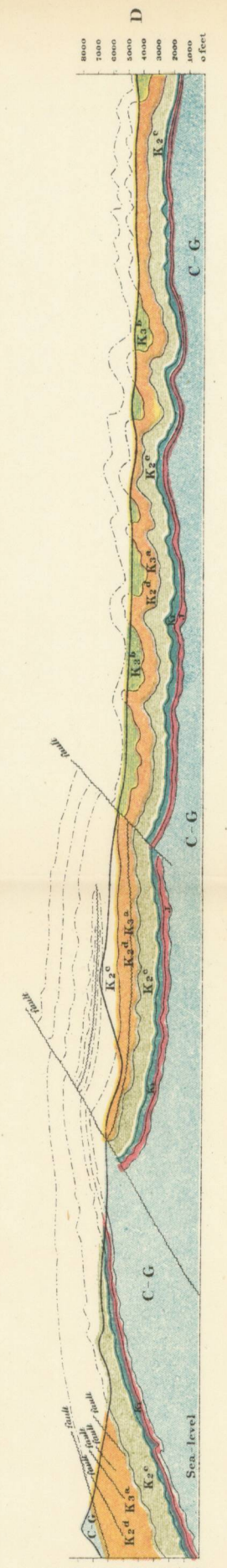
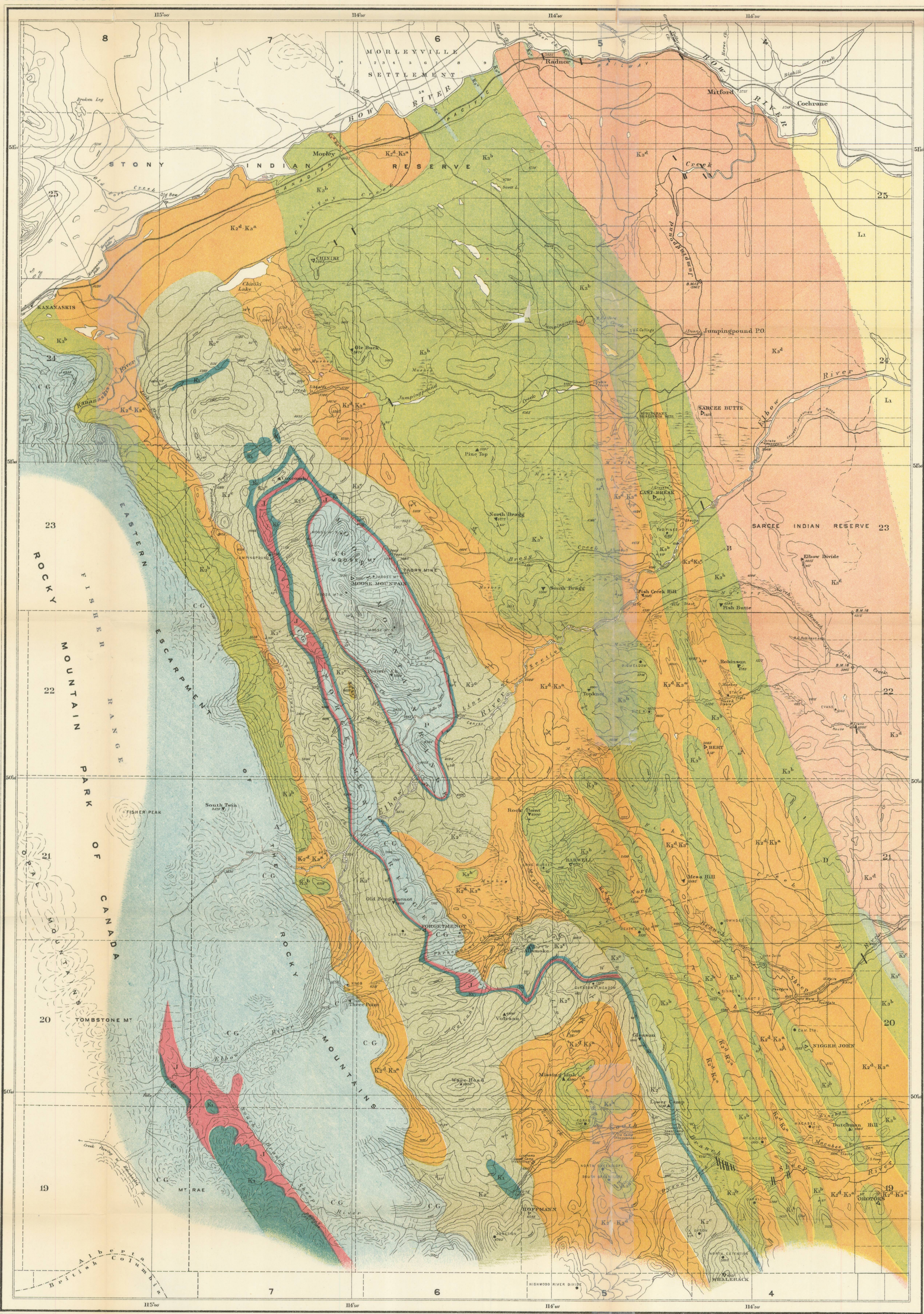
1907.



GEOLOGICAL SURVEY

Index to colours and signs

- Tertiary
 - L₁ Pliocene
- Cretaceous
 - K₁^a Edmonton
 - K₂^a Bearpaw or Horn Forks
 - K₃^a Belly River or Judith River
 - K₄^a Cagliostro or Lower Bear Shales
 - K₅^a Canadian Sandstones
 - K₆^a Benton
 - K₇^a Dakota
 - K₁ Coal Measures, Estacada
- Jurassic
 - J Perin Shales
- Paleozoic
 - C-G Laramie and Ogilvie
- Geological boundaries
 - do do do not traced
 - do do do
 - Fault lines
 - ~ Dip and strike
- ▲ HARWELL Primary Triangulation Stations
- ▲ Robinson Secondary do do
- NICH Camera Station
- ⊙ B.M. Bench Marks
- Wagon Roads, — Trails
- Altitudes in feet above sea level
- 6 Range numbers
- 21 Township numbers
- Contour interval 250 feet



C. O. Semcox, B.A.Sc., Geographer and Chief Draughtman.

Geological and Topographical Map
of the
MOOSE MOUNTAIN REGION
of the
"DISTURBED BELT"
SOUTHERN ALBERTA

to illustrate Report by
D. D. CAIRNES, B.Sc., M.E.
1905

Scale, 2 statute miles to inch - 5000

No 963
Price 10 cents

SOURCES OF INFORMATION
Photographic map of the foothills
region by A. D. Whitlock, B.L.S., 1895-6.
Surveys by D. D. Cairnes, 1895.
Township plans and maps of the Department
of the Interior.
Geology and Synclinal by D. D. Cairnes.

This map has been reprinted from a
scanned version of the original map
Reproduction par numérisation d'une
carte sur papier