

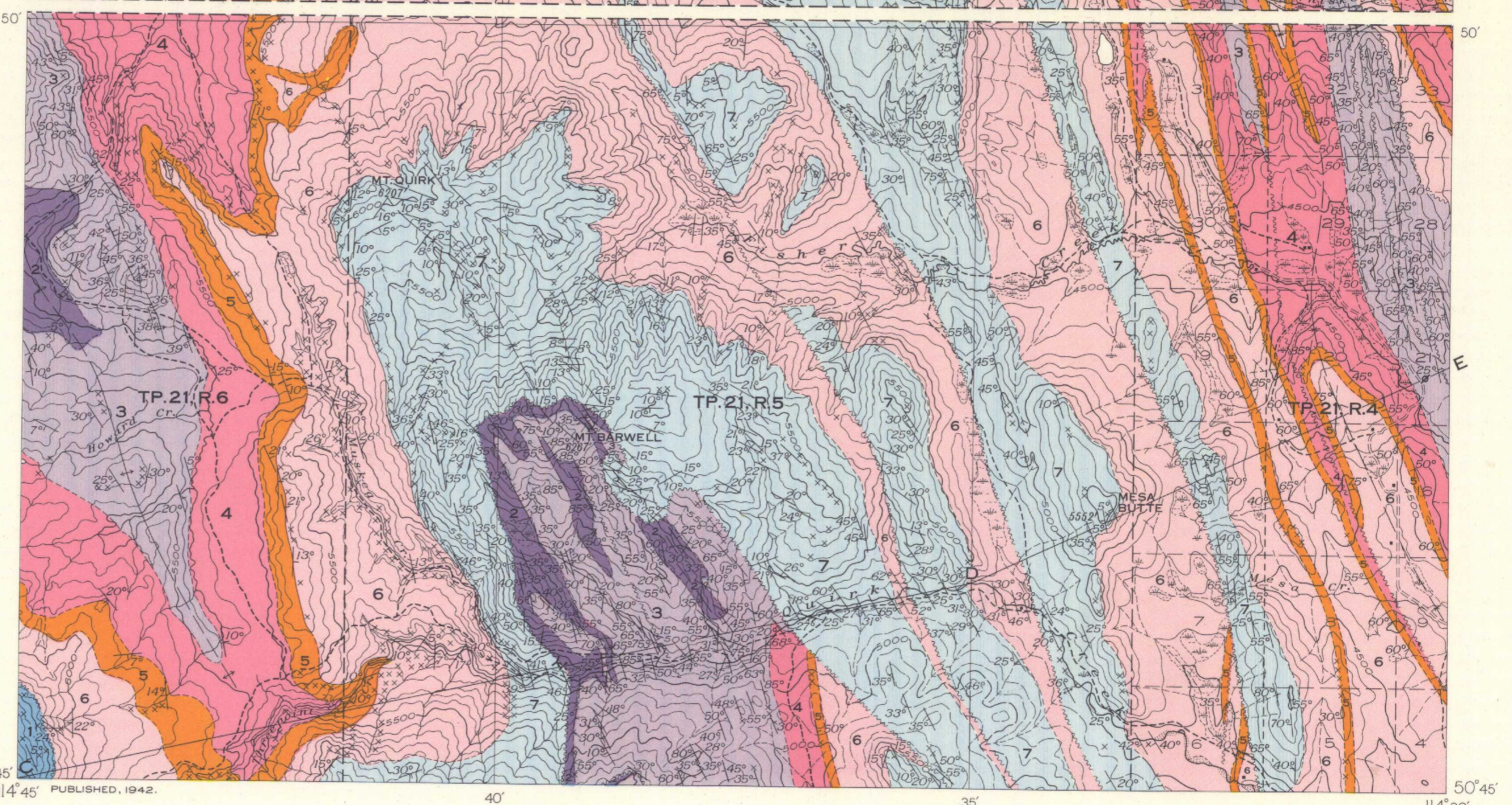
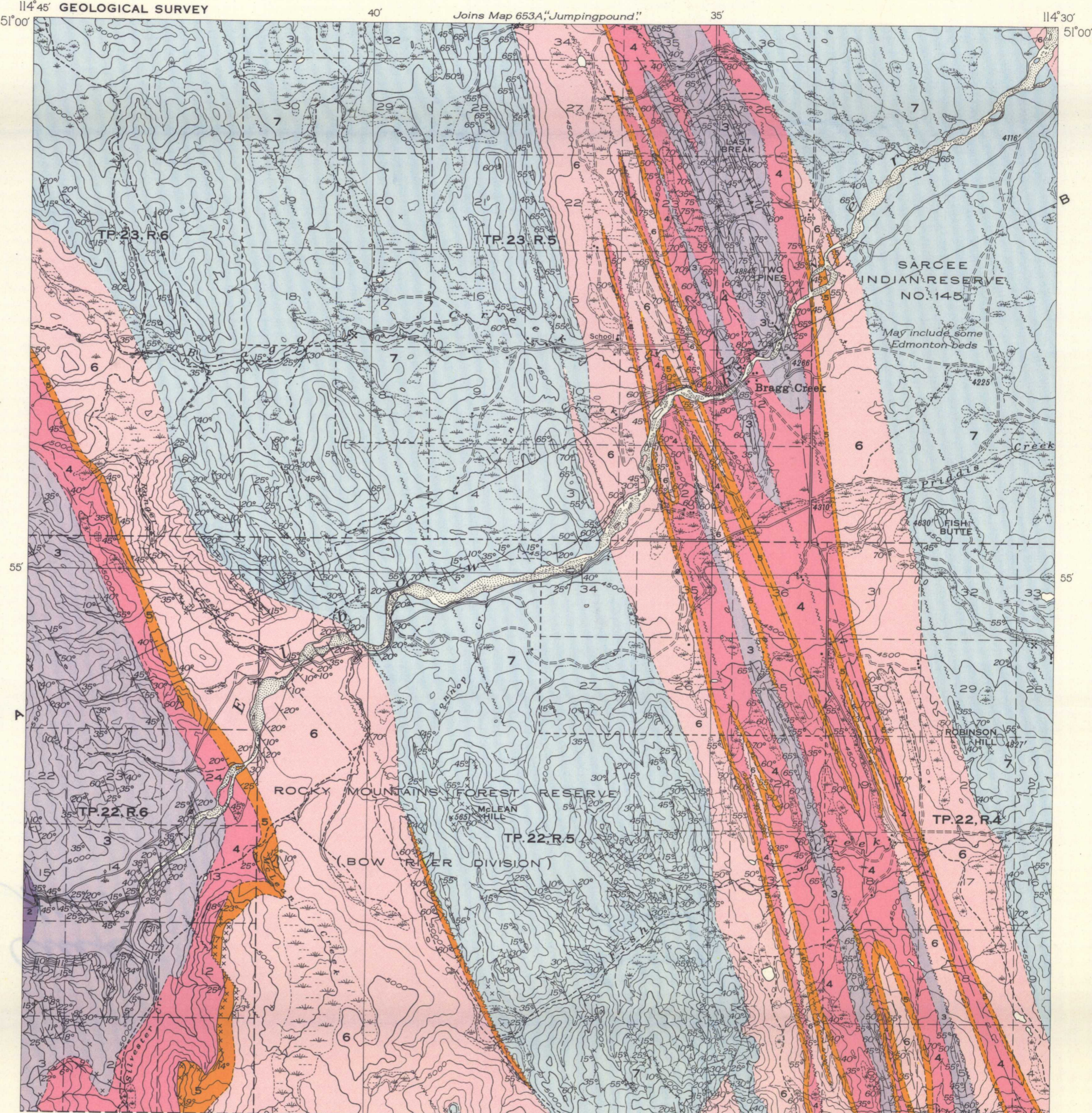
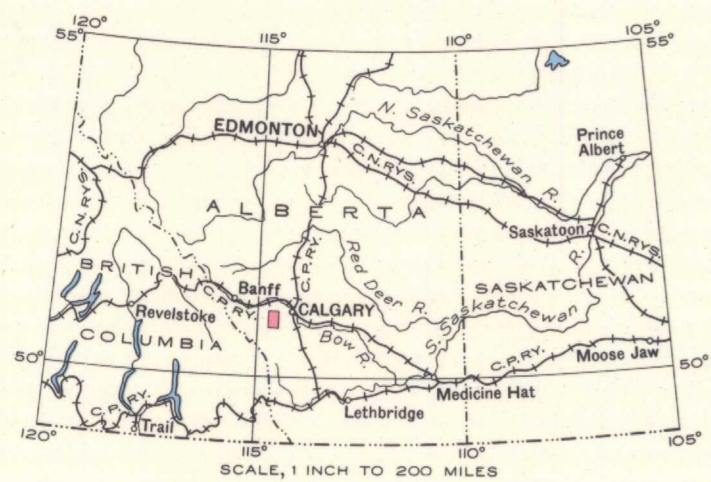
Structure sections along lines A-B, and C-D-E

LEGEND

- MESOZOIC**
- CRETACEOUS**
- UPPER CRETACEOUS**
- 7 BELLY RIVER FORMATION: sandstone, shale, conglomerate, coal
  - 6 UPPER ALBERTA FORMATION: shale, sandy shale
  - 5 CARDIUM FORMATION: sandstone, sandy shale, shale, pebble conglomerate
  - 4 LOWER ALBERTA FORMATION: shale, sandy shale
- LOWER CRETACEOUS**
- 3 BLAIRMORE FORMATION: sandstone, shale, conglomerate
- JURASSIC AND CRETACEOUS**
- 2 FERNIE AND KOOTENAY FORMATIONS: sandstone, carbonaceous shale, coal
- PALAEZOIC**
- CARBONIFEROUS**
- MISSISSIPPIAN AND PENNSYLVANIAN**
- 1 RUNDLE FORMATION: limestone, dolomite

- Rock outcrop .....
  - Bedding (inclined, overturned) .....
  - Fault .....
  - Anticlinal axis .....
  - Synclinal axis .....
  - Coal (prospect, adit) .....
  - Well (abandoned) .....
- Road and buildings .....
  - Road not well travelled .....
  - Road along township boundary .....
  - Trail .....
  - Post Office .....
  - Township boundary .....
  - Section line .....
  - Forest Reserve boundary .....
  - Intermittent stream .....
  - Stream (position approximate) .....
  - Stream (flow disappearing in places) .....
  - Marsh .....
  - Spring .....
  - Contours (interval 100 feet) .....
  - Contours (position approximate) .....
  - Sand and gravel bar .....
  - Height in feet above Mean sea-level .....

Geology by G.S.Hume, 1927, 1932; H.H. Beach, 1939.  
Base-map from surveys and topography by the Topographical Survey, 1926, 1927, and 1937. Cartography by the Drafting and Reproducing Division, 1941.



MAP 654A  
**BRAGG CREEK**  
ALBERTA

Scale, 63,360 or 1 Inch to 1 Mile  
Approximate magnetic declination, 24° East.

NOT TO BE TAKEN FROM LIBRARY  
NE PAS SORTIR DE LA BIBLIOTHÈQUE



654A