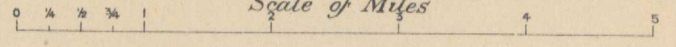


GEOLOGICAL AND NATURAL HISTORY SURVEY OF CANADA
ALFRED R. C. SELWYN C.M.G., LL.D., F.R.S., DIRECTOR.

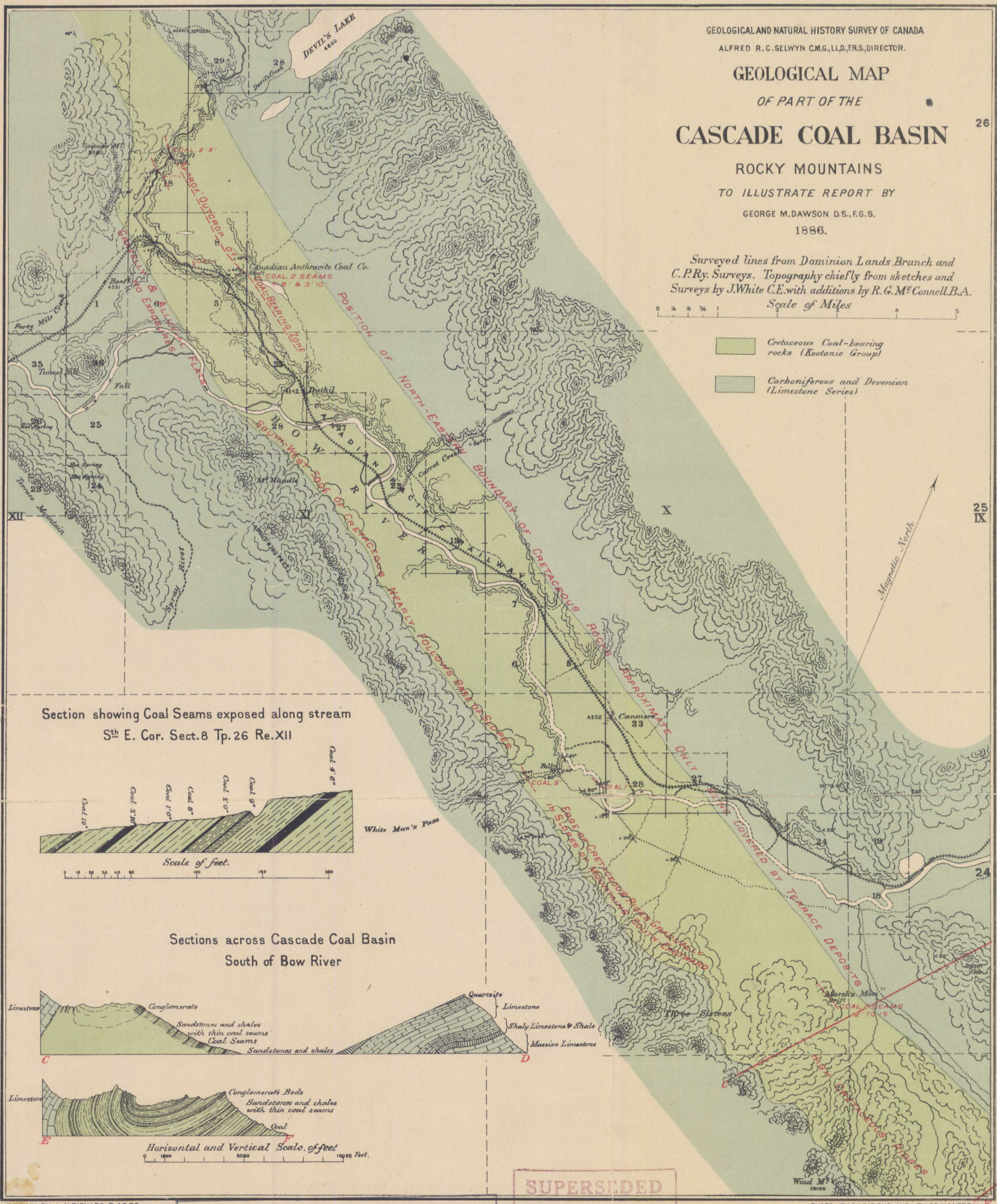
GEOLOGICAL MAP OF PART OF THE CASCADE COAL BASIN

ROCKY MOUNTAINS
TO ILLUSTRATE REPORT BY
GEORGE M. DAWSON D.S., F.G.S.
1886.

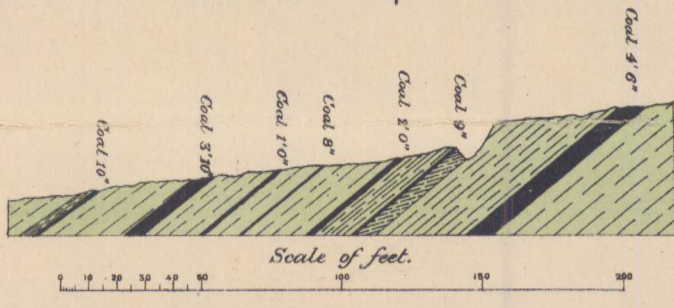
Surveyed lines from Dominion Lands Branch and
C.P.Ry. Surveys. Topography chiefly from sketches and
Surveys by J. White C.E. with additions by R. G. M^cConnell B.A.
Scale of Miles



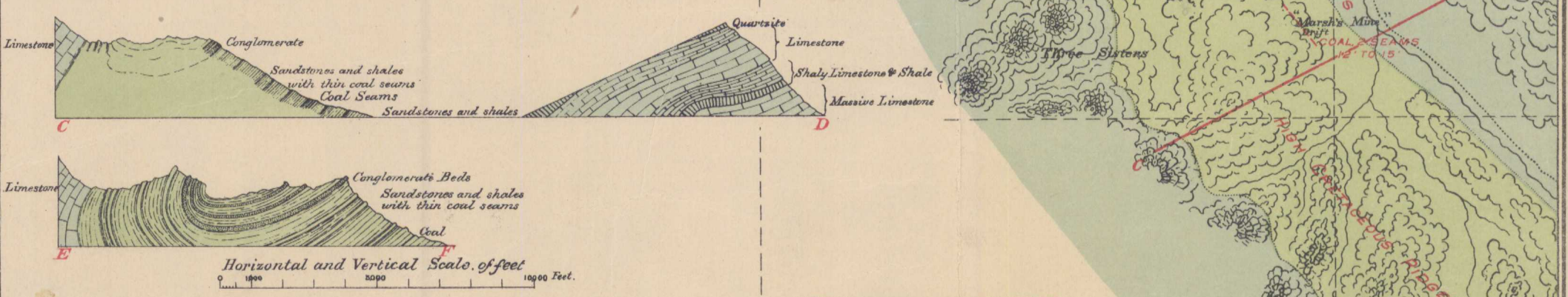
- Cretaceous Coal-bearing rocks (Kootanie Group)
- Carboniferous and Devonian (Limestone Series)



Section showing Coal Seams exposed along stream
Sth E. Cor. Sect. 8 Tp. 26 Re. XII



Sections across Cascade Coal Basin
South of Bow River



DRAWN BY L. N. RICHARD, B. A. P. S. C.

PHOTO LITH. BY THE BURLAND LITH. CO. MONTREAL, B.

FOR REFERENCE
NOT TO BE TAKEN FROM THE MAP LIBRARY

SUPERSEDED
MAY 5 1964
EDITION

Library / Bibliothèque
Geological Survey of Canada
Commission Géologique du Canada
Ottawa, Canada K1A 0G8

NOT TO BE TAKEN FROM LIBRARY
NE PAS SORTIR DE LA BIBLIOTHÈQUE

224

This map has been produced from a scanned version of the original map
Reproduction par numérisation d'une carte sur papier