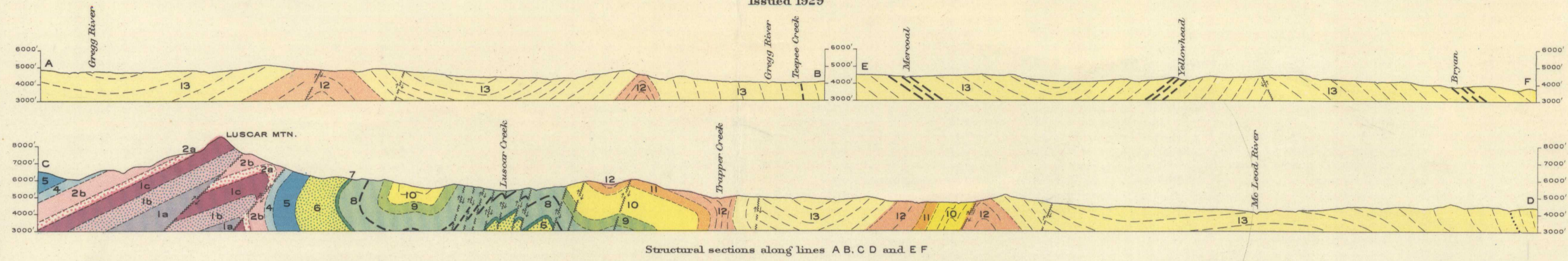


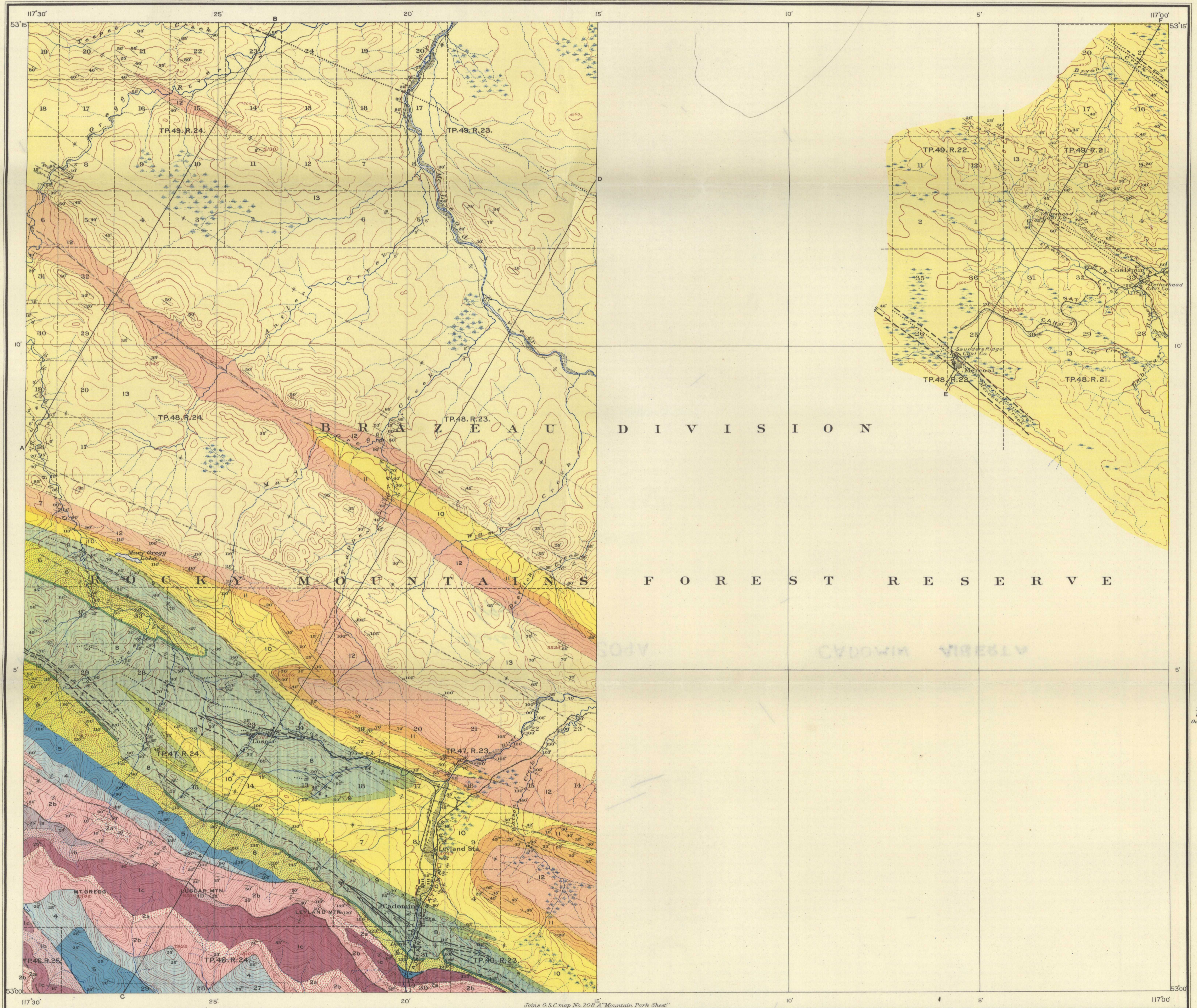
Issued 1929



LEGEND

- CRETACEOUS**
- MONTANA**
- 13 BRAZEAU FORMATION
Sandstone, shale, conglomerate, volcanic ash bed, and coal
- COLORADO**
- 12 WAPAPI FORMATION
Shale
 - 11 BIGHORN FORMATION
Sandstone, shale and conglomerate
 - 10 BLACKSTONE FORMATION
Shale and thin sandstone
- LOWER CRETACEOUS**
- 9 MOUNTAIN PARK FORMATION
Sandstone, conglomerate and shale
 - 8 LUSCAR FORMATION
Shale, sandstone and coal
 - 7 CADOMIN CONGLOMERATE
 - 6 NIKANASSIN FORMATION
Shale and sandstone
- JURASSIC**
- 5 FERNIE FORMATION
Shale with basal chert bed
- TRIASSIC**
- 4 SPRAY RIVER FORMATION
Shale, sandstone and limestone
- CARBONIFEROUS**
- MISSISSIPPIAN (1)**
- 2b RUNDLE FORMATION
Limestone
- MISSISSIPPIAN**
- 2a BANFF FORMATION
Shale
- DEVONIAN**
- 1c Limestone
 - 1b Calcareous shale and argillaceous limestone
 - 1a Limestone and dolomite; shale and quartzite in lower part
- Geological boundary**
- Geological boundary (position approximate)
 - Geological boundary (position assumed)
- Coal seam**
- Coal seam (position approximate)
 - Coal seam (position assumed)
- Fault**
- Fault (position approximate)
 - Fault (position assumed)
- Anticlinal axis**
- Synclinal axis**
- Inclined strata**
- Overturned strata**
- Borehole**

MESOZOIC
PALEOZOIC



LEGEND

- Buildings
- Road
- Trail
- Railway
- Post office
- Mine tunnel
- Prospect
- Township boundary
- Section line
- Intermittent stream
- Marsh
- Contours
- Height in feet
- Sand or gravel bar

Elevations referred to Mean sea-level, based on precise leveling by the Geodetic Survey of Canada. Geographical position subject to slight revision.

Approximate magnetic declination, 1922

NOTE.—Most of the observed outcrops of Cretaceous rocks are indicated by strike and dip symbols, elsewhere these rocks are largely concealed by recent alluvium and glacial drift. In areas underlain by Paleozoic strata, rock outcrops are numerous except in the broad valleys and these are floored with thick deposits of glacial drift.

To accompany Memoir by B. R. MacKay

MAP 209A
CADOMIN SHEET
(WEST OF FIFTH MERIDIAN)
ALBERTA

Scale, 63260 or 1 inch to 1 Mile
Miles
Kilometres

Contour interval, 100 Feet

GEOLOGY
Geology by B. R. MacKay, 1924, 1925, 1926.
TOPOGRAPHY
W. H. Boyd, Chief Topographical Engineer.
Surveys and topography by W. H. Miller, 1922,
and J. W. Spence, 1926.

NOT TO BE TAKEN FROM LIBRARY
NE PAS SORTIR DE LA BIBLIOTHEQUE



209A