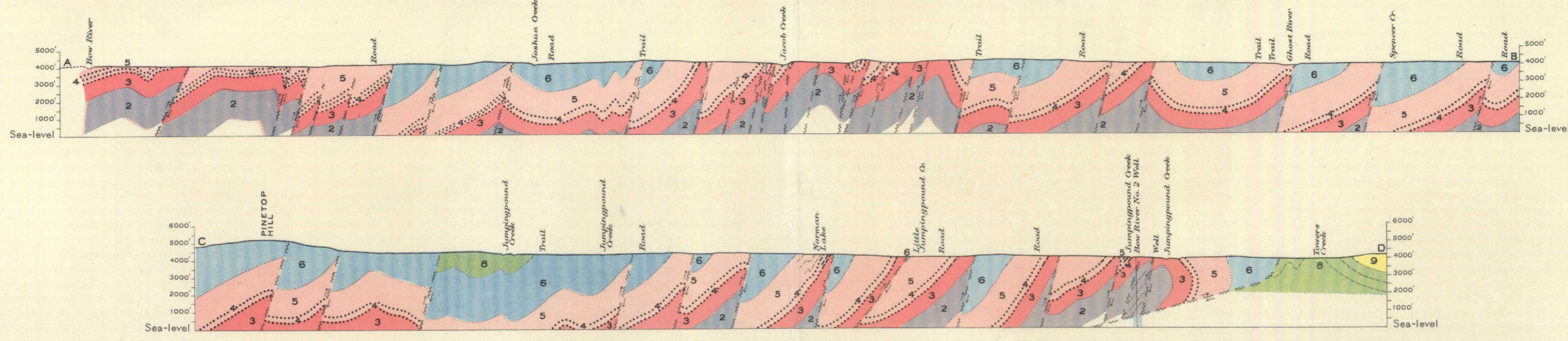
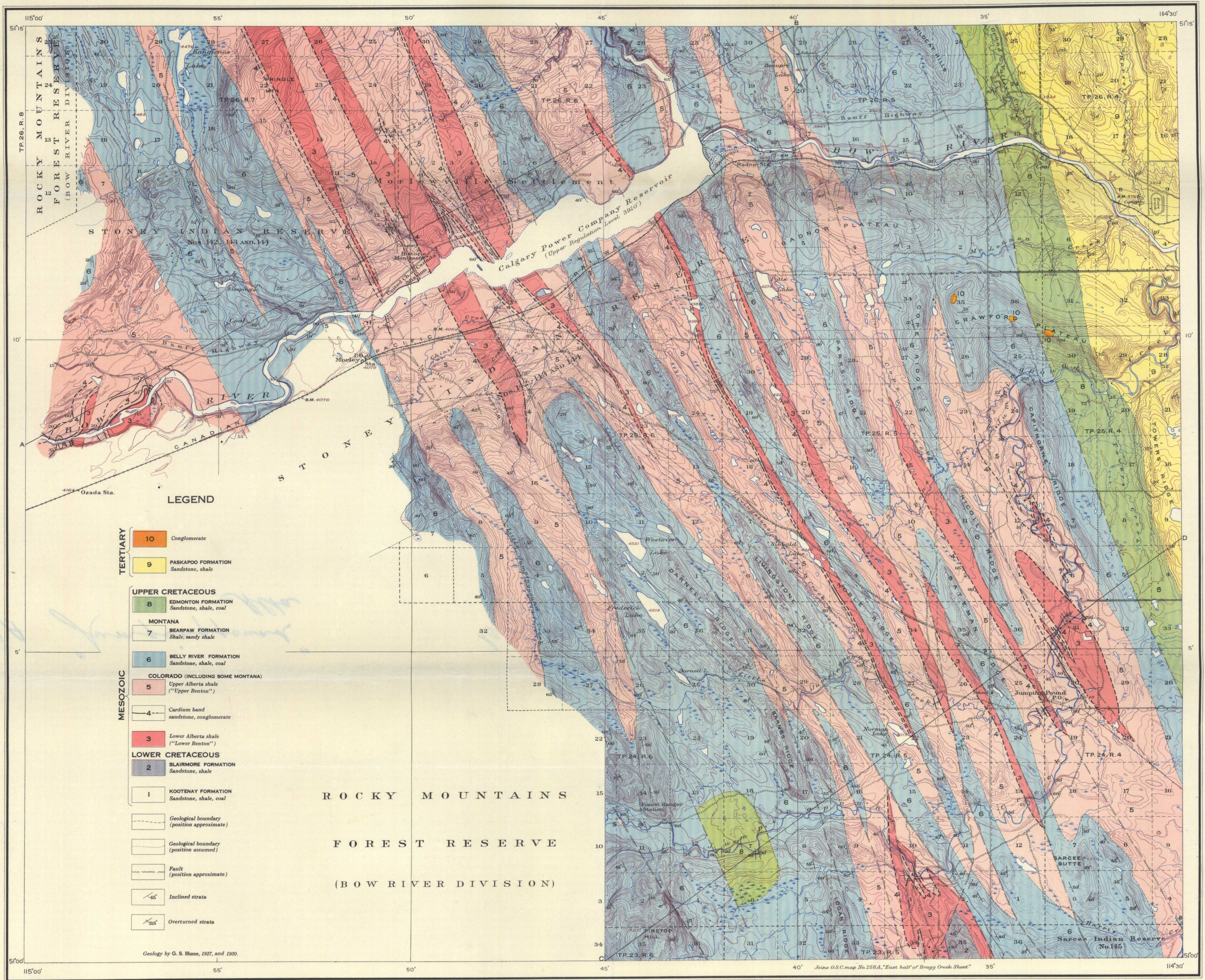


Issued 1932



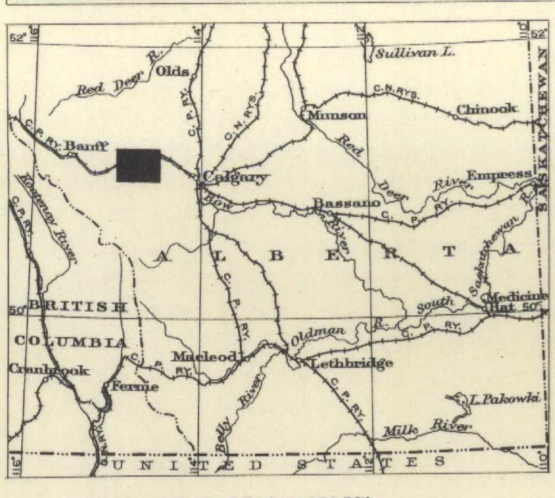
Structural sections along lines A-B and C-D

Note: The complexity and type of structure and the limited amount of available data make it impossible to predict accurately sub-surface conditions.

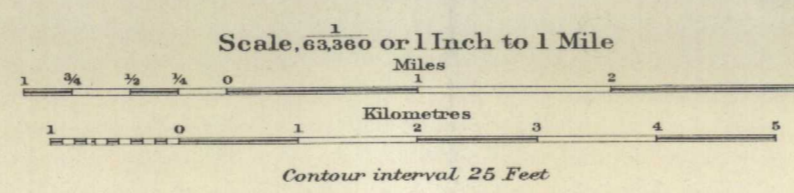


- LEGEND**
- | | |
|-------------------------|---|
| TERTIARY | <p>10 Conglomerate</p> <p>9 PASKAPOO FORMATION
Sandstone, shale</p> |
| UPPER CRETACEOUS | <p>8 EDMONTON FORMATION
Sandstone, shale, coal</p> <p>MONTANA</p> <p>7 BEARPAW FORMATION
Shale, sandy shale</p> <p>6 BELLY RIVER FORMATION
Sandstone, shale, coal</p> |
| MESOZOIC | <p>COLORADO (INCLUDING SOME MONTANA)</p> <p>5 Upper Alberta shale
("Upper Benton")</p> <p>4 Cardium band
sandstone, conglomerate</p> <p>3 Lower Alberta shale
("Lower Benton")</p> <p>LOWER CRETACEOUS</p> <p>2 BLAIRMORE FORMATION
Sandstone, shale</p> <p>1 KOOTENAY FORMATION
Sandstone, shale, coal</p> |
- ROCKY MOUNTAINS
FOREST RESERVE
(BOW RIVER DIVISION)
- | | |
|--|---|
| <p>Geological boundary
(position approximate)</p> <p>Geological boundary
(position assumed)</p> <p>Fault
(position approximate)</p> <p>Inclined strata</p> <p>Overtuned strata</p> | <p>Indian Reserve boundary</p> <p>Forest Reserve boundary</p> <p>Bench-mark</p> <p>Intermittent lake and stream</p> <p>Marsh</p> <p>Contours</p> <p>Contours
(position approximate)</p> <p>Depression contour</p> <p>Height in feet</p> |
|--|---|
- Geology by G. S. Hume, 1927, and 1930.

- LEGEND**
- | | |
|--|--|
| <p>Roads and buildings</p> <p>Road not well travelled</p> <p>Road along township boundary</p> <p>Trail</p> <p>Railway</p> <p>Power transmission line</p> <p>Bridge</p> <p>Mine tunnel</p> <p>Prospect</p> <p>Well</p> <p>Shaft</p> <p>Triangulation station</p> <p>Township boundary</p> <p>Section line</p> <p>Indian Reserve boundary</p> <p>Forest Reserve boundary</p> <p>Bench-mark</p> <p>Intermittent lake and stream</p> <p>Marsh</p> <p>Contours</p> <p>Contours
(position approximate)</p> <p>Depression contour</p> <p>Height in feet</p> | <p>Elevations referred to Mean sea level</p> <p>Approximate magnetic declination</p> |
|--|--|
- TOPOGRAPHY
W. H. Boyd, Chief Topographical Engineer.
Survey and topography by D. A. Nichols, 1926, 1927.



MAP 277 A
JUMPINGPOUND SHEET
(WEST OF FIFTH MERIDIAN)
ALBERTA



NOT TO BE TAKEN FROM LIBRARY
NE PAS SORTIR DE LA BIBLIOTHEQUE

277A