

Issued 1935
 (Joins Map 322A "Canmore Area, North Portion")

LEGEND

- CENOZOIC**
- MODERN**
 RECENT AND PLEISTOCENE
 10 Recent alluvium and glacial deposits
 - CRETACEOUS**
 LOWER CRETACEOUS
 9 **BLAIRMORE FORMATION:** sandstone, shaly sandstone, quartzitic sandstone, conglomerate
 - MESOZOIC**
 - 8 **KOOTENAY FORMATION:** sandstone, shaly sandstone, carbonaceous shale, coal
 - JURASSIC**
 7 **FERNIE FORMATION:** shale with thin limestone beds, shale and shaly sandstone with calcareous beds, phosphate
 - TRIASSIC**
 6 **SPRAY RIVER FORMATION:** quartzitic sandstone and shale, arenaceous limestone and dolomite
 - CARBONIFEROUS**
 PENNSYLVANIAN
 5 **ROCKY MOUNTAIN FORMATION:** arenaceous dolomite, quartzite with beds of arenaceous limestone and beds of chert, and phosphatic quartzite
 - MISSISSIPPIAN AND (?) PENNSYLVANIAN**
 4 **RUNDLE FORMATION:** limestone
 - MISSISSIPPIAN**
 3 **BANFF FORMATION:** shale, limestone, argillaceous limestone (does not outcrop on map area)
 - DEVONIAN**
 2 **MINNEWANKA FORMATION:** limestone, dolomite
 - DEVONIAN (?)**
 1 **GHOST RIVER FORMATION:** arenaceous limestone, quartzite, dolomite

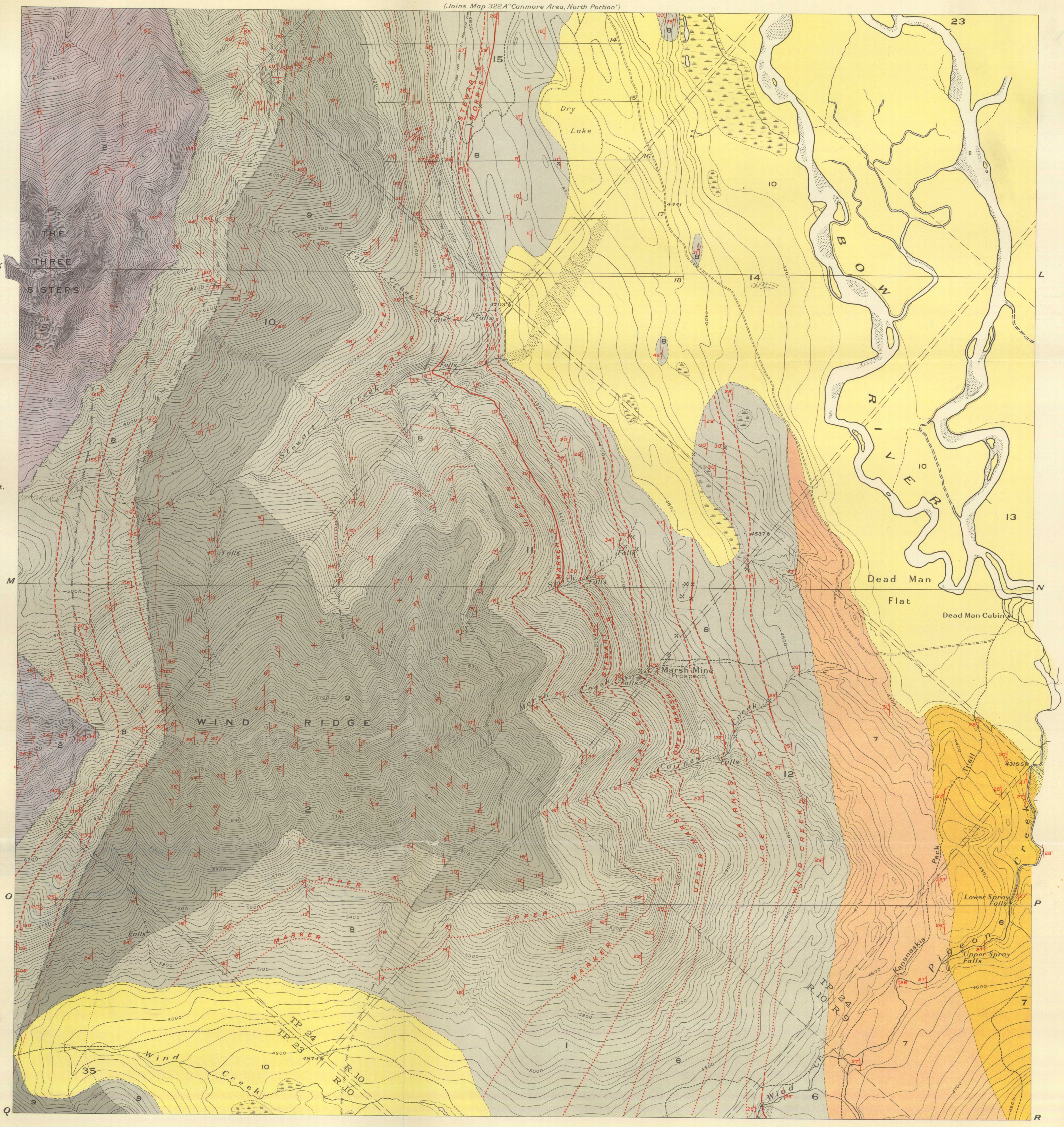
Symbols

- Geological boundary (defined, approximate, assumed)
- Bedding (horizontal, vertical, inclined, overturned)
- Anticlinal axis
- Synclinal axis
- Fault (defined, approximate, assumed)
- Coal seam (defined, approximate, assumed)
- Coal Company's section line
- Coal prospect
- Mine adit

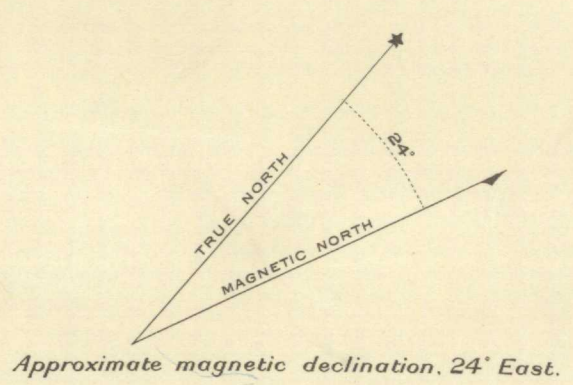
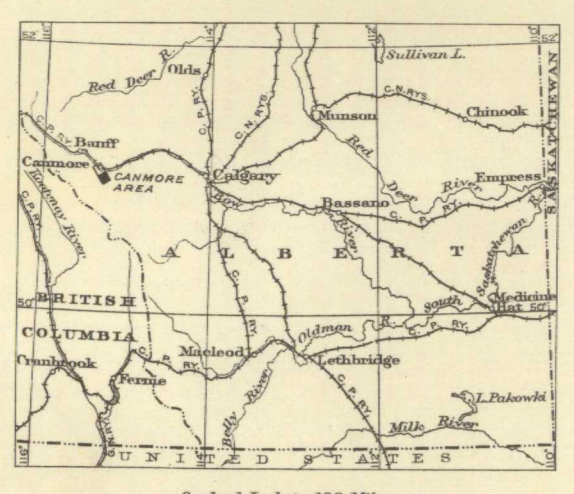
Geology by B. R. McKay, 1934.

SECTIONS

See Publication No. 2385, "Sections supplementing Map 323 A, Canmore Area (South Portion), Alberta". Lines of Sections (K, L, M, N, O, P, Q) are shown extending across map area.

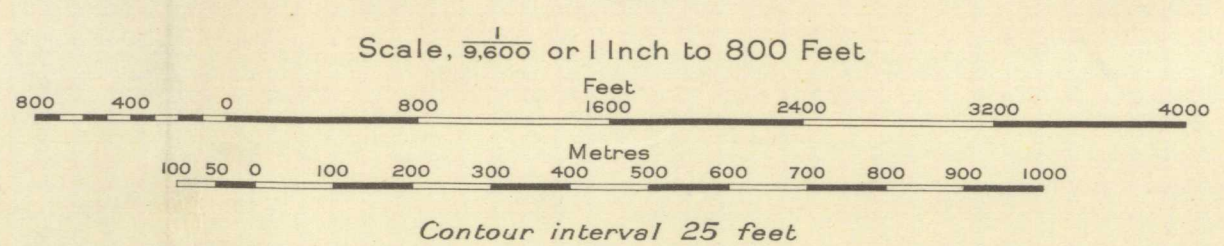


NOT TO BE TAKEN FROM LIBRARY
 NE PAS SORTIR DE LA BIBLIOTHÈQUE



MAP 323 A
 (PUBLICATION No. 2383)
 SOUTH PORTION
CANMORE AREA
 (WEST OF FIFTH MERIDIAN)
 ALBERTA

NOT TO BE TAKEN FROM LIBRARY
 NE PAS SORTIR DE LA BIBLIOTHÈQUE



- Legend**
- Road not well travelled
 - Trail
 - Township section line
 - Section road allowance
 - Section corner post
 - Intermittent stream
 - Spring
 - Sand bar; gravel wash
 - Marsh
 - Contours
 - Depression contour
 - Height in feet above sea-level

Surveys and topography by the Topographical Division, Bureau of Economic Geology, Department of Mines, 1933.

