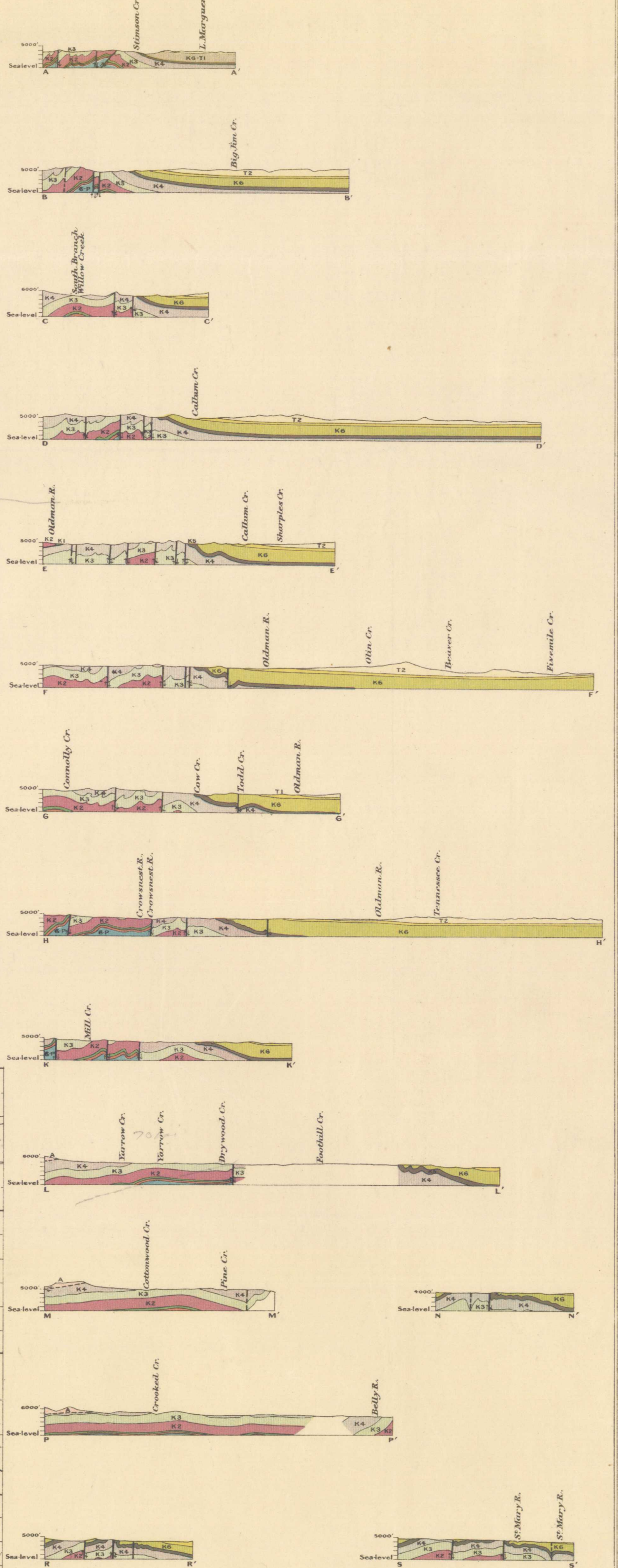


LEGEND

- 92 { 14 - T2 Porcupine Hills sandstone
- 13 - T1 Willow Creek shale
- 12 - K6-T1 S. Mary River and Willow Creek undivided.
- 19 { 12 - K6 S. Mary River sandstone
- 3 - K5 Bearpaw shale
- 10 - K4 Belly River sandstone
- 93 - K3 Cretaceous, undivided
- 78 { 57 - K2 Beaton shale
- 57 - K1 Blainmore sandstone
- 57 - K1 Rookeray coal measures
- omit - J Ferris shale
- omit - 6-P Palaeozoic, undivided
- 1-25 - A Pre-Cambrian, undivided, possibly including Cambrian

Symbols

- Geological boundary defined
- Geological boundary approximate
- Fault defined
- Fault approximate

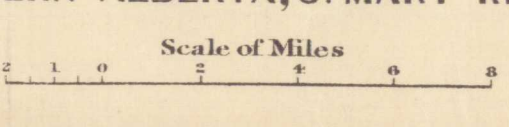


Structure sections along lines AA'-SS'
Horizontal Scale of Miles
Note: The faults, shown in the sections by vertical lines, probably dip west.

C.O. Searles, Geographer and Chief Draughtsman.
A. Readwood, Draughtsman.

Publication No. 1712

THE FOOTHILLS OF SOUTHERN ALBERTA, S. MARY RIVER TO HIGHWOOD RIVER



NOT TO BE TAKEN FROM LIBRARY
NE PAS SORTIR DE LA BIBLIOTHÈQUE

Geology by J.S. Stewart, 1914, 1915, and S.E. Slippy, 1914.

Alberta - Southern

To accompany Memoir by J.S. Stewart.

5.1.1
A. Geol.
This map has been produced from a scanned version of the original map
Reproduction par numérisation d'une carte sur papier