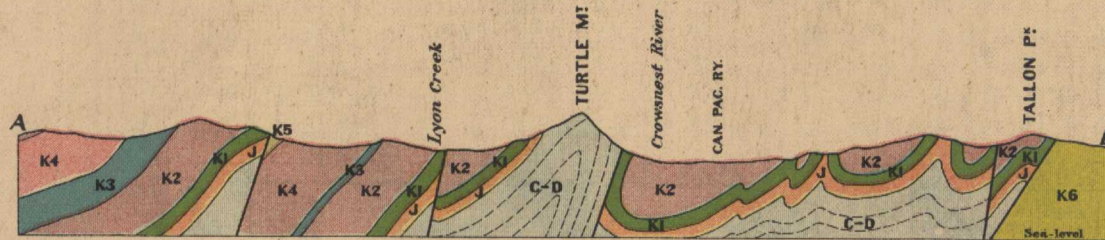


Canada
Department of Mines
 HON. L. CODERRE, MINISTER; A.P. LOW, DEPUTY MINISTER.
 GEOLOGICAL SURVEY
 R.W. BROCK, DIRECTOR.

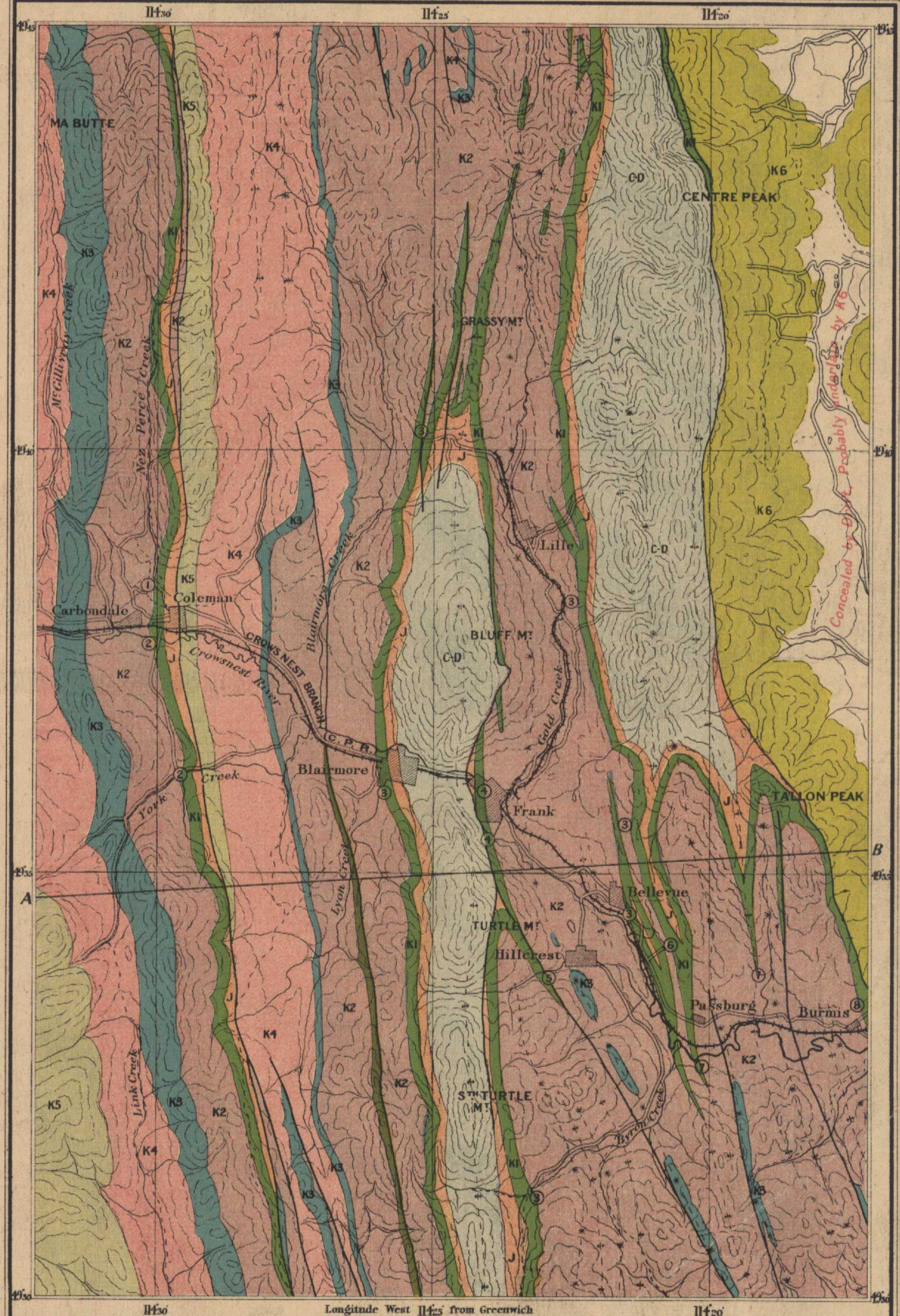


Structural Section along line AB
 Scale: horizontal and vertical, 10,560 feet to 1 inch

GEOLOGY **PRELIMINARY MAP**

LEGEND

MESOZOIC	K6	Undivided (post-Benton, probably including Allison; light coloured sandstone)
	K5	Allison (Belly River) formation (light coloured sandstone)
	K4	Benton formation (dark shale)
	K3	Crownest Volcanics (andesite trachyte tuff and breccia)
	K2	Blairmore (Dakota) formation (chiefly dark sandstone and shaly shale)
	K1	Kootenay formation (coal, shale, indurated sandstone)
J	Ferric formation (dark shale)	
G-D	Turtle Mountain group (light coloured, cherty limestone)	
PALAEOZOIC CARBONIFEROUS AND DEVONIAN	---	Anticlinal axis
	---	Synclinal axis
	---	Fault



LEGEND

---	Railways
---	Roads
---	Trails

- LIST OF MINES**
- ① Mc Gillivray Creek Coal and Coke Co. L^{td}
 - ② International Coal and Coke Co. L^{td}
 - ③ West Canadian Collieries L^{td}
 - ④ Canadian Coal Consolidated L^{td}
 - ⑤ Hillcrest Collieries L^{td}
 - ⑥ Maple Leaf Coal Co.
 - ⑦ Leitch Collieries L^{td}
 - ⑧ Davenport Coal Co. L^{td}

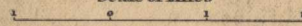
107A

G.O. Senécal, Geographer and Chief Draughtsman.

MAP 107A
 (based 1915)

BLAIRMORE, ALBERTA.

Scale of Miles



To accompany Summary Report, 1912.

Geology by W.W. Leach, 1912.
 Base Map by Topographical Division.

NOT TO BE TAKEN FROM LIBRARY
NE PAS SORTIR DE LA BIBLIOTHÈQUE



107A