

Canada
Department of Mines
GEOLOGICAL SURVEY.

HON. W. TEMPLEMAN, MINISTER, A. P. LOW, DEPUTY MINISTER,
R. W. BROCK, DIRECTOR.

1910

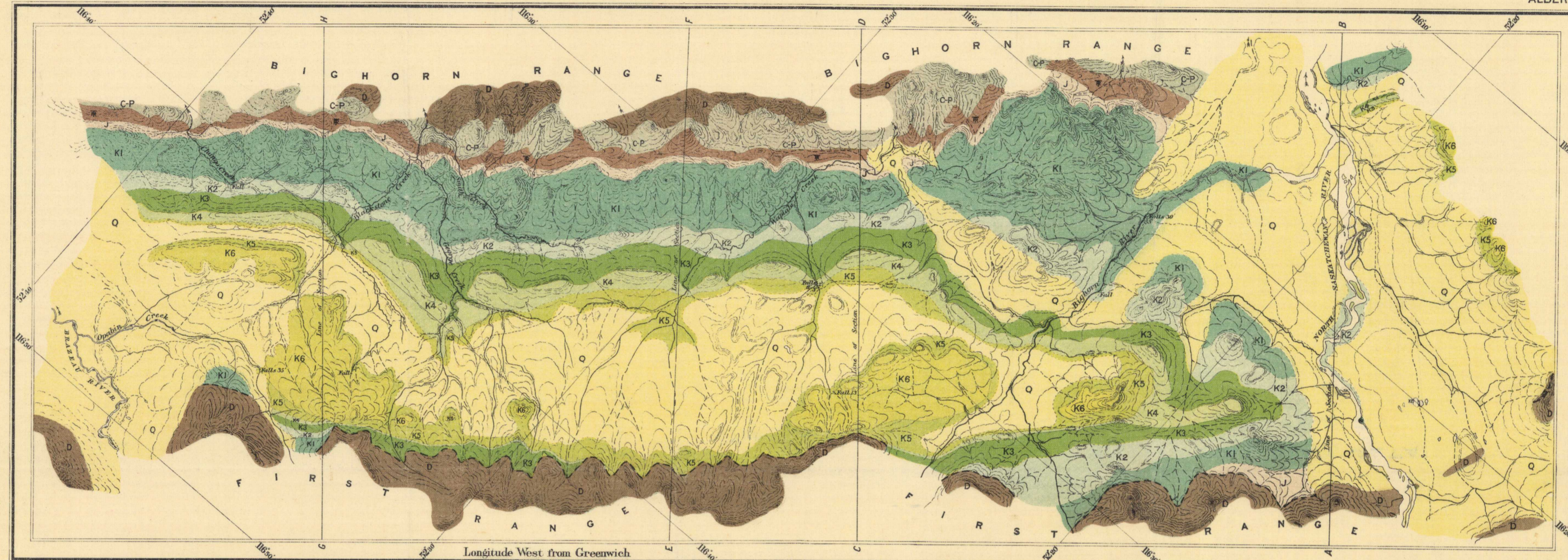
ALBERTA

GEOLOGY, RECONNAISSANCE

- LEGEND**
- QUATERNARY**
PLEISTOCENE AND RECENT
Q
Glacial and river drift
- MESOZOIC**
UPPER CRETACEOUS
K6
Brazeau sandstones, shales and conglomerates
K5
Wapiabi shales
K4
Bighorn sandstones and conglomerates
K3
Blackstone shales
K2
Dakota sandstones and shales
K1
Kootanie formation (coal-bearing)
(Siltstones and shaly sandstones, black shales, coal and conglomerates)
- JURASSIC
J
Ferneie formation
(Shales with a bed of quartzite sandstone)
- TRIASSIC
R
Upper Banff shale
(with a thin bed of white limestone)
- PERMIAN
C-P
Rocky Mountain quartzite (Permian)
Upper Banff limestone (Carboniferous)
Lower Banff shale (Carboniferous)
- DEVONIAN TO PERMIAN
D
Lower Banff limestone
Intermediate beds (Probably Devonian dolomites)

Symbols

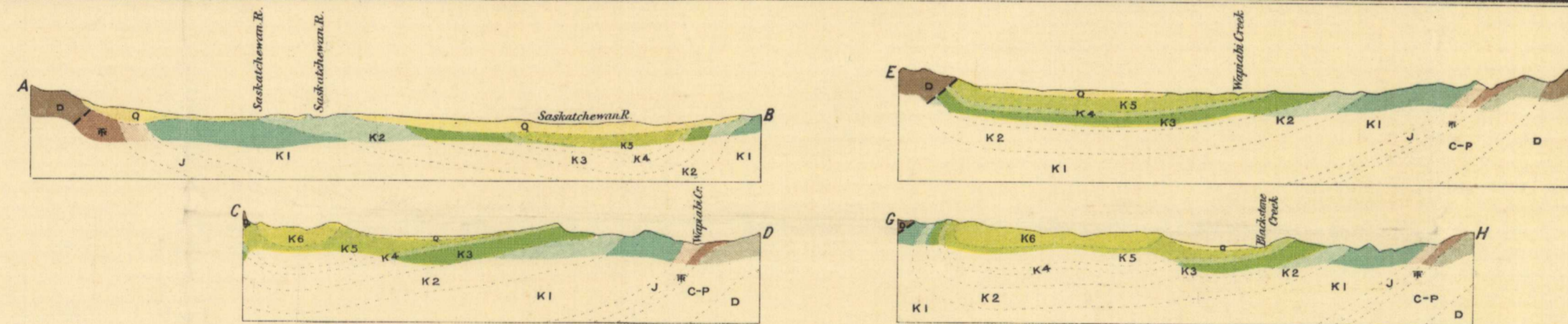
- Fault (approximate)
- Geological Boundary (approximate)
- Geological Boundary (assumed)



C.O. Seacal, Geographer and Chief Draughtman.
H. Byerston, Draughtman.

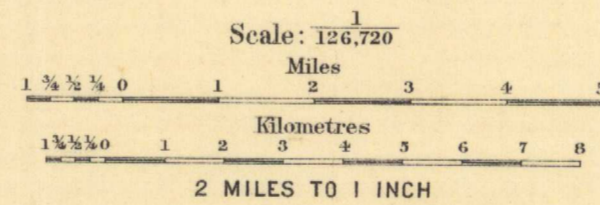


Scale: 70 Miles to 1 Inch



DIAGRAMMATICAL CROSS-SECTIONS ALONG LINES AB, CD, EF, GH.

MAP 7A
BIGHORN COAL BASIN
BETWEEN SASKATCHEWAN AND BRAZEAU RIVERS
ALBERTA



LEGEND

- Culture**
Trails
- Water**
Rivers and Streams (mapped at high water mark)
Watercourses with intermittent flow
- Relief**
Sketched land forms

Magnetic declination about 27° East

GEOLOGY
G.S. MALLDCH 1908

TOPOGRAPHY
(Sketch, with provisional control.)
G.S. MALLDCH 1908
G.S. MALLDCH COMPILER

NOT TO BE REPRODUCED WITHOUT PERMISSION
NE PAS REPRODUIRE SANS PERMISSION

To accompany Memoir No. 9



7A