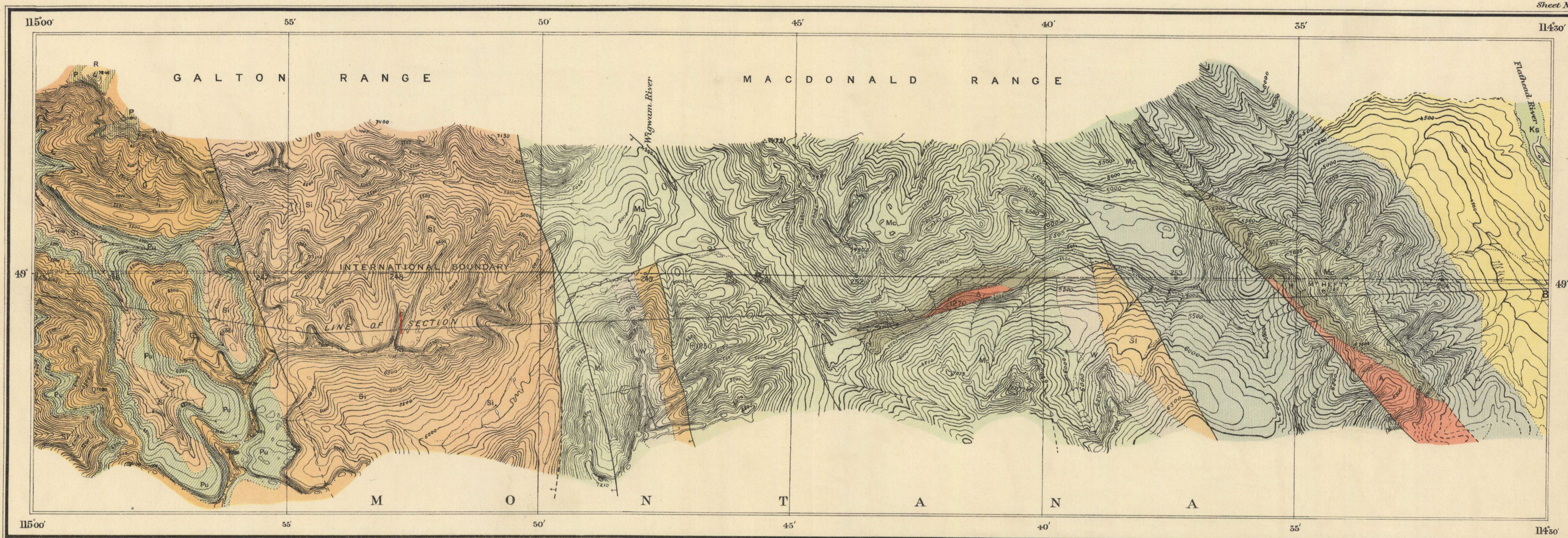


PLEISTOCENE & RECENT
MISSISSIPPIAN & DEVONIAN MIOCENE
chiefly CAMBRIAN(?)
MIDDLE CAMBRIAN(?)
LOWER CAMBRIAN(?)
BELTIAN
CAMBRIAN(?)

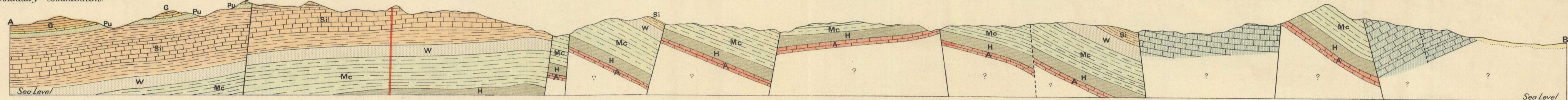
LEGEND

- Glacial drift and alluvium
 - Kishenehn formation
chiefly bluish-grey clay, interbeds of grey sandstone; fossiliferous
 - Limestone
massive, grey, fossiliferous
 - Roosville formation
light green and grey, thin-bedded metargillite
 - Phillips formation
purplish to red, thin-bedded metargillite & quartzite
 - Gateway formation
chiefly thin-bedded, siliceous metargillite, some dolomite at base
 - Purcell lava
massive, basic flow
 - Siyeh formation
massive, dark grey, siliceous magnesian limestone, with much greenish-grey metargillite
 - Wigwam formation
thin to thick bedded, red sandstone and metargillite
 - MacDonald formation
thin to thick bedded, grey metargillite, with rare lenses of dolomite
 - Hefty formation
chiefly thick bedded, reddish sandstone
 - Allyn formation
thin bedded, siliceous dolomite
 - Intrusive
 - Abnormal gabbro
- Symbols
- Geological boundary
 - Fault
 - Glacial Striae

Note. Localities of chemically analyzed rocks, shown thus, +1250



Topography from surveys made by the Boundary Commission.

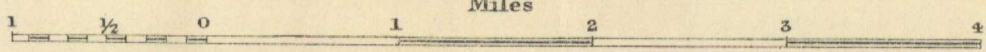


Section along line A B

NOT TO BE TAKEN FROM LIBRARY
NE PAS SORTIR DE LA BIBLIOTHÈQUE

GEOLOGY OF THE FORTY-NINTH PARALLEL, By R.A. Daly.

Scale: 62500 - 09864 Statute Miles to 1 Inch



Contour interval, 100 feet



MAP 75A

75A

Reprinted by permission of Chief Astronomer, to accompany Geological Survey Memoir No 38