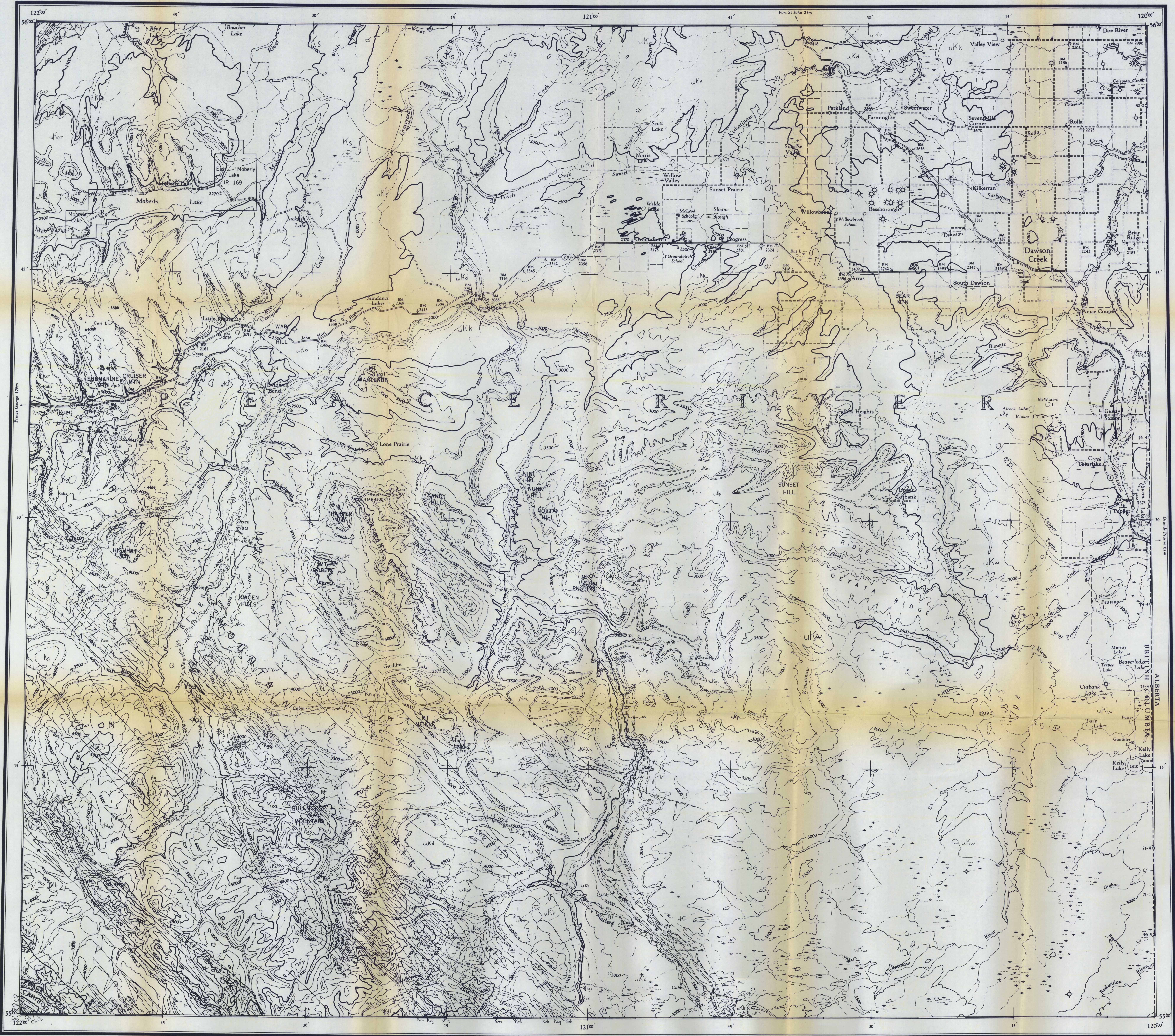


FIL



THE DECLINATION OF THE COMPASS NEEDLE, 1954

Based on control by the Topographical Survey,
 Dept. of Mines and Technical Surveys, and the
 Army Survey Est. R.C.E. Dept. of National Defence 1947-52
 Transmitted, drawn and printed by the A.N.F. 1954-55

Copies may be obtained from
 The Map Distribution Office,
 Dept. of Mines and Technical Surveys,
 Ottawa

Contour Interval 500 Feet
 All Elevations in Feet above Mean Sea Level.

DAWSON CREEK

94 B	94 A	84 D 37
Highway	Charlie Lake	Clear Hills

This map has been produced from a scanned version of the original map. Reproduction par numérisation d'une carte sur papier.