



**GEOLOGICAL SURVEY OF CANADA**  
**COMMISSION GÉOLOGIQUE DU CANADA**

**PAPER 76-28**

This document was produced  
by scanning the original publication.

Ce document est le produit d'une  
numérisation par balayage  
de la publication originale.

**PUBLICATIONS ON THE GEOLOGY OF THE  
ARCTIC ISLANDS (DISTRICT OF FRANKLIN)  
BY THE GEOLOGICAL SURVEY OF CANADA**

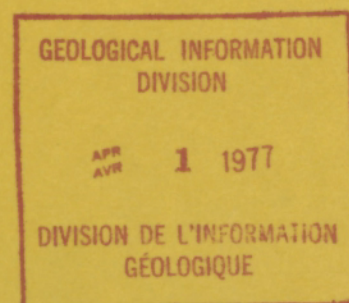
**Revised July, 1976**

Compiled by **R.L. CHRISTIE**



Energy, Mines and  
Resources Canada

Énergie, Mines et  
Ressources Canada



1977



**PAPER 76-28**  
**GEOLOGICAL SURVEY**

**PUBLICATIONS ON THE GEOLOGY OF THE  
ARCTIC ISLANDS (DISTRICT OF FRANKLIN)  
BY THE GEOLOGICAL SURVEY OF CANADA**

**Revised July, 1976**

Compiled by R.L. CHRISTIE

1977

© Minister of Supply and Services Canada 1977

Printing and Publishing  
Supply and Services Canada,  
Ottawa, Canada K1A 0S9,

from the Geological Survey of Canada  
601 Booth St., Ottawa, K1A 0E8

or through your bookseller.

Catalogue No. M44-76-28  
ISBN - 0-660-00808-4

Price: Canada: \$2.00  
Other Countries: \$2.40

Price subject to change without notice

CONTENTS

	<u>Page</u>
Introduction . . . . .	1
Acknowledgments . . . . .	2
Publications of the Geological Survey . . . . .	2
Memoirs . . . . .	2
Bulletins . . . . .	2
Papers . . . . .	5
Information Circulars . . . . .	9
Reports of Activities . . . . .	10
Maps: preliminary series . . . . .	20
Maps: multicoloured "A" series . . . . .	20
Annual and Summary Reports . . . . .	22
Separate Reports . . . . .	22
Economic Geology Series . . . . .	22
Open File Reports . . . . .	22
Age determinations of the Geological Survey of Canada . . . . .	24
K-Ar isotopic ages . . . . .	24
Radiocarbon dates . . . . .	24
Reports in scientific journals other than those of the Geological Survey of Canada . . . . .	27

Illustrations

Figure 1. Index map showing areas covered by geophysical maps . . . . .	36
(a) Aeromagnetic residual anomaly and downward continuation maps	
(b) Aeromagnetic 4-mile series	
(c) Marine surveys: simple Bouger and free air gravity anomaly maps; Plates 1 and 2 of Marine Sciences Paper 12 (GSC Paper 73-37)	
Figure 2. Index map showing areas covered by geophysical maps . . . . .	37
(a) airborne geophysical reconnaissance, 1955 (aeromagnetic, radiometric profiles)	
(b) Aeromagnetic 1- and 2-mile series	





**PUBLICATIONS ON THE GEOLOGY OF THE ARCTIC ISLANDS  
BY THE GEOLOGICAL SURVEY OF CANADA**

INTRODUCTION

The purpose of this paper is to provide a list of publications by officers of the Geological Survey that describe and illustrate the geology of the Canadian Arctic Islands and surrounding continental shelves (the District of Franklin). The list is meant to be current rather than complete; thus, Geological Survey Papers, Information Circulars, and Reports of Activities that are superseded by Bulletins, Memoirs, or later Papers have been omitted. A publication is retained in the list if it contains material not covered by a later publication.

This list of publications includes some papers by members of the Survey at the Atlantic Geoscience Centre (at Bedford Institute of Oceanography, Dartmouth, Nova Scotia) that were published before the centre became a part of the Geological Survey. Certain papers of the Symposium on Offshore Eastern Canada, published in Paper 71-23, are included because of their relevance. The list also includes accounts of work connected with the Geological Survey, such as field work sponsored or supported by the Survey, and papers reporting on Survey collections.

The titles of published abstracts are included in the list where the abstracts contain significant information and the related papers are not yet published. It is intended, by this means, to call attention to forthcoming or newly published papers. Abstracts are subsequently deleted from the list, although a few, not superseded by more detailed papers, are retained.

The compiler reminds the reader: the list is not a complete bibliography. One disadvantage of this partial list is that some important papers, for example papers containing first definitions of formations, may not be included in the list. A researcher of course will see such papers referred to in more recent publications and will find the earlier papers in geological libraries.

Most of the reports are available at distribution offices of the Geological Survey of Canada. Papers published in scientific journals other than those of the Geological Survey are not available at the Geological Survey publications offices, although abstracts of many of these are published in the Survey's Papers series (Number -4, each year).

---

Manuscript received: August 11, 1976  
Author's address: Institute of Sedimentary and  
Petroleum Geology  
3303 - 33rd Street N.W.  
Calgary, Alberta T2L 2A7

The Geological Survey of Canada publishes maps and reports. Maps include basic geological maps and special maps such as those dealing with geophysical observations. The various types of geophysical maps are not listed here but index maps are appended to show the areas of the District of Franklin covered by geophysical surveys. Detailed indices for the geophysical maps are available.

Reports concerning the Arctic Islands region are of several categories:

Memoirs - Comprehensive reports on the geology of specific areas.

Bulletins - Detailed studies on any geological or related subject.

Papers - Reports of all types in a format designed for prompt publication of geological information.

Report of Activities - Assembled short reports providing for "first release" of new information.

Open File - Unedited manuscript reports and maps on file at Geological Survey offices in Ottawa, Calgary, and Vancouver, and available for consultation by appointment.

Many reports are also available at the Atlantic Geoscience Centre, Dartmouth, N.S.

Copies of most Open File material may be obtained at the user's expense through designated commercial firms; names of the firms are available at Survey offices or in Open File 308.

Requests for geological maps and reports should be addressed to:

Geological Survey of Canada  
601 Booth Street,  
Ottawa, Ontario, K1A 0E8  
Canada.

or:  
Institute of Sedimentary and Petroleum  
Geology  
3303 - 33rd Street N.W.  
Calgary, Alberta, T2L 2A7  
Canada.

Note: Gravity maps and scientific papers relating to gravity measurements are published by the Gravity Division of the Earth Physics Branch (formerly the Dominion Observatory) of the Department of Energy, Mines and Resources. A list of these publications is available from that branch or from government bookstores. Current gravity maps are available from the Institute of Sedimentary and Petroleum Geology, Calgary, Alberta.

#### ACKNOWLEDGMENTS

The compiler is grateful for help generously given by Mary H. Brooks and Dale Cormier of the Publications Section, Institute of Sedimentary and Petroleum Geology. The compiler's list of publications was transposed onto a permanent file of 'mag cards' by Romaine Irish, also of the Institute.

The Open File list has been expanded and corrected following O.F. 308 by W.H. Eyre.

#### PUBLICATIONS OF THE GEOLOGICAL SURVEY

##### MEMOIRS

##### Number

- 294 Thorsteinsson, R.  
1959:  
Cornwallis and Little Cornwallis Islands, District of Franklin (1958).
- 309 Harker, P. and Thorsteinsson, R.  
1960:  
Permian rocks and faunas of Grinnell Peninsula, Arctic Archipelago.
- 316 Tozer, E.T.  
1961:  
Triassic stratigraphy and faunas, Queen Elizabeth Islands, Arctic Archipelago.
- 320\* Fortier, Y.O., Blackadar, R.G., Greiner, H.R., McLaren, D.J., McMillan, N.J., Norris, A.W., Roots, E.F., Souther, J.G., Thorsteinsson, R., and Tozer, E.T.  
1963:  
Geology of the north-central part of the Arctic Archipelago, Northwest Territories (Operation Franklin) (Folio of maps and figures available).
- 328 Lemon, R.R.H. and Blackadar, R.G.  
1963:  
Admiralty Inlet area, Baffin Island, District of Franklin.
- 330\* Thorsteinsson, R. and Tozer, E.T.  
1962:  
Banks, Victoria, and Stefansson Islands, Arctic Archipelago.
- 330\* Fyles, J.G.  
1962:  
Physiography; Ch. II *in* Banks, Victoria, and Stefansson Islands, Arctic Archipelago; p. 8-17 (Map 1135A available).

- 331 Christie, R.L.  
1964:  
Geological reconnaissance of northeastern Ellesmere Island, District of Franklin.
- 332\* Tozer, E.T. and Thorsteinsson, R.  
1964:  
Western Queen Elizabeth Islands, Arctic Archipelago (Map 1142A available).
- 345 Blackadar, R.G.  
1967:  
Geology of Mingo Lake - Macdonald Island map-area, Baffin Island, District of Franklin.
- 347 Christie, R.L.  
1967:  
Bache Peninsula, Ellesmere Island, Arctic Archipelago.
- 378 Kerr, J.Wm.  
1974:  
Geology of Bathurst Island Group and Byam Martin Island, Arctic Canada (Operation Bathurst Island) (Map 1350A available separately).
- 386 Balkwill, H.R. and Roy, K.J.  
(in press):  
King Christian Island, District of Franklin.
- 387 Miall, A.D.  
(in press):  
Mesozoic and Tertiary geology of Banks Island, Arctic Canada: the history of an unstable craton margin.

##### BULLETINS

##### Number

- 38 Thorsteinsson, R. (*in* Sweet, W.C., and Miller, A.K., 1957)  
1957:  
Summary of geology of Cornwallis and Little Cornwallis Island (with map), p. 3-11.
- 38 Sweet, W.C. and Miller, A.K.  
1957:  
Ordovician cephalopods from Cornwallis and Little Cornwallis Islands, District of Franklin, Northwest Territories.
- 41 Frebold, H.  
1958:  
Fauna, age and correlation of the Jurassic rocks of Prince Patrick Island (1957).
- 59\* Frebold, H.  
1960:  
The Jurassic faunas of the Canadian Arctic, Lower Jurassic and lowermost Middle Jurassic ammonites.
- 61 Riley, G.C.  
1960:  
Petrology of the gneisses of Cumberland Sound, Baffin Island, Northwest Territories.

\* Out of Print

Bulletins (cont'd)

Number

- 65 Boucot, A.J., Martinsson, A., Thorsteinsson, R., Walliser, O.H. Whittington, H.B., and Yochelson, E.  
1960:  
A Late Silurian fauna from the Sutherland River Formation, Devon Island, Canadian Arctic Archipelago.
- 73\* Gregory, A.F., Bower, M.E., and Morely, L.W.  
1961:  
Geological interpretation of aerial magnetic and radiometric profiles, Arctic Archipelago, Northwest Territories (*see* index map attached).
- 74 Frebold, H.  
1961:  
The Jurassic faunas of the Canadian Arctic: Middle and Upper Jurassic ammonites.
- 75 Thorsteinsson, R.  
1961:  
The history and geology of Meighen Island, Arctic Archipelago.
- 97 Blackadar, R.G.  
1964:  
Basic intrusions of the Queen Elizabeth Islands, District of Franklin.
- 101 Fyles, J.G.  
1963:  
Surficial geology of Victoria and Stefansson Islands, District of Franklin.
- 105 Christie, R.L.  
1964:  
Diabase-gabbro sills and related rocks of Banks and Victoria Islands, Arctic Archipelago.
- 119 Frebold, H.  
1964:  
The Jurassic faunas of the Canadian Arctic: Cadoceratinae.
- 120 Jeletzky, J.A.  
1965:  
*Thorsteinssonoceras*, a new craspeditid ammonite from the Valanginian of Ellesmere Island, Arctic Archipelago.
- 123 Tozer, E.T.  
1965:  
Latest Lower Triassic ammonoids from Ellesmere Island and northeastern British Columbia.
- 128 Jeletzky, J.A.  
1966:  
Upper Volgian ammonites and buchias from Arctic Canada.

Bulletins (cont'd)

Number

- 131 Nassichuk, W.W., Furnish, W.M., and Glenister, B.F.  
1965:  
The Permian ammonoids of Arctic Canada.
- 134 Bolton, T.E.  
Pt. I  
1965:  
Trilobites from Upper Silurian rocks of the Canadian Arctic Archipelago: *Encrinurus* (*Frammia*) and *Hemiarges* in Contributions to Canadian Paleontology, p. 3-14.
- 134 Bolton, T.E.  
Pt. II  
1965:  
Ordovician and Silurian tabulate corals *Labyrinthites*, *Arcturia*, *Troedssonites*, *Multisolenia*, and *Boreaster* in Contributions to Canadian Paleontology, p. 15-33.
- 138 Christie, R.L.  
1967:  
Reconnaissance of the surficial geology of northeastern Ellesmere Island, Arctic Archipelago.
- 151\* Blackadar, R.G.  
1967:  
Precambrian geology of Boothia Peninsula, Somerset Island and Prince of Wales Island, District of Franklin.
- 153 Ormiston, A.R.  
1967:  
Lower and Middle Devonian trilobites of the Canadian Arctic Islands.
- 155 Logan, A.  
1967:  
Middle and Upper Triassic spiriferinid brachiopods from the Canadian Arctic Archipelago.
- 156 Tozer, E.T.  
1967:  
A standard for Triassic time.
- 157 Trettin, H.P.  
1969:  
Lower Paleozoic sediments of northwestern Baffin Island, District of Franklin.
- 163 Cowie, J.W.  
1968:  
Lower Cambrian faunas from Ellesmere Island, District of Franklin in Contributions to Canadian Paleontology, p. 1-27.
- 165 Dineley, D.L.  
Pt. II  
1968:  
Osteostraci from Somerset Island in Contributions to Canadian Paleontology, p. 47-63.

\* Out of Print

Bulletins (cont'd)

Number

- 170 McLearn, F.H.  
1969:  
Middle Triassic (Anisian) ammonoids from northeastern British Columbia and Ellesmere Island.
- 171 Trettin, H.P.  
1969:  
Pre-Mississippian geology of northern Axel Heiberg and northwestern Ellesmere Island, Arctic Archipelago.
- 182\* Collins, D.H.  
1969:  
Devonian nautiloids from Northern Canada in Contributions to Canadian Paleontology, p. 31-50.
- 182\* McGregor, D.C.  
1969:  
Devonian plant fossils of the genera *Kryshthoforichia*, *Nikitinsporites*, and *Archaeoperisaccus* in Contributions to Canadian Paleontology, p. 91-106.
- 182\* Nassichuk, W.W.  
1969:  
A Late Pennsylvanian ammonoid from Ellesmere Island, Canadian Arctic Archipelago in Contributions to Canadian Paleontology, p. 123-127.
- 182\* Hills, L.V. and Wallace, Sandra  
1969:  
*Paraalnipollenites*, a new form genus from uppermost Cretaceous and Paleocene rocks of Arctic Canada and Russia in Contributions to Canadian Paleontology, p. 139-145.
- 183 Trettin, H.P.  
1969:  
Geology of Ordovician to Pennsylvanian rocks, M'Clintock Inlet, north coast of Ellesmere Island, Canadian Arctic Archipelago.
- 191 Blackadar, R.G.  
1970:  
Precambrian geology of northwestern Baffin Island, District of Franklin.
- 192\* Nassichuk, W.W.  
1971:  
*Helicoprion* and *Physonemus*, Permian invertebrates from the Assistance Formation, Canadian Arctic Archipelago in Contributions to Canadian Paleontology, p. 83-89.
- 192\* Chamney, T.P.  
1971:  
New species of foraminifera, Cretaceous-Jurassic boundary, Arctic America in Contributions to Canadian Paleontology, p. 95-113.

Bulletins (cont'd)

Number

- 197\* Norford, B.S.  
1971:  
Upper Ordovician corals *Chaetetipora* and *Sibiriolites* from northern Ellesmere Island, District of Franklin in Contributions to Canadian Paleontology, p. 1-11.
- 197\* Ormiston, Allen R.  
1971:  
A new Devonian harpid trilobite species from Lowther Island, District of Franklin in Contributions to Canadian Paleontology, p. 23-27.
- 197\* Spinosa, Claude, and Nassichuk, W.W.  
1971:  
The Permian ammonoid *Stacheoceras* discovered on Ellesmere Island, Canadian Arctic in Contributions to Canadian Paleontology, p. 89-93.
- 197\* Hopkins, William S., Jr.  
1971:  
Palynology of the Lower Cretaceous Isachsen Formation on Melville Island, District of Franklin in Contributions to Canadian Paleontology, p. 109-133.
- 200 Copeland, M.J.  
Pt. II  
1971:  
Additional Silurian Arthropoda from Arctic and eastern Canada.
- 203 Trettin, H.P.  
1971:  
Geology of lower Paleozoic formations, Hazen Plateau and southern Grant Land Mountains, Ellesmere Island, Arctic Archipelago.
- 216 Church, M.  
1972:  
Baffin Island sandurs: a study of arctic fluvial processes.
- 222 Broad, D.S.  
1973:  
Amphiaspidiformes (Heterostraci) from the Silurian of the Canadian Arctic Archipelago in Contributions to Canadian Paleontology, p. 35-51.
- 222 Broad, D.S. and Dineley, D.L.  
1973:  
*Torpedaspis*, a new Upper and Lower Devonian genus of Cyathaspididae (Ostracodermi) from Arctic Canada in Contributions to Canadian Paleontology, p. 53-91.
- 222 Ormiston, A.R.  
1973:  
Lower Permian trilobites from northern Yukon Territory and Ellesmere Island, District of Franklin in Contributions to Canadian Paleontology, p. 129-139.

\* Out of Print



Bulletins (cont'd)

Number

- 222 Mosher, L.C.  
1973:  
Triassic conodonts from British Columbia and the northern Arctic Islands *in* Contributions to Canadian Paleontology, p. 141-193.
- 224 Thorsteinsson, R.  
1974:  
Carboniferous and Permian stratigraphy of Axel Heiberg Island and western Ellesmere Island, Canadian Arctic Archipelago (with tectonic map). Maps 1298A - 1312A and 1348A are available separately in a folio to accompany this bulletin.
- 229 Frisch, T.  
1974:  
Metamorphic and plutonic rocks of northernmost Ellesmere Island, Canadian Arctic Archipelago.
- 235 Boucot, A.J.  
1975:  
*Tryblidium thorsteinssoni*; first North American occurrence of the Silurian monoplacophoran genus *in* Contributions to Canadian Paleontology, p. 1-4.
- 235 Johnson, J.G.  
1975:  
Devonian brachiopods from the *Quadrithyrus* zone (upper Lochkovian), Canadian Arctic Archipelago *in* Contributions to Canadian Paleontology, p. 5-57.
- 237 Nassichuk, W.W.  
1975:  
Carboniferous ammonoids and stratigraphy in the Canadian Arctic Archipelago.
- 243 Frebold, H.  
1975:  
The Jurassic faunas of the Canadian Arctic; Lower Jurassic ammonites, biostratigraphy and correlations.
- 251 Trettin, H.P.  
1975:  
Investigations of lower Paleozoic geology, Foxe Basin, northeastern Melville Peninsula, and parts of northwestern and central Baffin Island.
- 254 Morrow, D.W. and Kerr, J.Wm.  
(in press):  
Stratigraphy and sedimentology of lower Paleozoic formations near Prince Alfred Bay, Devon Island.
- 256 Smith, R.E.  
1976:  
Biostratigraphy and paleoecology of the *Atrypella* community, Upper Silurian Douro Formation, Devon Island, District of Franklin *in* Contributions to Canadian Paleontology, p. 13-37.

Bulletins (cont'd)

Number

- 256 Jackson, D.E., Kerr, J.Wm., and Morrow, D.W.  
1976:  
A synrhabdosome of *Monograptus fanicus* Koren from the Lower Devonian of Devon Island, District of Franklin *in* Contributions to Canadian Paleontology, p. 39, 40.
- 258 Miall, A.D.  
1976:  
Proterozoic and Paleozoic geology of Banks Island, Arctic Canada.
- 259 Brideaux, W.W. and Fisher, M.J.  
1976:  
Upper Jurassic - Lower Cretaceous dinoflagellate assemblages from Arctic Canada.
- 260 Kerr, J.Wm.  
1976:  
Stratigraphy of central and eastern Ellesmere Island, Arctic Canada, III. Upper Ordovician (Richmondian), Silurian and Devonian (Parts I and II published as GSC Papers 67-27, Pts. I, II).
- 268 Nassichuk, W.W. and Wilde, G.L.  
(in press):  
The Belcher Channel Formation at Blind Fiord, southwestern Ellesmere Island; stratigraphy and fusulinaceans.
- 272 Trettin, H.P.  
(in press):  
Middle Ordovician to Lower Devonian deep-water succession at southeastern margin of Hazen Trough, Cañon Fiord, Ellesmere Island.
- 276 Mayr, U.  
(in press):  
Stratigraphy and correlation of lower Paleozoic subsurface sections, Cornwallis, Devon, Somerset and Russell Islands, Canadian Arctic Archipelago.

PAPERS

(Papers superseded by Memoirs and Bulletins have been omitted)

Number

- 52-32\* Prest, V.K.  
1952:  
Notes on the geology of parts of Ellesmere and Devon Islands, Northwest Territories (superseded except for remarks on eastern Devon Island).
- 56-9 Christie, R.L.  
1959:  
Geological reconnaissance of the north coast of Ellesmere Island, District of Franklin, Northwest Territories (Pleistocene and Recent; for bedrock geology *see* Bulls. 171, 183, 229).

\* Out of Print.

## Papers (cont'd)

Number

- 60-8\* Blackadar, R.G. and Fraser, J.A.  
1960:  
Precambrian geology of Arctic Canada (A summary account) (Also published in 'Geology of the Arctic', v. I, G.O. Raasch, ed., Univ. of Toronto Press, 1961).
- 60-10\* Craig, B.G., and Fyles, J.G.  
1960:  
Pleistocene geology of Arctic Canada (Also published in 'Geology of the Arctic', v. I, G.O. Raasch, ed., Univ. of Toronto Press, 1961).
- 61-21 Pelletier, B.R.  
1961:  
Submarine Geology Program, Polar Continental Shelf Project, Isachsen, District of Franklin.
- 61-27 Wagner, Frances J.E.  
1961:  
Faunal report, Submarine Geology Program, Polar Continental Shelf Project, Isachsen, District of Franklin.
- 62-19 Tozer, E.T.  
1962:  
Illustrations of Canadian fossils, Triassic of Western and Arctic Canada.
- 62-35 Blackadar, R.G.  
1963:  
Additional notes to accompany Map 3-1958 (Fury and Hecla Strait Map-Area) and Map 4-1958 (Foxe Basin North Map-Area).
- 62-36 Playford, G. and Barss, M.S.  
1963:  
Upper Mississippian microflora from Axel Heiberg Island, District of Franklin.
- 63-4\* Frebold, H.  
1964:  
Illustrations of Canadian fossils: Jurassic of Western and Arctic Canada.
- 63-11 Horne, D.R.  
1963:  
Marine geology, Peary Channel, District of Franklin (Polar Continental Shelf Project).
- 63-19\* Blackadar, R.G. and Christie, R.L.  
1963:  
Geological reconnaissance, Boothia Peninsula, and Somerset, King William, and Prince of Wales Islands, District of Franklin. (Report and Maps 36-1963, 37-1963).
- 63-22 Marlowe, J.I. and Vilks, G.  
1963:  
Marine geology, eastern part of Prince Gustaf Adolf Sea, District of Franklin.

## Papers (cont'd)

Number

- 63-30 Tozer, E.T.  
1963:  
Mesozoic and Tertiary stratigraphy, western Ellesmere Island and Axel Heiberg Island, District of Franklin.
- 63-31\* Douglas, R.J.W., Norris, D.K., Thorsteinsson, R., and Tozer, E.T.  
1963:  
Geology and petroleum potentialities of Northern Canada.
- 63-44 Craig, B.G.  
1964:  
Surficial geology of Boothia Peninsula and Somerset, King William, and Prince of Wales Islands, District of Franklin. (Report and Map 46-1963).
- 64-11\* Jeletzky, J.A.  
1964:  
Illustrations of Canadian fossils, Lower Cretaceous marine index fossils of the sedimentary basins of Western and Arctic Canada.
- 64-30 Blake, W., Jr.  
1964:  
Preliminary account, glacial history of Bathurst Island.
- 64-53 Vilks, G.  
1964:  
Foraminiferal study of East Bay, Mackenzie King Island, District of Franklin (Polar Continental Shelf Project).
- 64-55 McGregor, D.C.  
1965:  
Illustrations of Canadian fossils: Triassic, Jurassic, and Lower Cretaceous spores and pollen of Arctic Canada.
- 65-12\* Tozer, E.T.  
1965:  
Lower Triassic stages and ammonoid zones of Arctic Canada (*and see* Bull. 156).
- 65-20 Craig, B.G.  
1965:  
Notes on moraines and radiocarbon dates in northwest Baffin Island, Melville Peninsula and northeast District of Keewatin.
- 66-8 Kranck, Kate  
1966:  
Sediments of Exeter Bay, Baffin Island, District of Franklin.
- 66-10 Heywood, W.W.  
1966:  
Geological notes on Operation Wager, Northwest Territories.

---

\* Out of Print

## Papers (cont'd)

Number

- 66-26 Blake, W., Jr.  
1966:  
End moraines and deglaciation chronology  
in northern Canada with special reference  
to southern Baffin Island.
- 66-29 Marlowe, J.I.  
1968:  
Sedimentology of the Prince Gustaf Sea  
area, District of Franklin.
- 66-30 McGregor, D.C. and Owens, B.  
1966:  
Illustrations of Canadian fossils: Devonian  
spores of eastern and northern Canada.
- 66-34\* Trettin, H.P. and Hills, L.V.  
1966:  
Lower Triassic tar sands of northwestern  
Melville Island, Arctic Archipelago.
- 66-40 Heywood, W.W.  
1966:  
Geological notes northeastern District of  
Keewatin and southern Melville Peninsula,  
District of Franklin.
- 66-47\* Blackadar, R.G.  
1968:  
Geological reconnaissance, southern Baffin  
Island, District of Franklin.
- 66-55 Norford, B.S.  
1966:  
Ordovician stratigraphic section at Daly  
River, northeast Ellesmere Island, District  
of Franklin.
- 66-58 Hood, P.J., Sawatzky, P., and Bower, M.E.  
1967:  
Progress report on low-level aeromagnetic  
profiles over the Labrador Sea, Baffin Bay,  
and across the North Atlantic Ocean (*see*  
O.F. 280).
- 66-7 Petryk, A.A.  
1967:  
Some Silurian stromatoporoids from north-  
western Baffin Island, District of Franklin.
- 67-24 Christie, R.L.  
1967:  
Stratigraphic sections of Paleozoic rocks  
on Prince of Wales and Somerset Islands,  
District of Franklin, Northwest Territories.
- 67-27 Kerr, J.Wm.  
Pt. I 1967:  
Stratigraphy of central and eastern  
Ellesmere Island, Arctic Canada: Proterozoic  
and Cambrian.
- 67-27 Kerr, J.Wm.  
Pt. II 1968:  
Stratigraphy of central and eastern Ellesmere  
Island, Arctic Canada: Ordovician.

## Papers (cont'd)

Number

- Kerr, J.Wm.  
Pt. III 1976:  
(*see* Bull. 260).
- 67-43 Kerr, J.Wm.  
1967:  
Vendom Fiord Formation - a new red-bed  
unit of probable early Middle Devonian  
(Eifelian) age, Ellesmere Island, Arctic  
Canada.
- 67-48 Bostock, H.S.  
1968:  
A catalogue of selected airphotographs  
(includes many of Arctic region, annotated  
for geological features).
- 67-64\* Thorsteinsson, R. and Kerr, J.Wm.  
1968:  
Cornwallis Island and adjacent smaller  
Islands, Canadian Arctic Archipelago.
- 68-16\* Stott, D.F.  
1968:  
Ellef Ringnes Island, Canadian Arctic Arch-  
ipelago (Report and Map 4-1968; reprinted  
map available).
- 68-17 Petryk, A.A.  
1969:  
Mesozoic and Tertiary stratigraphy at Lake  
Hazen, northern Ellesmere Island, District  
of Franklin.
- 68-31 Nassichuk, W.W. and Christie, R.L.  
1969:  
Upper Paleozoic and Mesozoic stratigraphy  
in the Yelverton Pass region, Ellesmere  
Island, District of Franklin.
- 68-44\* Bhattacharyya, B.K.  
1968:  
Analysis of aeromagnetic data over the  
Arctic Islands and continental shelf of  
Canada. (Aeromagnetic residual anomaly  
and downward continuation maps published  
separately; *see* index).
- 69-29 Buckley, J.T.  
1969:  
Gradients of past and present outlet  
glaciers.
- 69-30 St-Onge, D.A.  
1969:  
Nivation landforms.
- 70-15\* Norford, B.S., Braun, W.K., Chamney, T.P.,  
Fritz, W.H., McGregor, D.C., Norris, A.W.,  
Pedder, A.E.H., and Uyeno, T.T.  
1970:  
Biostratigraphic determinations of fossils  
from the subsurface of the Yukon Territory  
and the Districts of Mackenzie and Franklin.

## Papers (cont'd)

Number

- 70-22\* Jeletzky, J.A.  
1971:  
Marine Cretaceous biotic provinces and paleogeography of western and Arctic Canada: illustrated by a detailed study of ammonites.
- 70-38 Owens, Bernard  
1971:  
Miospores from the Middle and early Upper Devonian rocks of the western Queen Elizabeth Islands, Arctic Archipelago.
- 71-12 Trettin, H.P.  
1971:  
Reconnaissance of lower Paleozoic geology, Phillips Inlet region, north coast of Ellesmere Island, District of Franklin.
- 71-13\* McGregor, D.C. and Uyeno, T.T.  
1972:  
Devonian spores and conodonts of Melville and Bathurst Islands, District of Franklin.
- 71-23 Baker, S.R. and Friedman, G.M.  
1973:  
Sedimentation in an arctic marine environment: Baffin Bay between Greenland and the Canadian Arctic Archipelago *in* Symposium on Offshore Eastern Canada, p. 471-498.
- 71-23 Hood, P. and Bower, M.E.  
1973:  
Low-level aeromagnetic surveys of the continental shelves bordering Baffin Bay and the Labrador Sea *in* Symposium on Offshore Eastern Canada, p. 573-598.
- 71-23 Hyndman, R.D., Clarke, D.B., Hume, H., Johnson, J., Keen, M.J., Park, I., and Pye, G.  
1973:  
Geophysical and geological studies in Baffin Bay and the Labrador Sea *in* Symposium on Offshore Eastern Canada, p. 621-631.
- 71-23 Kristjansson, L.G. and Deutsch, E.R.  
1973:  
Magnetic properties of rock samples from the Baffin Bay coast *in* Symposium on Offshore Eastern Canada, p. 545-564.
- 71-23 Løken, O.H.  
1973:  
Bathymetric observations along the east coast of Baffin Island: submarine moraines and iceberg distribution *in* Symposium on Offshore Eastern Canada, p. 509-519.
- 71-23 Martin, R.  
1973:  
Geological history of Baffin Bay - continental drift before sea-floor spreading and the exploration for hydrocarbons *in* Symposium on Offshore Eastern Canada, p. 599-620.

## Papers (cont'd)

Number

- 71-23 McMillan, N.J.  
1973:  
Surficial geology of Labrador and Baffin Island shelves *in* Symposium on Offshore Eastern Canada, p. 451-468.
- 71-23 Ross, D.I., Keen, C.E., Barrett, D.L., and Manchester, K.S.  
1973:  
Geophysical studies on the structure of Baffin Bay *in* Symposium on Offshore Eastern Canada, p. 633-638.
- 71-23 Stehman, C.F. and Gregory, M.  
1973:  
A preliminary account of benthonic and planktonic foraminifera in Baffin Bay, Davis Strait and the Labrador Sea *in* Symposium on Offshore Eastern Canada, p. 499-507.
- 71-28 Hueber, F.M.  
1971:  
Early Devonian land plants from Bathurst Island, District of Franklin.
- 72-28 Kuc, M.  
1973:  
Fossil statoblasts of *Cristatella mucedo* Cuvier in the Beaufort Formation and in interglacial and postglacial deposits of the Canadian Arctic.
- 72-37 Hopkins, W.S., Jr., and Balkwill, H.R.  
1973:  
Description, palynology and paleoecology of the Hassel Formation (Cretaceous) on eastern Ellef Ringnes Island, District of Franklin.
- 72-38 Norford, B.S., Brideaux, W.W., Chamney, T.P., Copeland, M.J., Frebald, H., Hopkins, W.S., Jr., Jeletzky, J.A., Johnson, B., McGregor, D.C., Norris, A.W., Pedder, A.E.H., Tozer, E.T., and Uyeno, T.T.  
1973:  
Biostratigraphic determinations of fossils from the subsurface of the Yukon Territory and the Districts of Franklin, Keewatin and Mackenzie.
- 73-8 Krupicka, J.  
1973:  
Granulite facies rocks on northeastern Devon Island, Arctic Archipelago.
- 73-10 Christie, R.L.  
1973:  
Three new lower Paleozoic formations of the Boothia Peninsula region, Canadian Arctic Archipelago.

\* Out of Print

## Papers (cont'd)

Number

- 73-12 Hopkins, W.S., Jr.  
1974:  
Some spores and pollen from the Christopher Formation (Albian) of Ellef and Amund Ringnes Island, and northwestern Melville Island, Canadian Arctic Archipelago.
- 73-35 Reinhardt, E.W. and Jackson, G.D.  
1973:  
Use of a geological field data collecting form on Operation Bylot, north-central Baffin Island, 1968.
- 73-37 Ross, D.I.  
1973:  
Free air and simple Bouger gravity maps of Baffin Bay and adjacent continental margins (Marine Sciences Paper 12).
- 74-11 Barnes, C.R., Brideaux, W.W., Chamney, T.P., Clowser, D.R., Dunay, R.E., Fisher, M.J., Fritz, W.H., Hopkins, W.S., Jr., Jeletzky, J.A., McGregor, D.C., Norford, B.S., Norris, A.W., Pedder, A.E.H., Rauwerda, P.J., Sherrington, P.F., Sliter, W.V., Tozer, E.T., Uyeno, T.T., and Waterhouse, J.B.  
1974:  
Biostratigraphic determinations of fossils from the subsurface of the Northwest and Yukon Territories.
- 74-20 Hodgson, D.A. and Haselton, G.M.  
1974:  
Reconnaissance glacial geology, north-eastern Baffin Island.
- 74-21 Taylor, F.C.  
1974:  
Reconnaissance geology of a part of the Precambrian Shield, northern Quebec and Northwest Territories.
- 74-24 Kuc, M.  
1974:  
*Calliargon aftonianum* Steere in late Tertiary and Pleistocene deposits of Canada (includes 3 localities in the Arctic Islands).
- 74-25 Jackson, G.D., Davidson, A., and Morgan, W.C.  
1976:  
Geology of the Pond Inlet map-area, Baffin Island, District of Franklin (1975).
- 74-29 Jackson, G.D. and Davidson, A.  
1975:  
Bylot Island map-area, District of Franklin.
- 74-30 Vol. 1 Vilks, G.  
1974:  
The distribution of planktonic foraminifera in the sediments and water of the Northwest Passage and northern Baffin Bay: a tool for paleoceanographic synthesis *in* Offshore Geology of Eastern Canada, v. I, p. 109-121.

## Papers (cont'd)

Number

- 74-30 Pelletier, B.R. and Buckley, D.E.  
Vol. I 1974:  
The development of environmental marine geology at the Bedford Institute of Oceanography (*see* 'The field research program from 1960 to 1974: the High Arctic; the Beaufort Sea'. Review of geological results) *in* Offshore Geology of Eastern Canada, v. I, p. 8-13.
- 74-30 Grant, A.C.  
Vol. II 1975:  
Structural modes of the western margin of the Labrador Sea *in* Offshore Geology of Eastern Canada, v. 2, p. 217-231.
- 74-30 Pelletier, B.R., Ross, D.I., Keen, C.E., and Vol. II Keen, M.J.  
1975:  
Geology and geophysics of Baffin Bay *in* Offshore Geology of Eastern Canada, v. 2, p. 247-258.
- 74-39 Brideaux, W.W., Chamney, T.P., Dunay, R.E., Fritz, W.H., Hopkins, W.S., Jr., Jeletzky, J.A., McGregor, D.C., Norford, B.S., Norris, A.W., Pedder, A.E.H., Sherrington, P.F., Sliter, W.V., Sweet, A.R., Uyeno, T.T., and Waterhouse, J.B.  
1975:  
Biostratigraphic determinations of fossils from the subsurface of the Districts of Franklin and Mackenzie.
- 75-10 Brideaux, W.W., Clowser, D.R., Copeland, M.J., Jeletzky, J.A., Norford, B.S., Norris, A.W., Pedder, A.E.H., Sweet, A.R., Thorsteinsson, R., Uyeno, T.T., and Wall, J.  
1976:  
Biostratigraphic determinations from the subsurface of the Districts of Franklin and Mackenzie and the Yukon Territory.
- 75-18 McLaren, P. and Frobel, D.  
1975:  
Under-ice SCUBA techniques for marine geological studies.
- 76-11 Young, F.G., Myhr, D.W., and Yorath, C.J.  
1977:  
Geology of the Beaufort-Mackenzie Basin.

## INFORMATION CIRCULARS

(Information Circular notes superseded by Papers, Bulletins, or Memoirs have been omitted).

- 4\* Christie, R.L.  
1961:  
Southeast Ellesmere Island, 1960, p. 2, 3 (untitled notes; *and see* Map 12-1962).



## Information Circulars (cont'd)

Number

- 5\* Fyles, J.G.  
1962:  
Surficial geology, western Ellesmere and eastern Axel Heiberg Islands, 1961, p. 4-6 (untitled notes).

## REPORTS OF ACTIVITIES

(Reports superseded by Papers, Bulletins, Memoirs, or later Reports of Activities have been omitted).

- 63-1 Marlowe, J.I. and Vilks, G.  
1963:  
Marine Geology Program, Polar Continental Shelf Project, p. 4.
- 63-1 Pelletier, B.R.  
1963:  
Sedimentation and submarine topography of the continental shelf, western Queen Elizabeth Islands, p. 4-5.
- 63-2 Kranck, K.M.  
1963:  
Recent marine sediments of Exeter Bay, Baffin Island, District of Franklin, p. 23.
- 64-1 Craig, B.G.  
1964:  
Surficial geology, Operation Admiralty, p. 3.
- 64-1 Pelletier, B.R.  
1964:  
Marine Geology Program, Arctic Ocean, p. 6-7.
- 64-1 Pelletier, B.R.  
1964:  
Marine Geology Program, eastern Arctic Islands, p. 7-8.
- 64-1 Vilks, G.  
1964:  
Bottom sediment and foraminifera studies in East Bay, Mackenzie King Island, p. 8-9.
- 64-2 Christie, R.L. and Kerr, J.Wm.  
1964:  
The Boothia Arch, p. 6-8.
- 65-1 Blackadar, R.G.  
1965:  
Reconnaissance mapping, southwestern Baffin Island, p. 2.
- 65-1 Blake, W., Jr.  
1965:  
Surficial geology, Bathurst Island, p. 2, 3.

## Reports of Activities (cont'd)

Number

- 65-1 Craig, B.G.  
1965:  
Surficial geology, Operation Wager, north-east District of Keewatin and Melville Peninsula, District of Franklin, p. 17-19.
- 65-1 Fyles, J.G.  
1965:  
Surficial geology, western Queen Elizabeth Islands, p. 3-5.
- 65-1 Nassichuk, W.W.  
1965:  
Pennsylvanian and Permian rocks in the Parry Islands group, Canadian Arctic Archipelago, p. 9-12.
- 65-1 Pelletier, B.R.  
1965:  
Bottom studies on the Arctic Continental Shelf, p. 12.
- 65-1 Vilks, G.  
1965:  
Bottom sediment and foraminiferal studies in Satellite Bay, Prince Patrick Island, District of Franklin, p. 15, 16.
- 65-2 McGregor, D.C.  
1965:  
Upper Devonian spores from the Griper Bay Formation, Parry Islands, NWT, p. 78.
- 66-1\* Blackadar, R.G.  
1966:  
Operation Amadjuak, southern Baffin Island, p. 2.
- 66-1\* Dineley, D.L.  
1966:  
Fossil vertebrates from the Read Bay and Peel Sound Formations, Somerset Island, District of Franklin, p. 12, 13.
- 66-1\* Jackson, G.D.  
1966:  
North Baffin Island, p. 14, 15.
- 66-2 Overton, A.  
1966:  
Seismic refraction surveys, western Queen Elizabeth Islands and polar continental margin, p. 20-24.
- 66-2 Gross, G.A.  
1966:  
The origin of high grade iron deposits on Baffin Island, N.W.T., p. 39-43.
- 66-2 Nassichuk, W.W.  
1966:  
Notes on Pennsylvanian ammonoids from northern Ellesmere Island, p. 66.

---

\* Out of Print

Reports of Activities (cont'd)

Number

- 67-1 Fyles, J.G.  
Pt. A\* 1967:  
Winter Harbour moraine, Melville Island,  
p. 8, 9.
- 67-1 Nassichuk, W.W.  
Pt. A\* 1967:  
Studies of Permo-Carboniferous and Mesozoic  
strata on northern Ellesmere Island,  
p. 10-12.
- 68-1 Hood, P.J., Sawatzky, P., and Bower, M.E.  
Pt. A\* 1968:  
Aeromagnetic investigations of Baffin Bay,  
the North Atlantic Ocean and the Ottawa  
area, p. 79-84.
- 68-1 Blake, W. Jr.  
Pt. A\* 1968:  
Glacial geology and geomorphology, south-  
western Ellesmere and northwestern Devon  
Islands, District of Franklin, p. 154, 155.
- 68-1 Kerr, J.Wm.  
Pt. A\* 1968:  
Southwest Ellesmere Island and western  
Devon Island (Operation Grinnell), p. 199,  
200) (*and see* Map 10-1968).
- 68-1 Nassichuk, W.W.  
Pt. A\* 1968:  
Upper Paleozoic studies in the Sverdrup  
Basin, District of Franklin, p. 204-206.
- 68-1 Chamney, T.P.  
Pt. B\* 1968:  
Foraminifera useful for determining the  
Jurassic-Cretaceous boundary in Arctic  
America, p. 82, 83.
- 69-1 Jackson, G.D.  
Pt. A\* 1969:  
Reconnaissance of north-central Baffin  
Island, p. 171-176 (*and see* Paper 74-29).
- 69-1 Blake, W., Jr.  
Pt. A\* 1969:  
Glacial geology and geomorphology, south-  
eastern Ellesmere Island and Coburg Island,  
District of Franklin, p. 188, 189.
- 69-1 French, H.M.  
Pt. A\* 1969:  
Geomorphological investigations, Beaufort  
Plain, District of Franklin, p. 192.
- 69-1 Fyles, J.G.  
Pt. A\* 1969:  
Northwestern Banks Island, District of  
Franklin, p. 194, 195.
- 69-1 Hills, L.V.  
Pt. A\* 1969:  
Beaufort Formation, northwestern Banks  
Island, District of Franklin, p. 204-207.

Report of Activities (cont'd)

Number

- 69-1 Christie, R.L.  
Pt. A\* 1969:  
Eastern Devon Island and southeast Ellesmere  
Island, District of Franklin, p. 231-234.
- 69-1 Hopkins, W.S., Jr.  
Pt. B\* 1969:  
Jurassic - Cretaceous boundary, northwest  
Melville Island, p. 75, 76.
- 70-1 French, H.M.  
Pt. A\* 1970:  
Geomorphological investigations: northern  
and southern Banks Island, District of  
Franklin, p. 190-192.
- 70-1 Christie, R.L.  
Pt. A\* 1970:  
Eastern Devon Island, District of Franklin,  
p. 206, 207.
- 70-1 Kuc, M.  
Pt. A\* 1970:  
Peat deposits and fossil mosses in the  
Arctic, p. 161, 162.
- 71-1 Gross, G.A.  
Pt. A\* 1971:  
Geology of iron and manganese deposits in  
Canada (Melville Peninsula, District of  
Franklin), p. 84.
- 71-1 Blake, W., Jr.  
Pt. A\* 1971:  
Glacial geology and geomorphology, southern  
Ellesmere Island, Coburg, and Devon Islands,  
District of Franklin, p. 157, 158.
- 71-1 Blake, W., Jr.  
Pt. A\* 1971:  
Pumice on raised beaches, eastern Arctic  
Canada, p. 182.
- 71-1 Christie, R.L., Kerr, J.W., and Thorsteinsson,  
R.  
Pt. A\* 1971:  
Operation Peel Sound - Prince of Wales  
Island region, p. 197 (*and see* O.F. 66).
- 71-1 Trettin, H.P.  
Pt. A\* 1971:  
Stratigraphy and sedimentology of lower  
Paleozoic clastic units, Tanquary and  
Cañon Fiord regions, Ellesmere Island,  
p. 236-241 (*and see* Paper 76-1A, p. 431-444).
- 71-1 Jackson, G.D.  
Pt. A\* 1971:  
Operation Penny Highlands, south-central  
Baffin Island, p. 138-140.
- 71-1 Sangster, D.F.  
Pt. A\* 1971:  
Geology of lead and zinc deposits in Canada  
(Arctic Islands), p. 93.

Reports of Activities (cont'd)

Number

- 71-1 Yorath, C.J., Shearer, J., and Havard, C.J.  
Pt. A\* 1971:  
Seismic and sediment studies in the Beaufort Sea, p. 243, 244.
- 71-1 Hopkins, W.S., Jr.  
Pt. B\* 1971:  
Preliminary ecological comments on Albian microfloras from the Canadian Arctic Islands, p. 97-102 (*and see* Paper 73-12).
- 71-1 Hopkins, W.S., Jr.  
Pt. B\* 1971:  
Cretaceous and/or Tertiary rocks, northern Somerset Island, District of Franklin, p. 102-104.
- 72-1 Reesor, J.E.  
Pt. A 1972:  
Penrhyn Group metamorphic complex, Melville Peninsula, District of Franklin, p. 106-107.
- 72-1 Barnett, D.M., and Kuc, M.  
Pt. A 1972:  
Terrain performance, Melville Island, District of Franklin, p. 137-139.
- 72-1 Barnett, D.M.  
Pt. A 1972:  
Surficial geology and geomorphology of Melville Island, District of Franklin, p. 152, 153.
- 72-1 England, J.H.  
Pt. A 1972:  
The glacial chronology of the Archer Fiord - Lady Franklin Bay area, northeastern Ellesmere Island, District of Franklin, p. 154, 155.
- 72-1 Balkwill, H.R.  
Pt. A. 1972:  
Structure and stratigraphy, Ringnes Islands and nearby smaller islands, District of Franklin, p. 196-197.
- 72-1 Kerr, J.Wm. and Morrow, D.W.  
Pt. A 1972:  
Southwest Ellesmere Island, western Devon Island, District of Franklin (Operation Grinnell), p. 215, 216.
- 72-1 Mossop, G.D.  
Pt. A 1972:  
Baumann Fiord Formation evaporites of central Ellesmere Island, p. 216-217 (*and see* Paper 72-1B, p. 86-90; Paper 73-1A, p. 264-267).
- 72-1 Nassichuk, W.W.  
Pt. A 1972:  
Permian "hydrozoan" mounds discovered on southwestern Ellesmere Island, p. 219-221.

Reports of Activities (cont'd)

Number

- 72-1 Roy, K.J.  
Pt. A 1972:  
Bjorne Formation (Lower Triassic), western Ellesmere Island, p. 224-226.
- 72-1 Mossop, G.D.  
Pt. B\* 1972:  
Baumann Fiord Formation evaporites of central Ellesmere Island, Arctic Canada, p. 86-90 (*and see* Paper 72-1A, p. 216, 217; Paper 73-1A, p. 264-267).
- 72-1 Kuc, M.  
Pt. B\* 1972:  
The response of tundra plants to anthropogenic habitats in the High Arctic, p. 105-112.
- 73-1 Pelletier, B.R.  
Pt. A 1973:  
Bottom studies of the Beaufort Sea, p. 115.
- 73-1 Ross, D.I.  
Pt. A 1973:  
Geophysical studies of Baffin Bay and adjacent continental margins, p. 116.
- 73-1 Vilks, G.  
Pt. A 1973:  
Ecology of Recent planktonic foraminifera in the surface waters of the Beaufort Sea, p. 122.
- 73-1 Frisch, Thomas  
Pt. A 1973:  
Granitic and associated rocks of the Committee Bay area, Districts of Keewatin and Franklin, p. 145.
- 73-1 Barnett, D.M. and Forbes, D.L.  
Pt. A 1973:  
Terrain performance, Melville Island, District of Franklin, p. 182.
- 73-1 Hodgson, D.A.  
Pt. A 1973:  
Terrain performance, central Ellesmere Island, District of Franklin, p. 185.
- 73-1 Barnett, D.M. and Forbes, D.L.  
Pt. A 1973:  
Surficial geology and geomorphology of Melville Island, p. 189-192.
- 73-1 Grosswald, M.G.  
Pt. A 1973:  
Reconnaissance glacial geology, southwestern Grinnell Peninsula, Devon Island, District of Franklin, p. 199, 200.
- 73-1 Hills, L.V.  
Pt. A 1973:  
Beaufort Formation, western Queen Elizabeth Islands, p. 202.

---

\* Out of Print

Reports of Activities (cont'd)

Number

- 73-1 Hodgson, D.A.  
Pt. A 1973:  
Surficial geology and geomorphology of central Ellesmere Island, p. 203.
- 73-1 French, H.M.  
Pt. A 1973:  
Geomorphological processes and terrain sensitivity, Banks Island, District of Franklin, p. 220-223.
- 73-1 Shearer, J.M.  
Pt. A 1973:  
Surficial geology and geomorphology, Mackenzie Bay - Continental Shelf, p. 242.
- 73-1 Balkwill, H.R.  
Pt. A 1973:  
Structure and stratigraphy, Ringnes Islands and nearby smaller islands, District of Franklin, p. 247-250.
- 73-1 Bender, K.P.  
Pt. A 1973:  
Pennsylvanian and Permian conodonts from Arctic Canada, p. 251
- 73-1 Kerr, J. Wm., Morrow, D.W., and Savigny, K.W.  
Pt. A 1973:  
Grinnell Peninsula, Devon Island, District of Franklin, p. 137.
- 73-1 Mossop, G.D.  
Pt. A 1973:  
Lower Ordovician evaporites of the Baumann Fiord Formation, Ellesmere Island, p. 264-267 (and see Paper 72-1A, p. 216, 217; Paper 72-1B, p. 86-90).
- 73-1 Roy, K.J.  
Pt. A 1973:  
Isachsen Formation, Amund Ringnes Island, District of Franklin, p. 269-273.
- 73-1 Trettin, H.P.  
Pt. A 1973:  
Stratigraphy and sedimentology of Upper Ordovician to Lower Devonian clastic formations, Cañon Fiord region, Ellesmere Island, p. 273-277.
- 73-1 Hunter, J.A.  
Pt. B 1973:  
Shallow marine refraction surveying in the Mackenzie Delta and Beaufort Sea, p. 59-66.
- 73-1 Pelletier, B.R.  
Pt. B 1973:  
Clastic sedimentation in Arctic fluvial-deltaic-marine systems, District of Franklin, Canada, p. 87, 88.
- 73-1 Vilks, G.  
Pt. B 1973:  
Planktonic foraminifera in the water column and sediments in the Canadian Arctic, p. 95.

Reports of Activities (cont'd)

Number

- 73-1 Hodgson, D.A.  
Pt. B 1973:  
Landscape, and late-glacial history, head of Vendom Fiord, Ellesmere Island, p. 129-136.
- 73-1 Barnett, D.M.  
Pt. B 1973:  
Radiocarbon dates from eastern Melville Island, p. 137-140.
- 73-1 Blake, W., Jr.  
Pt. B 1973:  
Age of pumice on raised beaches, eastern Arctic Canada, p. 141, 142.
- 73-1 Kuc, M.  
Pt. B 1973:  
Plant macrofossils in Tertiary coal and amber from northern Lake Hazen, Ellesmere Island, N.W.T., p. 143.
- 73-1 Mackay, J. Ross  
Pt. B 1973:  
Winter cracking (1967-1973) of ice-wedges, Garry Island, N.W.T., p. 161-163.
- 73-1 Hopkins, W.S., Jr.  
Pt. B 1973:  
Some preliminary palynological conclusions on the Albian and Upper Cretaceous strata of Amund and Ellef Ringnes Islands, District of Franklin, p. 179, 180.
- 74-1 Hobson, G.D.  
Pt. A\* 1974:  
Seismic refraction - Sverdrup Basin, p. 71.
- 74-1 Hood, P.J. and Bower, M.E.  
Pt. A\* 1974:  
Davis Strait: low-level aeromagnetic profiles obtained in 1973, p. 73-75.
- 74-1 Slaney, V.R.  
Pt. A\* 1974:  
ERTS imagery reviewed, p. 103-106.
- 74-1 Washkurak, S.  
Pt. A\* 1974:  
Portable weather satellite receiving unit at Resolute Bay, N.W.T., p. 107-110.
- 74-1 Reesor, J.E.  
Pt. A\* 1974:  
Penrhyn Group metamorphic complex, Melville Peninsula, District of Franklin, p. 153.
- 74-1 Frisch, T.  
Pt. A\* 1974:  
Geological studies in the Prince Albert Hills, western Melville Peninsula, District of Franklin, p. 163, 164.
- 74-1 Taylor, F.C., Gordon, T.M., and Henderson, J.B.  
Pt. A\* 1974:  
Operation Nuvilik, New Quebec and Northwest Territories, p. 189, 190.

Reports of Activities (cont'd)

Number

- 74-1 Kuc, M.  
Pt. A\* 1974:  
Fossil flora of the Beaufort Formation,  
Meighen Island, Northwest Territories,  
p. 193-195.
- 74-1 Lichti-Federovich, S.  
Pt. A\* 1974:  
Pollen analysis of surface snow from the  
Devon Island ice cap, p. 197-199.
- 74-1 Matthews, J.V., Jr.  
Pt. A\* 1974:  
A preliminary list of insect fossils from  
the Beaufort Formation, Meighen Island,  
District of Franklin, p. 203-206.
- 74-1 Barnett, D.M. and Dredge, L.A.  
Pt. A\* 1974:  
Surficial geology and geomorphology of  
Melville Island, District of Franklin,  
p. 239.
- 74-1 Hodgson, D.A.  
Pt. A\* 1974:  
Surficial geology, geomorphology and ter-  
rain disturbance, central Ellesmere Island,  
District of Franklin (Parts of 49D, E, G,  
H, 340B), p. 247-248.
- 74-1 Lewis, C.F.M., Horsman, J.R., and Ross, D.I.  
Pt. A\* 1974:  
Geological, geophysical, and hydrographic  
studies in Lancaster Sound and Maxwell Bay,  
District of Franklin, p. 251, 252.
- 74-1 French, H.M.  
Pt. A\* 1974:  
Geomorphological processes and terrain  
sensitivity, Banks Island, District of  
Franklin, p. 263-266.
- 74-1 McLaren, P.  
Pt. A\* 1974:  
Coastal erosion - sedimentation, southeast  
Melville and western Byam Martin Islands,  
District of Franklin, p. 267, 268.
- 74-1 Taylor, R.B.  
Pt. A\* 1974:  
A coastal investigation of northern Somerset  
Island, District of Franklin, p. 269, 270.
- 74-1 Taylor, R.B.  
Pt. A\* 1974:  
Nearshore studies using small water-craft  
along east Melville Island, District of  
Franklin, p. 271, 272.
- 74-1 Balkwill, H.R.  
Pt. A\* 1974:  
Structure and stratigraphy, Ringnes Islands  
and nearby smaller islands, District of  
Franklin, p. 287-289.

Reports of Activities (cont'd)

Number

- 74-1 Christie, R.L.  
Pt. A\* 1974:  
Northeastern Ellesmere Island: Lake Hazen  
region and Judge Daly Promontory, p. 297-299.
- 74-1 Miall, A.D.  
Pt. A\* 1974:  
Stratigraphy of the Elf *et al.* Storkerson  
Bay A-15 well, p. 335-336.
- 74-1 Miall, A.D.  
Pt. A\* 1974:  
Bedrock geology of Banks Island, District  
of Franklin, p. 336-342.
- 74-1 Roy, K.J.  
Pt. A\* 1974:  
Transport directions in the Isachsen  
Formation (Lower Cretaceous), Sverdrup  
Islands, District of Franklin, p. 351-353.
- 74-1 Smith, R.E.  
Pt. A\* 1974:  
Upper Silurian and Lower Devonian (Gedinnian)  
biostratigraphy and brachiopod faunas,  
Baillie-Hamilton, Prince of Wales and  
Bathurst Islands, District of Franklin,  
p. 355.
- 74-1 Trettin, H.P.  
Pt. A\* 1974:  
Stratigraphy and sedimentology of Silurian  
and Devonian clastic formations, central  
Ellesmere Island, p. 357-360.
- 74-1 Trettin, H.P.  
Pt. A\* 1974:  
Lower Paleozoic geology of Foxe Basin,  
northeastern Melville Peninsula, and parts  
of northern and central Baffin Island,  
p. 361.
- 74-1 Hunter, J.A.M. and Good, R.L.  
Pt. A\* 1974:  
Shallow seismic surveys, Beaufort Sea,  
p. 368.
- 74-1 Heywood, W.W.  
Pt. A\* 1974:  
Geological reconnaissance of northern  
Melville Peninsula, District of Franklin  
(Parts of 47A, B, C, D), p. 381.
- 74-1 Allan, R.J.  
Pt. B\* 1974:  
Trace metal dispersion in an arctic desert  
landscape: a Pb-Zn deposit on Little  
Cornwallis Island, District of Franklin,  
p. 51-56.
- 74-1 Currie, R.G. and Tiffin, D.L.  
Pt. B\* 1974:  
Preliminary results of a shipborne magnetic  
survey in Amundsen Gulf, District of  
Franklin, p. 65-67.

\* Out of Print



Reports of Activities (cont'd)

Number

- 74-1 Hunter, J.A.  
Pt. B\* 1974:  
A shallow seismic experiment - Beaufort Sea, March 1974, p. 87, 88.
- 74-1 Hunter, J.A., Good, R.L., and Hobson, G.D.  
Pt. B\* 1974:  
Mapping the occurrence of sub-seabottom permafrost in the Beaufort Sea by shallow refraction techniques, p. 91-94.
- 74-1 Vilks, G.  
Pt. B\* 1974:  
Foraminiferal, molluscan and lithologic study of sediment cores from the Beaufort Sea and Northwest Passage, p. 127, 128.
- 74-1 Wagner, F.J.E.  
Pt. B\* 1974:  
Benthonic foraminiferida and mollusca in the Beaufort Sea, p. 130.
- 74-1 Sanford, B.V.  
Pt. B\* 1974:  
Paleozoic geology of the Hudson Bay region (includes Hudson Strait, Foxe Channel, and Foxe Basin), p. 144-146.
- 74-1 Hills, L.V. and Matthews, J.V., Jr.  
Pt. B\* 1974:  
A preliminary list of fossil plants from the Beaufort Formation, Meighen Island, District of Franklin, p. 224-226.
- 74-1 Kuc, M.  
Pt. B\* 1974:  
The interglacial flora of Worth Point, western Banks Island, p. 227-231.
- 74-1 Blake, W., Jr.  
Pt. B\* 1974:  
Periglacial features and landscape evolution, central Bathurst Island, District of Franklin, p. 235-244.
- 74-1 Mackay, J.R.  
Pt. B\* 1974:  
Measurement of upward freezing above permafrost with a self-positioning thermistor probe, p. 250, 251.
- 74-1 Mackay, J.R.  
Pt. B\* 1974:  
Performance of a heat transfer device, Garry Island, N.W.T., p. 252-254.
- 74-1 McLaren, P.  
Pt. B\* 1974:  
Arctic diving observations at Resolute Bay, N.W.T. and the North Pole, p. 257, 258.
- 74-1 Miall, A.D.  
Pt. B\* 1974:  
Subsurface geology of western Banks Island, p. 278-281.

Reports of Activities (cont'd)

Number

- 75-1 Hobson, G.D. and Overton, A.  
Pt. A 1975:  
Seismic refraction - Sverdrup Basin, p. 88.
- 75-1 Hood, P.J. and Bower, M.E.  
Pt. A 1975:  
Northern Baffin Bay: low-level aeromagnetic profiles obtained in 1974, p. 89-93.
- 75-1 Scott, W.J.  
Pt. A 1975:  
Preliminary experiments in marine resistivity near Tuktoyaktuk, District of Mackenzie, p. 141-145.
- 75-1 Ross, D.I. and Falconer, R.K.H.  
Pt. A 1975:  
Geological studies of Baffin Bay, Davis Strait, and adjacent continental margins, p. 181-183.
- 75-1 Frisch, T. and Goulet, N.  
Pt. A 1975:  
Geological studies in western Melville Peninsula, District of Franklin, p. 323, 324.
- 75-1 Morgan, W.C., Bourne, J., Herd, R.K., Pickett, J.W., and Tippett, C.R.  
1975:  
Geology of the Foxe Fold Belt, Baffin Island, District of Franklin, p. 343-347.
- 75-1 Reesor, J.E., LeCheminant, A.N., and Henderson, J.R.  
Pt. A 1975:  
Geology of the Penrhyn Group metamorphic complex, Melville Peninsula, District of Franklin, p. 349-351.
- 75-1 Schau, M.  
Pt. A 1975:  
Volcanogenic rocks of the Prince Albert Group, Melville Peninsula, District of Franklin, p. 359-361.
- 75-1 Barnett, D.M., Edlund, S.A., and Dredge, L.A.  
Pt. A 1975:  
Integrated landscape mapping of eastern Melville Island, District of Franklin, p. 381-382.
- 75-1 Blake, W., Jr. and Lewis, C.F.M.  
Pt. A 1975:  
Marine surficial geology: observations in the High Arctic, 1974, p. 383-387.
- 75-1 Boydell, A.N.  
Pt. A 1975:  
Evaluation of the potential uses of Earth Resources Technology Satellite (ERTS-1) data for small-scale terrain mapping in Canada's North, p. 389-392.

\* Out of Print

Reports of Activities (cont'd)

Number

- 75-1 Boydell, A.N., Drabinsky, K.A., and  
Pt. A Netterville, J.A.  
1975:  
Terrain inventory and land classification,  
Boothia Peninsula and northern Keewatin;  
p. 393-395.
- 75-1 Tarnocai, C. and Boydell, A.N.  
Pt. A 1975:  
Biophysical study of the Boothia Peninsula  
and northern Keewatin, p. 423, 424.
- 75-1 Vincent, J-S., Tucker, C.M., and Edlund, S.A.  
Pt. A 1975:  
Surficial geology inventory, Banks Island,  
District of Franklin; p. 431-434.
- 75-1 Blake, W., Jr.  
Pt. A 1975:  
Glacial geological investigations in north-  
western Greenland (includes data from  
Coburg Island and Clarence Head, Ellesmere  
Island), p. 435-439.
- 75-1 Lichti-Federovich, S.  
Pt. A 1975:  
Pollen analysis of ice core samples from  
the Devon Island ice cap, p. 441-444.
- 75-1 Day, T.J.  
Pt. A 1975:  
Reconnaissance studies of surface processes,  
Banks Island, District of Franklin, p. 457.
- 75-1 French, H.M.  
Pt. A 1975:  
Pingo investigations and terrain disturbance  
studies, Banks Island, District of Franklin,  
p. 459-464.
- 75-1 Mackay, J. Ross  
Pt. A 1975:  
Relict ice wedges, Pelly Island, N.W.T.,  
p. 469, 470.
- 75-1 McLaren, P.  
Pt. A 1975:  
Under-ice diving observations in the coastal  
environments of southeast Melville and  
western Byam Martin Islands, p. 475-477.
- 75-1 Pissart, A.  
Pt. A 1975:  
Banks Island, N.W.T.: pingos, wind action,  
periglacial structures, p. 479-481.
- 75-1 Shearer, J. and Blasco, S.  
Pt. A 1975:  
Further observations of the scouring  
phenomena in the Beaufort Sea; p. 483-493.
- 75-1 Taylor, R.B.  
Pt. A 1975:  
Coastal investigations of northern Somerset  
Island and Barrow Strait, District of  
Franklin, p. 501-504.

Reports of Activities (cont'd)

Number

- 75-1 Taylor, R.B. and Lewis, C.F.M.  
Pt. A 1975:  
Nearshore marine geological reconnaissance  
at Cunningham Inlet, Somerset Island,  
N.W.T., p. 505-507.
- 75-1 Balkwill, H.R. and Bustin, R.M.  
Pt. A 1975:  
Stratigraphic and structural studies,  
central Ellesmere Island and eastern Axel  
Heiberg Island, District of Franklin,  
p. 513-517.
- 75-1 Kerr, J.Wm.  
Pt. A 1975:  
Grinnell Peninsula, Devon Island, District  
of Franklin, p. 545.
- 75-1 Miall, A.D.  
Pt. A 1975:  
Geology of Banks Island, District of  
Franklin, p. 559-563.
- 75-1 Nassichuk, W.W. and Roy, K.J.  
Pt. A 1975:  
Mound-like carbonate rocks of Early  
Cretaceous (Albian) age adjacent to Hoodoo  
Dome, Ellef Ringnes Island, District of  
Franklin, p. 565-569.
- 75-1 Gagne, R.M. and Hunter, J.A.  
Pt. B 1975:  
Hammer seismic studies of surficial mate-  
rials, Banks Island, Ellesmere Island, and  
Boothia Peninsula, N.W.T., p. 13-17.
- 75-1 Hunter, J.A. and Godfrey, R.J.  
Pt. B 1975:  
A shallow marine refraction survey,  
Cunningham Inlet, Somerset Island, N.W.T.,  
p. 19-22.
- 75-1 McLaren, P., Scott, S.J., and Hunter, J.A.  
Pt. B 1975:  
The implications of geophysical studies on  
the permafrost regime and surficial geology,  
Melville Island and Byam Channel, N.W.T.,  
p. 39-45.
- 75-1 Kurfurst, P.J.  
Pt. B 1975:  
Assessment of terrain performance in the  
Mackenzie valley and the Arctic Islands,  
p. 97-98.
- 75-1 Barnett, D.M., Edlund, S.A., and Dredge, L.A.  
Pt. B 1975:  
Interdisciplinary environmental data pre-  
sentation for eastern Melville Island: an  
approach, p. 105-107.
- 75-1 Lichti-Federovich, S.  
Pt. B 1975:  
Pollen analysis of surface snow from five  
Canadian Arctic ice caps, p. 135-137.

Reports of Activities (cont'd)

Number

- 75-1 Lewis, C.P.  
Pt. B 1975:  
Sediments and sedimentary processes, Yukon-Beaufort Sea coast, p. 165-170.
- 75-1 Balkwill, H.R., Bustin, R.M., and Hopkins, W.S., Jr.  
Pt. B 1975:  
Eureka Sound Formation at Flat Sound, Axel Heiberg Island, and chronology of the Eureka Orogeny, p. 205-207.
- 75-1 Davies, G.R.  
Pt. B 1975:  
Upper Paleozoic carbonates and evaporites in the Sverdrup Basin, Canadian Arctic Archipelago, p. 209-214.
- 75-1 Davies, G.R. and Krouse, H.R.  
Pt. B 1975:  
Carbon and oxygen isotopic composition of late Paleozoic calcite cements, Canadian Arctic Archipelago - preliminary results and interpretation, p. 215-220.
- 75-1 Davies, G.R. and Krouse, H.R.  
Pt. B 1975:  
Sulphur isotope distribution in Paleozoic sulphate evaporites, Canadian Arctic Archipelago, p. 221-225.
- 75-1 Davies, G.R. and Nassichuk, W.W.  
Pt. B 1975:  
Gravity-slide megastructures in deep-water carbonates of the Pennsylvanian-Permian Hare Fiord Formation, of Ellesmere Island, p. 227-232.
- 75-1 Jackson, D.E.  
Pt. B 1975:  
A tropical Ordovician graptolite fauna from near the North Pole, p. 233-235.
- 75-1 Kemper, E.  
Pt. B 1975:  
Upper Deer Bay Formation (Berriasian-Valanginian) of Sverdrup Basin and biostratigraphy of the Arctic Valanginian, p. 245-254.
- 75-1 Mayr, U.  
Pt. B 1975:  
Correlation of lower Paleozoic subsurface sections, Devon, Cornwallis, and Somerset Islands, District of Franklin, p. 255, 256.
- 75-1 Miall, A.D.  
Pt. B 1975:  
Stratigraphy of the Deminex CGDC FOC Amoco Orksut I-44 well, p. 257-259.
- 75-1 Nassichuk, W.W.  
Pt. B 1975:  
The stratigraphic significance of Permian ammonoids on Ellesmere Island, p. 277-283.

Reports of Activities (cont'd)

Number

- 75-1 Reinson, G.E.  
Pt. B 1975:  
Lithofacies analysis of cores from the Borden Island Formation, Drake Point, Melville Island, p. 297-301.
- 75-1 Stephens, L.E. and Cooper, R.V.  
Pt. B 1975:  
Results of a shipborne gravity survey of Amundsen Gulf, p. 325-327.
- 75-1 Kerr, J.Wm.  
Pt. B 1975:  
Summary of stratabound zinc-lead deposits of Little Cornwallis and nearby islands, Canadian Arctic, p. 329-332.
- 75-1 Davies, G.R.  
Pt. C 1975:  
Hoodoo L-41: diapiric halite facies of the Otto Fiord Formation in the Sverdrup Basin, Arctic Archipelago, p. 23-29.
- 75-1 Blake, W., Jr.  
Pt. C 1975:  
Pattern of postglacial emergence, Cape Storm and South Cape Fiord, southern Ellesmere Island, N.W.T., p. 69-77.
- 75-1 Bornhold, B.D., Lewis, C.F.M., and Fenerty, N.E.  
Pt. C 1975:  
Arctic marine surficial geology; AIDJEX 1975, p. 79-84.
- 75-1 Hodgson, D.A.  
Pt. C 1975:  
The terrain mapping and evaluation system adopted for the eastern Queen Elizabeth Islands, p. 95-100.
- 75-1 Tucker, C.M.  
Pt. C 1975:  
Interpretation of seismic shothole data from western Banks Island, District of Franklin, p. 101-104.
- 75-1 Kemper, E. and Schmitz, H.H.  
Pt. C 1975:  
Stellate nodules from the upper Deer Bay Formation (Valanginian) of Arctic Canada, p. 109-119.
- 75-1 Maurice, Y.T.  
Pt. C 1975:  
A geochemical orientation survey for uranium and base metal exploration in southwest Baffin Island, p. 239-241.
- 75-1 Nassichuk, W.W. and Davies, G.R.  
Pt. C 1975:  
The Permian Belcher Channel Formation at Grinnell Peninsula, Devon Island, p. 267-277.

Reports of Activities (cont'd)

Number

- 76-1 Mackay, J.R.  
Pt. A 1976:  
Pleistocene permafrost, Hooper Island,  
Northwest Territories, p. 17, 18.
- 76-1 Vincent, J.S. and Gauthier, R.C.  
Pt. A 1976:  
Inventaire des dépôts de surface de l'île  
Banks, district de Franklin, p. 27.
- 76-1 Bornhold, B.D.  
Pt. A 1976:  
Marine surficial geology: central and  
eastern Arctic, p. 29-31.
- 76-1 MacLean B. and Srivastava, S.P.  
Pt. A 1976:  
Shallow corehole drilling on the Baffin  
Island shelf, p. 141-143.
- 76-1 Netterville, J.A., Dyke, A.S., Thomas, R.D.,  
and Drabinsky, K.A.  
Pt. A 1976:  
Terrain inventory and Quaternary geology,  
Somerset, Prince of Wales, and adjacent  
islands, p. 145-154.
- 76-1 Miles, M.  
Pt. A 1976:  
An investigation of riverbank and coastal  
erosion, Banks Island, District of Franklin,  
p. 105-200.
- 76-1 Barnett, D.M., Dredge, L.A., and Edlund, S.A.  
Pt. A 1976:  
Terrain inventory: Bathurst, Cornwallis  
and adjacent islands, Northwest Territories,  
p. 201-204.
- 76-1 Anderson, J.C. and Durrant, R.L.  
Pt. A 1976:  
Hydrologic reconnaissance, Thomsen River  
basin, Banks Island, District of Franklin,  
p. 221-227.
- 76-1 Mackay, J.R.  
Pt. A 1976:  
Ice-wedges as indicators of recent climatic  
change, western Arctic coast, p. 233, 234.
- 76-1 French, H.M.  
Pt. A 1976:  
Pingo investigations, Banks Island, District  
of Franklin, p. 235-238.
- 76-1 Shilts, W.W. and Klassen, R.A.  
Pt. A 1976:  
Drift prospecting in the District of  
Keewatin - uranium and base metals (includes  
data from Boothia Peninsula), p. 255-257.
- 76-1 Blake, W., Jr.  
Pt. A 1976:  
Quaternary geochronology, Arctic Islands,  
p. 259-264.

Reports of Activities (cont'd)

Number

- 76-1 Stephen, W.J.  
Pt. A 1976:  
A reconnaissance study of the coastal  
processes on Banks Island, District of  
Franklin, p. 271, 272.
- 76-1 Kurfurst, P.J.  
Pt. A 1976:  
Assessment of terrain performance in the  
Mackenzie Valley and the Arctic Islands,  
p. 277-279.
- 76-1 Veillette, J.  
Pt. A 1976:  
Assessment of terrain performance, Somerset  
and Prince of Wales Islands, District of  
Franklin, p. 281, 282.
- 76-1 Mackay, J.R.  
Pt. A 1976:  
Ice segregation at depth in permafrost,  
p. 287, 288.
- 76-1 French, H.M.  
Pt. A 1976:  
Geomorphological process and terrain dis-  
turbance studies, Banks Island, District  
of Franklin, p. 289-292.
- 76-1 Baragar, W.R.A.  
Pt. A 1976:  
The Natkusiak basalts, Victoria Island,  
District of Franklin, p. 347-352.
- 76-1 Morgan, W.C., Okulitch, A.V., and Thompson,  
P.H.  
Pt. A 1976:  
Stratigraphy, structure and metamorphism  
of the west half of the Foxe Fold Belt,  
Baffin Island, p. 387-391.
- 76-1 Overton, A.  
Pt. A 1976:  
Ice reconnaissance on the Beaufort Sea,  
p. 419.
- 76-1 Hood, P.J. and Bower, M.E.  
Pt. A 1976:  
Arctic Ocean: low-level aeromagnetic  
profiles obtained in 1975, p. 421-424.
- 76-1 Trettin, H.P.  
Pt. A 1976:  
Geological investigations in northern  
Ellesmere Island: Introduction, p. 425-428.
- 76-1 Frisch, T.  
Pt. A 1976:  
Igneous and metamorphic rocks, northern  
Ellesmere Island, p. 429-430.
- 76-1 Trettin, H.P.  
Pt. A 1976:  
Reconnaissance of lower Paleozoic geology,  
Agassiz Ice Cap to Yelverton Bay, northern  
Ellesmere Island, p. 431-444.

Reports of Activities (cont'd)

Number

- 76-1 Mayr, U.  
Pt. A 1976:  
Upper Paleozoic succession in the Yelverton area, northern Ellesmere Island, District of Franklin, p. 445-448.
- 76-1 Wilson, D.G.  
Pt. A 1976:  
Studies of Mesozoic stratigraphy, Tanquary Fiord to Yelverton Pass, northern Ellesmere Island, District of Franklin, p. 449-451.
- 76-1 Wilson, D.G.  
Pt. A 1976:  
Eureka Sound and Beaufort Formations, Yelverton Bay, Ellesmere Island, District of Franklin, p. 453-456.
- 76-1 Judge, A.S., MacAulay, H.A., and Hunter, J.A.  
Pt. A 1976:  
Anomalous shallow seismic velocities in Mackenzie Bay, Northwest Territories, p. 481-484.
- 76-1 Kerr, J.Wm.  
Pt. A 1976:  
Geological investigations of Somerset Island and Boothia Peninsula (Operation Boothia), District of Franklin (an introduction), p. 491, 492.
- 76-1 Kerr, J.Wm. and de Vries, C.D.S.  
Pt. A 1976:  
Structural geology of Somerset Island, District of Franklin, p. 493-495.
- 76-1 Reinson, G.E., Kerr, J.Wm., and Stewart, W.D.  
Pt. A 1976:  
Stratigraphic field studies, Somerset Island, District of Franklin, p. 497-499.
- 76-1 Mitchell, R.H.  
Pt. A 1976:  
Kimberlites of Somerset Island, District of Franklin, p. 501-502.
- 76-1 Caulfield, D.D., Liron, A., Lewis, C.F.M., and Hunter, J.A.  
Pt. A 1976:  
Preliminary test results of the "BANCQES" through-ice subbottom acoustic profiling system at Tuktoyaktuk, Northwest Territories, p. 503-510.
- 76-1 Taylor, R.B.  
Pt. B 1976:  
Nearshore observations along the east coast of Melville Island, District of Franklin, p. 43-58.
- 76-1 Hills, L.V. and Bustin, R.M.  
Pt. B 1976:  
*Picea banksii* Hills and Ogilvie from Axel Heiberg Island, District of Franklin, p. 61-63.

Reports of Activities (cont'd)

Number

- 76-1 Jansa, L.F.  
Pt. B 1976:  
Lower Paleozoic Radiolaria-bearing limestones from the Baffin Island shelf, p. 99-105.
- 76-1 Lichti-Federovich, S.  
Pt. B 1976:  
A preliminary list of diatoms from sea floor sediments in Croker Bay, Devon Island, District of Franklin, p. 133-136.
- 76-1 Tarnocai, C.  
Pt. B 1976:  
Soils of Bathurst, Cornwallis, and adjacent islands, District of Franklin, p. 137-141.
- 76-1 Zoltai, S.C. and Woo, V.  
Pt. B 1976:  
Soils and vegetation of Somerset and Prince of Wales islands, District of Franklin, p. 143-145.
- 76-1 Day, T.J. and Gale, R.J.  
Pt. B 1976:  
Geomorphology of some Arctic gullies, Banks Island, District of Franklin, p. 173-185.
- 76-1 Day, T.J. and Anderson, J.C.  
Pt. B 1976:  
Observations on river ice, Thomsen River, Banks Island, District of Franklin, p. 187-196.
- 76-1 Blake, W., Jr.  
Pt. B 1976:  
Sea and land relations during the last 15 000 years in the Queen Elizabeth Islands, Arctic Archipelago, p. 201-207.
- 76-1 Dyke, A.S.  
Pt. B 1976:  
Tors and associated weathering phenomena, Somerset Island, District of Franklin, p. 209-216.
- 76-1 Matthews, J.V., Jr.  
Pt. B 1976:  
Insect fossils from the Beaufort Formation: geological and biological significance, p. 217-227.
- 76-1 Christie, R.L.  
Pt. B 1976:  
Tertiary rocks at Lake Hazen, northern Ellesmere Island, p. 259-262.
- 76-1 Pedder, A.E.H.  
Pt. B 1976:  
First records of five rugose coral genera from Upper Silurian rocks of the Canadian Arctic Islands, p. 287-293.



Reports of Activities (cont'd)

Number

76-1 Balkwill, H.R. and Hopkins, W.S., Jr.  
Pt. B 1976:  
Cretaceous stratigraphy, Hoodoo Dome,  
Ellef Ringnes Island, District of Franklin,  
p. 329-334.

MAPS: PRELIMINARY SERIES

Maps of this series are uncoloured to allow early publication. Maps included with reports have been omitted except where maps are available for out-of-print reports. Note that maps for some recently published reports can be obtained separately.

Number

3-1958 Blackadar, R.G.  
1958:  
Fury and Hecla Strait, District of  
Franklin, Northwest Territories (1 in to  
8 miles).

4-1958 Blackadar, R.G.  
1958:  
Foxe Basin North, District of Franklin,  
Northwest Territories (1 in to 8 miles).  
(Lower Paleozoic geology superseded by  
Map 1242A and by Maps 1406A, 1407A, and  
Fig. 16 of Bull. 251).

29-1958 Davison, W.L.  
1959:  
Geology, Lake Harbour, Baffin Island,  
District of Franklin, N.W.T. (1 in to 1  
mile).

55-1959\* Blackadar, R.G.  
1960:  
Geology, Hobart Island, District of  
Franklin, N.W.T. (1 in to 4 miles).

9-1962 Christie, R.L.  
1962:  
Geology, Alexandra Fiord, Ellesmere  
Island, District of Franklin (1 in to 4  
miles).

12-1962 Christie, R.L.  
1962:  
Geology, southeastern Ellesmere Island,  
District of Franklin (1 in to 4 miles).

39-1962 Thorsteinsson, R. and Kerr, J.Wm.  
1963:  
Selected areas of Ellesmere Island,  
District of Franklin (1 in to 4 miles).

30-1963 Douglas, R.J.W. and MacLean, B.  
1963:  
Geology of the Yukon, Northwest Territories  
and Arctic Islands (1:3 000 000).

Maps: Prelim. Ser. (cont'd)

Number

25-1967 Thorsteinsson, R. and Kerr, J.Wm.  
1967:  
Geology, Cornwallis Island, District of  
Franklin (1 in to 4 miles); with Paper  
67-64. (Map available; Paper 67-64 out  
of print).

4-1968 Stott, D.F.  
1968:  
Geology, Ellef Ringnes Island, District  
of Franklin (1 in to 4 miles); with  
Paper 68-16. (Map available; Paper 68-16  
out of print).

10-1968 Kerr, J.Wm.  
1968:  
Geology, southwestern Ellesmere Island,  
District of Franklin (North Half)  
(1:125 000).

10-1968 Kerr, J.Wm.  
1968:  
Geology, southwestern Ellesmere Island,  
District of Franklin (South Half)  
(1:250 000).

MAPS: MULTICOLOURED "A" SERIES

Maps of this series (with some exceptions) are printed in several colours as 'final' publications. Maps included with reports have been omitted except where maps are available for out-of-print reports. Note that maps for some recently published reports can be obtained separately.

Number

1098A - 1103A  
Fortier, Y.O., *et al.*  
1963:  
Maps of Operation Franklin (1 in to 8  
miles); with Memoir 320. (Maps available;  
Mem. 320 out of print).

1135A Thorsteinsson, R. and Tozer, E.T.  
1962:  
Geology, Banks, Victoria, and Stefansson  
Islands, District of Franklin (1:1 000 000);  
with Memoir 330. (Map available; Mem.  
330 out of print).

1142A Tozer, E.T. and Thorsteinsson, R.  
1964:  
Geology, western Queen Elizabeth Islands,  
District of Franklin (1 in to 8 miles);  
with Memoir 332. (Map available; Mem.  
332 out of print).

1205A Blackadar, R.G.  
1969:  
Geology, Nottingham, Salisbury, and Mill  
Islands, District of Franklin (1 in to 4  
miles).

\* Out of Print

Maps, Multicol. "A" Ser. (cont'd)

Number

Blackadar, R.G., Davison, W.L., and  
Trettin, H.P.; uncoloured series:

- 1235A 1968:  
Milne Inlet, District of Franklin (1 in  
to 4 miles).
- 1236A 1968:  
Navy Board Inlet, District of Franklin  
(1 in to 4 miles).
- 1237A 1968:  
Arctic Bay - Cape Clarence, District of  
Franklin (1 in to 4 miles).
- 1238A 1968:  
Moffet Inlet - Fitzgerald Bay, District  
of Franklin (1 in to 4 miles).
- 1239A 1967:  
Phillips Creek, District of Franklin  
(1 in to 4 miles).
- 1240A 1967:  
Agu Bay - Easter Cape, District of  
Franklin (1 in to 4 miles).
- 1241A 1967:  
Berlinguet Inlet - Bourassa Bay, District  
of Franklin (1 in to 4 miles).
- 1242A 1967:  
Erichsen Lake, District of Franklin  
(1 in to 4 miles) (Lower Paleozoic geology  
revised by H.P. Trettin in Fig. 16, Bull.  
251).
- 1246A Brown, R.J.E.  
1967:  
Permafrost in Canada (1 in to 120 miles).
- 1298A† Thorsteinsson, R.  
1971:  
Geology, Slidre Fiord, District of  
Franklin (1:50 000).
- 1299A† Thorsteinsson, R.  
1971:  
Geology, Middle Fiord, District of  
Franklin (1:250 000).
- 1300A† Thorsteinsson, R.  
1972:  
Geology, Eureka Sound South, District of  
Franklin (1:250 000).
- 1301A† Thorsteinsson, R.  
1971:  
Geology, Strand Fiord, District of  
Franklin (1:250 000).

Maps, Multicol. "A" Ser. (cont'd)

Number

- 1302A† Thorsteinsson, R.  
1972:  
Geology, Eureka Sound North, District of  
Franklin; (1:250 000).
- 1303A† Thorsteinsson, R.  
1971:  
Geology, Haig-Thomas Island, District of  
Franklin (1:250 000).
- 1304A† Thorsteinsson, R.  
1972:  
Geology, Glacier Fiord, District of  
Franklin (1:250 000).
- 1305A† Thorsteinsson, R. and Trettin, H.P.  
1972:  
Geology, Cape Stallworthy, District of  
Franklin (1:250 000).
- 1306A† Thorsteinsson, R. and Trettin, H.P.  
1971:  
Geology, Tanquary Fiord, District of  
Franklin (1:250 000).
- 1307A† Thorsteinsson, R.  
1971:  
Geology, Strathcona Fiord, District of  
Franklin (1:250 000).
- 1308A† Thorsteinsson, R.  
1972:  
Geology, Cañon Fiord, District of Franklin  
(1:250 000).
- 1309A† Thorsteinsson, R. and Trettin, H.P.  
1972:  
Geology, Otto Fiord, District of Franklin  
(1:250 000).
- 1310A† Thorsteinsson, R. and Trettin, H.P.  
1972:  
Geology, Bukken Fiord, District of  
Franklin (1:250 000).
- 1311A† Thorsteinsson, R.  
1971:  
Geology, Greely Fiord West, District of  
Franklin (1:250 000).
- 1312A† Thorsteinsson, R.  
1972:  
Geology, Baumann Fiord, District of  
Franklin (1:250 000).
- 1348A† Thorsteinsson, R. and Kerr, J.Wm.  
1972:  
Geology, Greely Fiord East, District of  
Franklin (1:250 000).
- 1357A Kerr, J.Wm.  
1973:  
Geology, Sawyer Bay, District of Franklin  
(1:250 000).

† Can be obtained as a folio of maps to accompany Bull. 224.

Number

- 1358A Kerr, J.Wm.  
1973:  
Geology, Dobbin Bay, District of Franklin  
(1:250 000).
- 1359A Kerr, J.Wm.  
1973:  
Geology, Kennedy Channel and Lady  
Franklin Bay, District of Franklin  
(1:250 000).

- No. 1 of the Economic Geology Series is a general review, with tectonic syntheses, of the geology of Canada; factual data are summarized, and economic and scientific interpretations are provided.
- 3rd\* Armstrong, J.E.  
1947:  
The Arctic Archipelago *in* Geology and  
Economic Minerals of Canada, p. 311-324.
- 4th\* Fortier, Y.O.  
1957:  
The Arctic Archipelago *in* Geology and  
Economic Minerals of Canada, C.H. Stockwell,  
ed., p. 393-442.
- 5th\* Thorsteinsson, R., and Tozer, E.T.  
1970:  
Geology of the Arctic Archipelago *in* Geology  
and Economic Minerals of Canada, R.J.W.  
Douglas, ed., p. 547-590.

ANNUAL AND SUMMARY REPORTS

The Annual Report Series was published between 1885 and 1907. Summary Reports at first were included as parts of each Annual Report volume, but later were published as a distinct series, until discontinued in 1933.

Date

- 1886\* Dawson, G.M.  
Pt. R 1887:  
Notes to accompany a geological map of the  
northern portion of the Dominion of Canada,  
east of the Rocky Mountains. (Report and  
Map 255).
- 1915\* Anderson, R.M.  
1916:  
Canadian Arctic Expedition 1915, p. 220-236.
- 1915\* O'Neill, J.J.  
1916:  
Geological reports, Canadian Arctic Expe-  
dition; (c) along Arctic coast between  
Chantry Island in Dolphin and Union Strait,  
and Keats Point, p. 239-241.
- 1925\* Weeks, L.J.  
Pt. C 1927:  
The geology of parts of eastern Arctic  
Canada, p. 136-141.
- 1927\* Weeks, L.J.  
Pt. C 1928:  
Cumberland Sound area, Baffin Island.  
(Report and Map 219A).

OPEN FILE REPORTS

The descriptions below are abstracted from fuller, published descriptions, which can be found in O.F. 308.

- O.F. 15: Seismic data, Polar Continental Shelf  
Project; includes one short reflection  
profile in Deer Bay, Ellef Ringnes I.  
Interpretations have been published in  
journals and GSC papers. Data on micro-  
film.
- O.F. 58: Side scan sonar, echo sounding, and  
shallow seismic data from Beaufort Sea;  
also, seismic reflection data from west  
side of Mackenzie Bay. CSS *Hudson*,  
1970; GSC *Richardson*, 1970. Microfilm.
- O.F. 60: Gravity, total magnetic field, and mag-  
netic anomaly (IGRF) data, not corrected,  
from Beaufort Sea. CSS *Hudson*, 1970.  
Computer printout.
- O.F. 66: Geology of Prince of Wales and adjacent  
small islands. Compiled by R.L. Christie  
from reconnaissance field work by R.L.  
Christie and W.W. Nassichuk in 1962 and  
by R.L. Christie, J.W. Kerr, and R.  
Thorsteinsson in 1970. (Maps 1:125 000).
- O.F. 91: Side scan sonar and echo sounding data,  
Beaufort Sea; nearshore between west  
side of Mackenzie Bay and Toker Point.  
Microfilm.
- O.F. 94: List of published measured lithologic  
sections in the Canadian Arctic Islands,  
compiled by K.J. Roy (list and index  
map; sections measured and described by  
officers of the Geological Survey and by  
J.C. Troelsen prior to 1971).

SEPARATE REPORTS

Author

- Low, A.P.\*  
1906: The cruise of the Neptune: Report on the  
Dominion Government expedition to Hudson  
Bay and the Arctic Islands on board the  
D.G.S. Neptune, 1903-04; Government  
Printing Bureau, Ottawa. (Report and  
Map 906; also Separate Report 905, same  
title).

\* Out of Print

## Open File Reports (cont'd)

Number

- O.F. 126: Thickness of Recent mud in Beaufort Sea, Demarcation Point to Cape Bathurst. Map, 1:500 000. CHS *Parizeau*, 1970-71; CHS *Baffin*, 1970.
- O.F. 139: Geological maps of parts of the Canadian Arctic Archipelago: Prince Alfred (NTS 59B), Resolute (58F), Baillie-Hamilton Island (58G), Lowther Island (68E), and McDougall Sound (68H) map-areas (maps 1:125 000, legend, notes), compiled by R. Thorsteinsson.
- O.F. 159: Geological map of Amund Ringnes and Haig-Thomas Islands, District of Franklin (parts of 59C, 59F, 69D, and 69E) (1:125 000), by H.R. Balkwill, K.J. Roy, W.V. Sliter, and W.S. Hopkins, Jr. (Maps, legend, and table of formations).
- O.F. 174: Preliminary draft, Eureka Sound and Robeson Channel map-sheets [NTS 560, 340, 120 (part)], 1:1 million geological atlas series, compiled by H.P. Trettin; includes geological compilation, index map, legend, tectonic correlation charts, map showing structural divisions, map showing regional tectonic setting, and descriptive notes (15 p.).
- O.F. 202: List of selected ERTS (Earth Resources Technology Satellite) images; collection of good quality images with 0-5% cloud cover at the Geological Survey of Canada; 600 images listed, covering about 80% of Canada.
- O.F. 204: Maps, geological cross-sections, and notes from interpretation of seismic reflection data, Lancaster Sound; three maps (thicknesses, bedrock and unconsolidated sediment), scale 1:100 000, and two cross-sections; area between longitudes 86°15'W and 90°00'W; CSS *Baffin*, 1973. See Lewis, Horsman, and Ross in GSC Paper 74-1A, p. 251, 252. Microfilm or paper copy.
- O.F. 226: Unedited report on regional organic metamorphism in Mesozoic strata of the Sverdrup Basin; data derived from gas from drill cuttings; organic geochemistry laboratory investigation to delineate the "oil window" or zone of oil generation.
- O.F. 231: List of information on suites of macrofossils, microfossils, palynological slides, petrographic thin sections, and analytical reports from wells drilled in northern Canada. The original material is available for examination (at I.S.P.G., Calgary) upon written request for an appointment.

## Open File Reports (cont'd)

Number

- O.F. 245: Paleontological reports with biostratigraphic zonation for three wells drilled in the Arctic Islands: Elf Cape Norem A-80, Mackenzie King I.; Panarctic Hoodoo Dome H-37, Ellef Ringnes I.; and Elf Jameson Bay C-31, Prince Patrick I. (Studies done under contract for the Geological Survey of Canada).
- O.F. 246: Geochemical data from analyses of canned drill cuttings from 14 wells in the Arctic Islands, by R.L. Snowdon; collection interval 50 feet; file consists of magnetic tape No. 1019 and 4 tables. References to analytical procedures available.
- O.F. 251: The geology of the Beaufort-Mackenzie Basin; by C.J. Yorath, D.W. Myhr, and F.G. Young; stratigraphy, lithology, structural history, and prospects for additional hydrocarbon discoveries.
- O.F. 252: Terrain classification and evaluation - eastern Melville I., N.W.T.; preliminary drafts of photomosaic maps on three sheets, with legends, explanatory notes, and an encyclopaedic text; Sabine Peninsula, Rea Point - Weatherall Bay, and Sabine Bay - Skene Bay map-areas, scale 1:125 000, NTS 78A, 79A, 79B, and 78G, part. Data on: morphology and relief, drainage, surface materials, vegetation, mammals, and birds; evaluation of ground ice, engineering properties, trafficability, and sensitivity to both travel and trenching; legends compiled by D.M. Barnett, S.A. Edlund, L.A. Dredge (all G.S.C.), and D.C. Thomas and L.S. Prevett (Canadian Wildlife Service); geological text by D.M. Barnett and L.A. Dredge; botanical text by S.A. Edlund; wildlife text by D.C. Thomas and L.S. Prevett.
- O.F. 253: Upper Jurassic - Lower Cretaceous dinoflagellate assemblages from Arctic Canada; by W.W. Brideaux (G.S.C.) and M.J. Fisher, Robertson Research International; taxonomy, biostratigraphy, and geographic occurrence of an Oxfordian - Berriasian dinoflagellate cyst assemblage.
- O.F. 255: Stratigraphy and sedimentology of Paleozoic formations in the vicinity of Prince Alfred Bay, Devon Island, N.W.T., by D.W. Morrow and J.Wm. Kerr.
- O.F. 256: Additions and revisions of O.F. 231 (Information from wells drilled in northern Canada).

## Open File Reports (cont'd)

Number

- O.F. 265: Surficial materials and biophysical regions, eastern Queen Elizabeth Islands (Part I): maps with legends for Baumann Fiord and Graham Island map-areas (NTS 49C, 59D). Maps showing surficial material compiled by D.A. Hodgson; maps showing biophysical regions compiled by D.A. Hodgson and S.A. Eklund. Included are comments on ground ice, traffic-ability, and sensitivity to disturbance.
- O.F. 278: Geological map of Cornwall Island, District of Franklin (NTS 59C, 59D, parts); scale 1:62 500; structural cross-section at scale 1:125 000.
- O.F. 280: Aeromagnetic survey data - Labrador Sea, Baffin Bay, and the North Atlantic Ocean; cooperative project, National Aeronautical Establishment and Geological Survey of Canada; total field magnetic data recorded on digital magnetic tape; low-level (usually 1000 ft) profiles; locations of profiles published in various reports by P. Hood and M. Bower, e.g. GSC Paper 73-1A, p. 84-85.
- O.F. 285: Surficial geology and geomorphology, Boothia Peninsula and Simpson Peninsula, N.W.T. (NTS 57A-G; 58D, E, G): 8 photomosaic maps, scale 1:125 000, by A.N. Boydell, K.A. Drabinsky, and J.A. Nettekville. Data on surficial materials, morphology, drainage, and permafrost features, with comments on the distribution of materials.
- O.F. 287: Geochemical data from analyses of canned drill cuttings from wells in the Arctic Islands, mainland Northwest Territories, and Yukon, by L.R. Snowdon; stored on magnetic tape. Tape characteristics, card format, and parameters provided; analytical procedures described in GSC Paper 72-36 and in Bull. Can. Petrol. Geol., v. 23, p. 131-148. Copies not available for examination, but for sale only.
- O.F. 297: Paleontological reports with biostratigraphical zonations on wells drilled in Arctic Canada; studies done under contract for the Geological Survey of Canada. Micropaleontology, palynology and stratigraphy of (among other, mainland wells): Panarctic Homestead Hecla J-60; Panarctic Amund Central Dome H-40; Elf Wilkins E-60; Sun KR Panarctic Skybattle Bay C-15.
- O.F. 307: Geology, Penrhyn Group (southwest limit of Foxe Fold Belt), Melville Peninsula, N.W.T.; 14 maps, scale 1:50 000; NTS 46K, N, O; by J.R. Henderson, J.E. Reesor, A.N. Lecheminant, I. Hutcheon, and A. Miller.

## Open File Reports (cont'd)

Number

- O.F. 308: Open File Index, 1967-1975, compiled by W.H. Eyre. Full description of each file, with examination points and/or reproduction firm for each file listed.
- O.F. 343: Marine geophysical data from Baffin Bay north of 70°N; gravity, magnetic, and bathymetric data are sorted geographically and stored on magnetic tape. The digital data are available in several formats at the Computer Science Centre, 588 Booth Street, Ottawa.
- O.F. 354: Results of analyses on rock specimens from the Hazen, Cape Phillips, Imina and Eids Formations and from undivided Allen Bay and Read Bay Formations in the Cañon Fiord region of Ellesmere Island, Arctic Canada, by H.P. Trettin. Included are comments on analytical methods used, a location map, and notes on the age and thickness of the stratigraphic sections represented. This report supplements Bull. 272 (in press).
- O.F. 357: Surficial geology and geomorphology, Somerset, northern Prince of Wales and adjacent islands, by J.A. Nettekville, A.S. Dyke, and R.D. Thomas. Photomosaic maps, scale 1:125 000, showing distribution and morphology of surficial materials. An extended legend contains the following headings: materials, landform origin and topography, drainage, thickness of active layer, and ground ice. Blackline copies available.

AGE DETERMINATIONS OF THE  
GEOLOGICAL SURVEY OF CANADAK-Ar isotopic ages

Potassium-argon age measurements are carried out in the laboratories of the Geological Survey of Canada and are reported, with pertinent data and geological interpretation, annually in the Papers series. The age determination laboratory numbers (preceded by 'GSC' in the following list) are referred to the officer providing the interpretation.

GSC Paper No.

- 60-17 Report 1 (1960)  
Blackadar, R.G., GSC 59-15; p. 10.
- 62-17 Report 3 (1963)  
Christie, R.L., GSC 61-49, 61-53; p. 30, 33.  
Davison, W.L., GSC 61-52; p. 32.  
Stockwell, C.H., GSC 61-50, 61-51; p. 31.  
Trettin, H.P., GSC 61-48; p. 30.

## Age Determinations (cont'd)

GSC Paper No.

- 63-17 Report 4 (1963)  
Blackadar, R.G., GSC 62-85, 62-86; p. 55, 56.  
  
Larochelle, A., and Black, R.F., GSC 62-87A, 62-87B; p. 56, 57.  
  
Thorsteinsson, R., GSC 62-83, 62-84; p. 55.
- 64-17 Report 5 (1965)  
Pt. 1 Blackadar, R.G., GSC 63-17, 63-18; p. 24.  
  
Fahrig, W.F., GSC 63-19, 63-20; p. 25.  
  
Trettin, H.P., GSC 63-21, 63-22, 63-23; p. 26-29.
- 65-17 Report 6 (1966)  
Blackadar, R.G., GSC 64-29 to 64-36; p. 26-30.  
  
Heywood, W.W., 64-28; p. 26.
- 66-17 Report 7 (1967)  
Fahrig, W.F., GSC 65-57, 65-58, 65-59; p. 52, 53.  
  
Kerr, J.Wm., GSC 65-60, 65-61; p. 53, 54.  
  
Description, but no interpretation available; GSC 65-52 to 65-56; p. 50-52.
- 67-2 Report 8 (1968)  
Pt. A Blackadar, R.G., GSC 66-66 to 66-70; p. 61-64.  
  
Frisch, T., GSC 66-61 to 66-64; p. 57-59.  
  
Trettin, H.P., GSC 66-65; p. 60.
- 69-2 Report 9 (1970)  
Pt. A Fahrig, W.F., GSC 67-53, 67-54; p. 31, 32.  
  
Frisch, T., GSC 67-50 to 67-52; p. 30, 31.  
  
Jackson, G.D., GSC 67-55 to 67-63; p. 32-36.  
  
Taylor, F.C., GSC 67-64, p. 36.
- 71-2 Report 10 (1972)  
Jackson, G.D., GSC 70-51, 70-68; p. 34-41.
- 73-2 Report 11 (1973)  
Fahrig, W.F., GSC 72-33 to 38; p. 28-30.
- 74-2 Report 12 (1974)  
Frisch, T., GSC 73-64, 65; p. 22.  
  
Jackson, G.D., GSC 73-67 to 72; p. 23-25.  
  
Stockwell, C.H., GSC 73-73; p. 25.  
  
Trettin, H.P., GSC 73-66; p. 22, 23.
- 75-2 Not issued.

## Age Determinations (cont'd)

GSC Paper No.Radiocarbon dates

Carbon<sup>14</sup> ages are determined in the laboratories of the Geological Survey of Canada. Early lists of ages (Lists I to VI) were published first in the journal Radiocarbon and were reprinted as GSC Papers with new pagination. Lists VII to XI were reprinted from Radiocarbon with the same pagination. List XII and later lists were published directly by the Geological Survey of Canada. The age determination laboratory numbers (preceded by 'GSC' in the following list) are referred to the officer providing the interpretation.

- 63-21 Radiocarbon Dates I and II (1963) (Radiocarbon, v. 4, 1962, p. 13-16; v. 5, 1963, p. 39-55).  
Fyles, J.G., GSC-10, 12, 51; p. 9.  
  
Fyles, J.G., GSC-65, 105; p. 30.
- 64-40 Radiocarbon Dates III (1964) (Radiocarbon, v. 6, 1964, p. 167-181).  
Craig, B.G., GSC-136, 150, 144, 145, 123, 135; p. 9-14.  
  
Fyles, J.G., GSC-146, 140, 118, 170, 175, 129, 111, 134, 113, 139, 149; p. 10-13.  
  
Henoach, W.E.S., GSC-154, p. 13.
- 65-4 Radiocarbon Dates IV (1965) (Radiocarbon, v. 7, 1965, p. 24-46).  
Blake, W., Jr., GSC-164, 165, 166, 178, 179, 201, 180, 212, 182, 191, 223, 167; p. 17-19.  
  
Craig, B.G., GSC-235, 241, 189, 183, 239, 184, 190, 188; p. 17-21.  
  
Fyles, J.G., GSC-240, 222, 238, 255, 269, 268, 243, 254, 244; p. 15-20.  
  
Harrison, D.A.H., GSC-209, p. 22.
- 66-48 Radiocarbon Dates V (1966) (Radiocarbon, v. 8, 1966, p. 96-127).  
Blake, W., Jr., GSC-378, 401, 233, 386, 387; p. 27, 28.  
  
Craig, B.G., GSC-390, 307, 304, 306, 392, 450, 319; p. 25-27.  
  
Fyles, J.G., GSC-355, 488, 489, 266, 367; p. 29.  
  
Østrem, G., GSC-122, p. 25.
- 67-2 Radiocarbon Dates VI (1967) (Radiocarbon, Pt. B v. 9, 1967, p. 156-197).  
Andrews, J.T., GSC-564, 557, 259, 427, 528; p. 30, 31.

## Age Determinations (cont'd)

GSC Paper No.

- 67-2  
Pt. B Blake, W., Jr., GSC-344, 594, 224, 645,  
646, 302, 303, 610, 560, 468, 426,  
414, 425, 591, 433, 504, 596, 463,  
463-2, 532, 462, 467, 464, 503, 498,  
561, 465, 553, 466, 322, 353, 250,  
402, 253, 377, 249, 251; p. 21-35.
- Craig, B.G., GSC-601, 603, 597, 328, 616,  
617, 652, 600; p. 23, 32, 33.
- Falconer, G., GSC-654; p. 32.
- Fyles, J.G., GSC-320, 356, 357, 315, 282,  
278, 363, 339, 279, 324, 422, 262,  
260, 352, 323, 381; p. 35-38.
- Hattersley-Smith, G., GSC-374, 376, 373;  
p. 39.
- Matthews, B., GSC-533; p. 28.
- Smith, J.E., GSC-599, 556; p. 32.
- 68-2 Radiocarbon Dates VII (1968) (Radiocarbon  
Pt. B v. 10, no. 2, 1968, p. 207-245).  
Andrews, J.T., GSC-827, 813; p. 236.
- Andrews, J.T. and Buckley, J.T.; GSC-707,  
739; p. 237.
- Barnett, D.M., GSC-814, 583, 584, 631;  
p. 237, 238.
- Blake, W., Jr., GSC-708, 722, 724, 726,  
692, 738, 721; p. 236-240.
- Fyles, J.G., GSC-727, 787, 667, 664, 786,  
665; p. 241, 242.
- Hattersley-Smith, G., GSC-745; p. 239.
- Kupsch, W.O., GSC-452; p. 239.
- Pissart, A., GSC-854, 764; p. 242.
- Smith, J.E., GSC-630, 633; p. 238.
- 69-2 Radiocarbon Dates VIII (1969) (Radiocarbon,  
Pt. B v. 11, no. 1, p. 22-24).  
Maxwell, M.S., GSC-794, 820; p. 38.
- Taylor, W.E., GSC-701, 702, 703, 640, 658,  
713, 656, 650, 651, 669; p. 37-40.
- 70-2 Radiocarbon Dates IX (1970) (Radiocarbon,  
Pt. B v. 12, no. 1, 1970, p. 46-86).  
Barr, W., GSC-991, 891; p. 82.
- Hattersley-Smith, G., GSC-1025; p. 83.
- King, C.A.M., GSC-911; p. 82.
- Müller, F., GSC-637, 432; p. 83.

## Age Determinations (cont'd)

GSC Paper No.

- 70-2 (second report) Radiocarbon Dates X (1970)  
Pt. B (Radiocarbon, v. 12, no. 2, 1970, p. 472-485).  
Dekin, A.A., Jr., GSC-1051; p. 483.
- Maxwell, M.S., GSC-849; p. 484.
- 71-7 Radiocarbon Dates XI (1971) (Radiocarbon,  
v. 13, no. 2, 1971, p. 255-324).  
Barnett, D.M., GSC-943; p. 309.
- Blake, W., Jr., GSC-516, 575, 1072, 1128,  
907, 865, 879, 864, 845, 873, 835,  
833, 1007, 928, 986, 826, 921, 839,  
823, 863, 1225, 1080, 1047, 1078,  
1148, 1320, 840, 619, 1193, 783, 1123,  
1171; p. 304-317.
- Feyling-Hanssen, R.W., GSC-796; p. 309.
- Fyles, J.G., GSC-517, 690; p. 304.
- Hattersley-Smith, G., GSC-1206; p. 315.
- Hodgson, D.A., GSC-1094, 1163, 1071, 1090,  
1153, 1215; p. 309-311.
- Hodgson, D.A. and Haselton, G.M., GSC-1064;  
p. 310.
- Kerfoot, D.E., GSC-513; p. 304.
- Kerfoot, D.E. and Fyles, J.G., GSC-562;  
p. 305.
- Müller, F., GSC-1138; p. 316.
- St.-Onge, D.A., GSC-999; p. 316.
- 72-7 Radiocarbon Dates XII (1972).  
Dekin, A.A., Jr., GSC-1382; p. 22.
- 73-7 Radiocarbon Dates XIII (1973)  
Andrews, J.T., GSC-1507; p. 38.
- Barnett, D.M., GSC-1624, 1636, 1609, 1437;  
p. 44, 45.
- Blake, W., Jr., GSC-1903, 1606, 1704, 1699,  
1764, 1709, 0545, 0591, 1713, 1463,  
1547, 1714, 1410, 1512, 1537, 1352,  
1550, 1378, 1443, 1558, 1572, 1348,  
1571, 1434, 1603, 1538, 1377, 1752;  
p. 37-45.
- Fyles, J.G., GSC-1478; p. 46.
- Miller, G.H., GSC-1638; p. 38.
- Miller, G.H. and Andrews, J.T., GSC-1845;  
p. 38.
- Shearer, J.M., GSC-1509, 1511; p. 46.

## Age Determinations (cont'd)

GSC Paper No.

- 74-7 Radiocarbon Dates XIV (1975)  
Blake, W., Jr., GSC-1899; p. 9.  
  
Hattersley-Smith, G., GSC-1770; p. 9.  
  
McGhee, R., GSC-1931, 1940, 1949; p. 9.
- 75-7 Radiocarbon Dates XV (1975)  
Andrews, J.T., GSC-1969, 2083; p. 20.  
  
Blake, W., Jr., GSC-824, 881, 964-2, 860,  
2082, 848, 1448, 1518, 882, 1415,  
1488, 1490, 858, 866, 874, 178-2,  
1879, 1873, 1878, 1887, 1902, 784,  
1566, 1854, 165-2, 811; p. 21-26.  
  
Hodgson, D.A., GSC-1964; p. 21.

REPORTS IN SCIENTIFIC JOURNALS OTHER THAN THOSE OF  
THE GEOLOGICAL SURVEY OF CANADA

Scientific and technical journals 'outside' the Geological Survey of Canada are an important avenue for publication by officers of the Survey. The syntheses, reviews, and certain data for the Arctic Islands in these journals complement the material of the formal reports of the branch.

Papers 66-4, 67-4, etc., containing abstracts as noted in the following entries, are Geological Survey of Canada Papers 66-4, etc.

Author

- Agterberg, F.P. Hills, L.V., and Trettin, H.P.  
1967: Paleocurrent trend analysis of a delta in the Bjerne Formation (Lower Triassic) of northwestern Melville Island, Arctic Archipelago; *J. Sediment. Petrol.*, v. 37, p. 852-862. Abs., Paper 68-4, p. 3.
- Andrews, J.T. and Barnett, D.M.  
1972: Analysis of strandline tilt directions in relation to ice centers and postglacial crustal deformation, Laurentide ice sheet; *Geog. Annaler*, v. 54A, no. 1, p. 1-11.
- Anthony, E.H. and Vilks, G.  
1973: Asking micro-organisms to classify their environment *in* *Estuarine Microbial Ecology*, L.H. Stevenson and R.R. Colwell, ed., Univ. South Carolina Press, p. 269-280. Abs., Paper 74-4, p. 29; example from East Bay, Mackenzie King Island.
- Appleton, K.P., Keen, C. and Barrett, D.  
1975: Magnetic lineations in Baffin Bay and their significance to the evolution of the Canadian Arctic. Abs., Int. Union of Geodesy and Geophys., 16th Gen. Assembly, Grenoble, France, Abs., p. 62.

## Other Scientific Journals (cont'd)

Author

- Balkwill, H.R.  
1974: Structure and tectonics of Cornwall Arch, Amund Ringnes and Cornwall Islands, Arctic Archipelago *in* *Symp. on the Geology of the Canadian Arctic*; *Geol. Assoc. Canada - Can. Soc. Petrol. Geol., Proceedings*, p. 39-62. Abs., Paper 74-4, p. 2.
- Balkwill, R.H., Roy, K.J., Hopkins, W.S., Jr., and Sliter, W.V.  
1974: Glacial features and pingos, Amund Ringnes Island, Arctic Archipelago; *Can. J. Earth Sci.*, v. 11, p. 1319-1325. Abs., Paper 75-4, p. 2.
- Barnes, C.R.  
1973: Ordovician conodont biostratigraphy of the Canadian Arctic *in* *Symp. on the Geology of the Canadian Arctic*; *Geol. Assoc. Can. - Can. Soc. Petrol. Geologists, Proceedings*, p. 221-240.
- Barnett, D.M.  
1970: Generator Lake, Baffin Island, N.W.T. and Tasiujaq Cove, Ekalugad Fiord, Baffin Island, N.W.T. 1968; *Can. Oceanographic Data Centre: Oceanogr. Data Record Ser. No. 1*, 62 p. Abs., Paper 71-4, p. 2.
- Barnett, D.M. and Holdsworth, G.  
1974: Origin, morphology, and chronology of sub-lacustrine moraines, Generator Lake, Baffin Island, N.W.T., Canada; *Can. J. Earth Sci.*, v. 11, p. 380-408. Abs., Paper 74-4, p. 3.
- Barrett, D.L.  
1966: Lancaster Sound shipborne magnetometer survey; *Can. J. Earth Sci.*, v. 3, p. 223-235.
- Barrett, D.L., Keen, C.E., Manchester, K.S., and Ross, D.I.  
1971: Baffin Bay - an ocean; *Nature*, v. 229, p. 551-553.
- Barrett, D.L. and Manchester, K.S.  
1969: Crustal structure in the Baffin Bay and Davis Strait region from magnetometer surveys (Abstract); *Trans. Am. Geophys. Un.*, v. 50, p. 135.
- Blackadar, R.G.  
1957: The Proterozoic stratigraphy of the Canadian Arctic Archipelago and northwestern Greenland; *Roy. Soc. Can., Special Pub. No. 2*, p. 93-100.
- 1958: Patterns resulting from glacier movements north of Foxe Basin, N.W.T.; *Arctic*, v. 11, no. 3, p. 157-165.



## Other Scientific Journals (cont'd)

Author

- Blake, W., Jr.  
 1970: Studies of glacial history in Arctic Canada. I. Pumice, radiocarbon dates, and differential postglacial uplift in the eastern Queen Elizabeth Islands; *Can. J. Earth Sci.*, v. 7, p. 634-664. Abs., Paper 71-4, p. 3.
- 1972: Climatic implications of radiocarbon-dated driftwood in the Queen Elizabeth Islands, Arctic Canada *in* Climatic changes in Arctic areas during the last ten thousand years, eds. Y. Vasari, H. Hyvarinen, and S. Hicks; 1971; *Acta Univ. Oul.*, Series A, *Scient. Rer. Nat.* no. 3, *Geol.* no. 1, p. 77-104. Abs., Paper 73-4, p. 6.
- 1973: Former occurrence of *Mytilus edulis* L. on Coburg Island, Arctic Archipelago; *Naturaliste Canadien*, v. 100, no. 1, p. 51-88. Abs., Paper 74-4, p. 3.
- 1974: Studies of glacial history in Arctic Canada; II, Interglacial peat deposits on Bathurst Island; *Can. J. Earth Sci.*, v. 11, p. 1025-1042. Abs., Paper 75-4, p. 2.
- 1975: Radiocarbon age determinations and post-glacial emergence at Cape Storm, southern Ellesmere Island, Arctic Canada; *Geogr. Ann. Ser. A*, v. 57, p. 1-71.
- 1975: Studies of glacial history in the Queen Elizabeth Islands, Canadian Arctic Archipelago; *Naturgeogr. Inst.*, Stockholms Univ., *Forskningsrapport* 21.
- 1976: Glacier ice cores, climate, and chronology around northern Baffin Bay (Abstract); *Am. Quat. Assoc.*, 4th Biennial meeting, Abs., p. 20, 21.
- Bolton, T.E.  
 1966: Some Late Silurian bryozoa from the Canadian Arctic Islands; *Paleontology*, v. 9, part 3, p. 517-522. Abs., Paper 67-4, p. 8.
- Brideaux, W.W.  
 1975: Status of Mesozoic and Tertiary dinoflagellate studies in the Canadian Arctic; *Am. Assoc. Stratigr. Palynol.*, *Contrib. Ser.* No. 4, p. 15-28.
- Bridgwater, D., Escher, A., Jackson, G.D., and Taylor, F.C.  
 1973: Development of the Precambrian Shield in West Greenland Labrador, and Baffin Island *in* Arctic Geology; *Am. Assoc. Petrol. Geologists*, *Mem.* 19, p. 99-116.
- Brown, I.C.  
 1951: Circular structure in the Arctic Islands; *Am. J. Sci.*, v. 249, p. 785-794.

## Other Scientific Journals (cont'd)

Author

- Buckley, D.E.  
 1971: Recent marine sediments of Lancaster Sound, District of Franklin; *Maritime Seds.*, v. 7, no. 3, p. 96-117. Abs., Paper 73-4, p. 7.
- Christie, R.L.  
 1972†: Central Stable Region *in* The Canadian Arctic Islands and Mackenzie Region, by R.L. Christie, D.G. Cook, W.W. Nassichuk, H.P. Trettin, and C.J. Yorath; XXIV International Geological Congress, Montreal, Canada, Guidebook, Excursion A-66, p. 40-87.
- 1972†: Quaternary Geology *in* The Canadian Arctic Islands and Mackenzie Region; XXIV International Geological Congress, Montreal, Canada, Guidebook, Excursion A-66, p. 131-137.
- 1974: Arctic Islands (geology, geomorphology, climate) *in* Enc. Britannica, 15th edition, Warren E. Preece, general ed., Helen Hemingway Benton, publ., p. 1115-1117.
- 1975: Canada - Arctic Archipelago *in* Enc. of World Geology, Pt. I: Western Hemisphere, R.W. Fairbridge, ed.; p. 145-156.
- Copeland, M.J.  
 1967: An occurrence of *Caryocaris* (Crustacea, Phyllocarida) from the Canadian Arctic; *J. Paleontol.*, v. 41, no. 5, p. 1193-1194. Abs., Paper 68-4, p. 14.
- Craig, B.G. and Fyles, J.G.  
 1965: Quaternary of Arctic Canada *in* Anthropogen Period in Arctic and Subarctic; *Trans. Scientific Research Institute of the Geology of the Arctic*, State Geological Committee, U.S.S.R., Moscow, v. 143, p. 5-33 (Russian with English Summary). Abs., Paper 66-4, p. 14.
- Davies, G.R.  
 1974: Submarine cementation, fracturing, and internal sedimentation in Pennsylvanian-Permian carbonate build-ups, Arctic Archipelago; *Am. Assoc. Petrol. Geologists*, *Ann. Meeting (Abs.)*, v. 1, p. 25.
- 1974: Paleozoic evaporites of the Canadian Arctic Archipelago; 4th Intern. Symp. on Salt, Houston, *Proc.* v. 1, p. 119-125.
- 1975: Penecontemporaneous slide and fill mega-structures in the upper Paleozoic slope-facies carbonates, Arctic Canada; *Am. Assoc. Petrol. Geologists*, *Ann. Meeting*, Abs., p. 17.
- 1975: Carbonate-evaporite facies relationships, upper Paleozoic of the Canadian Arctic Archipelago; *Am. Assoc. Petrol. Geologists*, *Ann. Meeting*, Abs., p. 17-18.

† Guidebook available at GSC publications office.

## Other Scientific Journals (cont'd)

Author

- Davies, G.R.  
1976: Early marine and later postburial cementation and diagenesis of Paleozoic carbonate rocks, Arctic Archipelago (Abs.); Bull. Am. Assoc. Petrol. Geologists, v. 60, p. 662-663.
- Davies, G.R. and Nassichuk, W.W.  
1972: Upper Paleozoic evaporites of the Sverdrup Basin, Arctic Canada (Abs.); Bull. Am. Assoc. Petrol. Geologists, v. 56, p. 612. Abs., Paper 72-4, p. 15.
- 1973: The hydrozoan? *Palaeoaplysina* from the upper Paleozoic of Ellesmere Island, Arctic Canada; J. Paleontol. v. 47, no. 2, p. 251-265. Abs., Paper 73-4, p. 13.
- 1973: Upper Paleozoic carbonate mounds of the Sverdrup Basin, Arctic Canada; Can. Soc. Petrol. Geologists - Geol. Assoc. Can., Symp. on Arctic Geology, Saskatoon, Progr. and Abs., p. 7.
- 1975: Subaqueous evaporites of the Carboniferous Otto Fiord Formation, Canadian Arctic Archipelago: a summary; Geology, v. 3, p. 273-278.
- Davidson, A.  
1972: Churchill Province *in* Variations in Tectonic Styles, R.A. Price and R.J.W. Douglas, eds.; Geol. Assoc. Can., Special Paper 11. (Includes Melville and Boothia Peninsulas and Baffin Island).
- Dixon, J., Hopkins, W.S., Jr., and Dixon, O.  
1973: Upper Cretaceous marine strata on Somerset Island, N.W.T.; Can. J. Earth Sci., v. 10, p. 1337-39. Abs., Paper 74-4, p. 11.
- Fahrig, W.F., Irving, E., and Jackson, G.D.  
1971: Paleomagnetism of the Franklin Diabase; Can. J. Earth Sci., v. 8, p. 455-467. Abs., Paper 72-4, p. 18.
- 1973: Test of nature and extent of continental drift as provided by a study of Proterozoic dike swarms of Canadian Shield *in* Arctic Geology; Am. Assoc. Petrol. Geologists, Mem. 19, p. 583-856.
- Fahrig, W.F. and Schwarz, E.J.  
1972: Additional paleomagnetic data on the Baffin diabase dikes and a revised Franklin pole; Can. J. Earth Sci., v. 10, p. 576-581.
- Falconer, R.K.H., Srivastava, S.P., and Johnson, G.L.  
1975: Movement of Greenland with respect to the European and North American plates (Abstract); Trans., Am. Geophys. Union, v. 56, p. 381.

## Other Scientific Journals (cont'd)

Author

- Ferrians, O.J., Jr., and Hobson, G.D.  
1973: Mapping and predicting permafrost in North America: a review, 1963-1973 *in* Permafrost: North American contribution; Second Intern. Conf. on Permafrost, Yakutsk, Siberia, 1973. Nat. Acad. Sci. p. 479-498.
- Fortier, Y.O.  
1955: Innuitian Region; Trans, Can. Inst. Mining Met., v. 58, p. 1-2.
- Fortier, Y.O. and Thorsteinsson, R.  
1953: The Parry Islands folded belt in the Canadian Arctic Archipelago; Am. J. Sci., v. 251, p. 259-267.
- Fortier, Y.O., McNair, A.H., and Thorsteinsson, R.  
1954: Geology and petroleum possibilities in Canadian Arctic Islands; Bull. Am. Assoc. Petrol. Geologists, v. 38, p. 2075-2107.
- Fortier, Y.O. and Morley, L.W.  
1956: Geological unity of the Arctic Islands; Trans. Roy. Soc. Can., v. 50, ser. III, p. 3-12.
- French, H.M.  
1970: Soil temperatures in the active layer, Beaufort Plain; Arctic, v. 23, p. 229-239.
- 1971: Ice cored mounds and patterned ground, southern Banks Island, western Canadian Arctic; Geog. Annaler, v. 53A, no. 1, p. 32-38.
- 1971: Slope asymmetry of the Beaufort Plain, northwest Banks Island, N.W.T., Canada; Can. J. Earth Sci., v. 8, p. 717-731.
- French, H.M.  
1974: Active thermokarst processes, eastern Banks Island, western Canadian Arctic; Can. J. Earth Sci., v. 11, p. 785-794.
- 1975: Man-induced thermokarst, Sachs Harbour airstrip, Banks Island, N.W.T.; Can. J. Earth Sci., v. 12, p. 132-144. Abs., Paper 75-4, p. 9.
- Fricker, P.E. and Trettin, H.P.  
1963: Pre-Mississippian succession of northernmost Axel Heiberg Island, Canadian Arctic Archipelago *in* Geology, No. 3, Axel Heiberg Island Research Reports, McGill University, Montreal.
- Fyles, J.G. and Blake, W., Jr.  
1965: Glaciation of the northwestern Canadian Arctic Islands *in* Intern. Assoc. Quat. Res. (INQUA); VII Intern. Congr., Abs., p. 156. Abs., Paper 66-4, p. 23.

## Other Scientific Journals (cont'd)

Author

- Grant, A.C.  
1975: Geophysical results from the continental margin off southern Baffin Island *in* Canada's Continental Margins and Offshore Petroleum Exploration; Can. Soc. Petrol. Geologists, Mem. 4, p. 411-431.
- Grant, A.C. and Manchester, K.S.  
1970: Geophysical investigations in the Ungava Bay - Hudson Strait region of northern Canada; Can. J. Earth Sci., v. 7, p. 1062-1076.
- Gregory, A.F., Morley, L.W., and Bower, M.E.  
1961: Airborne geophysical reconnaissance in the Canadian Arctic Archipelago; Geophysics, v. 26, p. 727-737.
- Gross, G.A.  
1966: The origin of high grade iron deposits on Baffin Island, N.W.T.; Can. Min. J., v. 87, no. 4, p. 111-114. Abs., Paper 67-4, p. 26.
- Heywood, W.W.  
1955: Arctic piercement domes; Trans. Can. Inst. Mining Met., v. 58, p. 27-32.
- Hills, L.V., Chi, B.I., and Sweet, A.R.  
1975: The genus *Ocksisporites* Chaloner; Rev. Palaeobot. Palynol., v. 19, p. 101-115. Abs., Paper 75-4, p. 27.
- Hills, L.V., Klovan, J.E., and Sweet, A.R.  
1974: *Juglans eocinerea* n. sp., Beaufort Formation (Tertiary), northwestern Banks Island, Arctic Canada; Can. J. Botany, v. 52, p. 65-90.
- Hills, L.V. and Ogilvie, R.T.  
1970: *Picea banksii* n. sp. Beaufort Formation (Tertiary), northwestern Banks Island, Arctic Canada; Can. J. Bot., v. 48, p. 457-464.
- Hills, L.V., Smith, R.E., and Sweet, A.R.  
1971: Upper Devonian megaspores, northeastern Banks Island, N.W.T.; Bull. Can. Petrol. Geol., v. 19, p. 799-811.
- Hobson, G.D.  
1962: Seismic exploration in the Canadian Arctic Islands; Geophysics, v. XXVII, no. 2, p. 253-273.
- Hobson, G.D. and Overton, A.  
1967: A seismic section of the Sverdrup Basin, Canadian Arctic Islands *in* Seismic Refraction Prospecting, A.W. Musgrave, ed.; p. 550-562, spec. volume by Soc. Explor. Geophys., Tulsa, Okla. Abs., Paper 68-4, p. 27.

## Other Scientific Journals (cont'd)

Author

- Hood, P. and Bower, M.E.  
1971: Low-level aeromagnetic surveys of the continental shelves bordering Baffin Bay and the Labrador Sea; Abs., Paper 71-4, p. 18.
- 1972: Aeromagnetic reconnaissance of the North Atlantic Ocean, Labrador Sea and Baffin Bay; Paper S9-45, 15th General Assembly, Int. Union of Geodesy and Geophys., Moscow, 1971. Abs., Paper 72-4, p. 22.
- 1973: Aeromagnetic reconnaissance of the Labrador Sea and Baffin Bay (Abs.); Soc. Explor. Geophys., Ann. Int. Meeting, v. 43, p. 23-24. Abs., Paper 74-4, p. 10.
- 1975: Aeromagnetic reconnaissance of Davis Strait and adjacent areas; Can. Soc. Petrol. Geologists, Mem. 4, p. 433-451.
- Hunter, J.A. and Hobson, G.D.  
1974: Seismic refraction method of detecting subsea bottom permafrost *in* The Coast and Shelf of the Beaufort Sea, J.C. Reed and J.E. Sater, eds.; Arct. Inst. of North America.
- Jackson, G.D.  
1966: Geology and mineral possibilities of the Mary River region, northern Baffin Island; Can. Min. J., v. 87, p. 57-61. Abs., Paper 67-4, p. 32.
- Jackson, G.D. and Taylor, F.C.  
1972: Correlation of major Aphebian rock units in the northeastern Canadian Shield; Can. J. Earth Sci., v. 9, p. 1650-1699. Abs., Paper 73-4, p. 35.
- Jackson, H.R., Keen, C.E. and Barrett, D.L. (in press): Geophysical studies on the eastern continental margin of Baffin Bay and in Lancaster Sound; Can. J. Earth Sci.
- Johnson, B., Calverley, A.E. and Pendlebury, D.C. (in press): Pleistocene Foraminifera from nearshore Canada *in* First Int. Symp. on Benthonic Foraminifera of Continental Margin, Part B., Pleistocene-Holocene Paleoecology and Biostratigraphy, C.T. Schafer and B.R. Pelletier, eds.; Maritime Sediments, Spec. Publ. no. 1 (B).
- Keen, C.E.  
1974: Some geophysical measurements on the northern shelf of Baffin Bay *in* Proceedings of the 1973 National Convention; Can. Soc. Explor. Geophys., Calgary, Canada. Abs., Paper 75-4, p. 14.
- Keen, C.E., and Barrett, D.L.  
1972: Seismic refraction studies in Baffin Bay: an example of a developing ocean basin; Geophys. J., v. 30, p. 253-272. Abs., Paper 73-4, p. 42.

## Other Scientific Journals (cont'd)

Author

- Keen, C.E. and Barrett, D.L.  
1973: Structural characteristics of some sedimentary basins in northern Baffin Bay; *Can. J. Earth Sci.*, v. 10, p. 1267-78. Abs., Paper 74-4, p. 13.
- Keen, C.E., Barrett, D.L., Manchester, K.S., and Ross, D.I.  
1972: Geophysical studies in Baffin Bay and some tectonic implications; *Can. J. Earth Sci.*, v. 9, p. 239-256.
- Keen, C.E. and Keen, M.J.  
1974: The continental margins of eastern Canada and Baffin Bay, in *Geology of Continental Margins*, C.A. Burk and C.L. Drake, eds.; Springer-Verlag, New York, p. 381-389. Abs., Paper 75-4, p. 13.
- Keen, C.E., Keen, M.J., Ross, D.I., and Lack, M.  
1974: Baffin Bay: small ocean basin formed by sea-floor spreading; *Bull. Am. Assoc. Petrol. Geologists*, v. 58, p. 1089-1108. Abs., Paper 75-4, p. 13.
- Keen, M.J., Loncarevic, B.D., and Ewing, G.N.  
1971: Continental margin of Eastern Canada: Georges Bank to Kane Basin in *The Sea*, A.E. Maxwell, ed.; John Wiley and Sons, New York, v. 4, Pt. 2, p. 251-291.
- Kerr, J.Wm.  
1967: Nares Submarine Rift Valley and the relative rotation of North Greenland; *Bull. Can. Petrol. Geol.*, v. 15, p. 483-520. Abs., Paper 68-4, p. 35.
- 1967: Devonian of the Franklinian Miogeosyncline and adjacent Central Stable Region in *International Symposium on the Devonian System*, D.H. Oswald, ed.; Alberta Soc. Petrol. Geol., Calgary, Alberta, v. 1, p. 677-692. Abs., Paper 68-4, p. 34.
- 1967: New nomenclature for Ordovician rock units of the eastern and southern Queen Elizabeth Islands, Arctic Canada; *Bull. Can. Petrol. Geol.*, v. 15, p. 91-113. Abs., Paper 68-4, p. 37.
- 1967: A submerged continental remnant beneath the Labrador Sea; *Earth and Planetary Sci. Letters*, v. 2, p. 283-289. Abs., Paper 68-4, p. 38.
- 1971: Geology of outstanding Arctic aerial photographs: 1. Cape Storm area, southern Ellesmere Island; *Bull. Can. Petrol. Geol.*, v. 18, p. 463-468. Abs., Paper 71-4, p. 24.
- 1972: Geology of outstanding Arctic aerial photographs: 2. Schei Summit area, central Ellesmere Island; *Bull. Can. Petrol. Geol.*, v. 20, p. 175-183. Abs., Paper 72-4, p. 25.

## Other Scientific Journals (cont'd)

Author

- Kerr, J.Wm.  
1975: Cape Storm Formation - a new Silurian unit in the Canadian Arctic; *Bull. Can. Petrol. Geol.*, v. 23, p. 67-83.
- 1976: Geology of outstanding Arctic aerial photographs, 3. Margin of Sverdrup Basin, Lyaal River, Devon Island; *Bull. Can. Soc. Petrol. Geol.*, v. 24, p. 139-153.
- Kerr, J.Wm. and Christie, R.L.  
1965: Tectonic history of Boothia uplift and Cornwallis fold belt, Arctic Canada; *Bull. Am. Assoc. Petrol. Geologists*, v. 49, p. 905-926. Abs., Paper 66-4, p. 32.
- Kerr, J.Wm., McGregor, D.C., and McLaren, D.J.  
1965: An unconformity between Middle and Upper Devonian rocks of Bathurst Island, with comments on Upper Devonian faunas and microfloras of the Parry Islands; *Bull. Can. Petrol. Geol.*, v. 13, p. 409-431. Abs., Paper 66-4, p. 33.
- Kerr, J.Wm. and Thorsteinsson, R.  
1971: Preliminary submission for Silurian-Devonian stratotype Canadian Arctic Archipelago; *Geol. Newsletter*, no. 4, p. 266-272. Abs., Paper 72-4, p. 25.
- Kerr J.Wm. and Trettin, H.P.  
1962: Mississippian rocks and the Mid-Paleozoic earth movements in the Canadian Arctic Archipelago; *Alberta Soc. Petrol. Geologists*, v. 10, p. 247-256.
- King, C.A.M. and Buckley, Jane T.  
1968: The analysis of stone size and shape in arctic environments; *J. Sediment. Petrol.*, v. 38, p. 200-214. Abs., Paper 68-4, p. 39.
- Kuc, M.  
1971: Additions to the arctic moss flora V: The role of mosses in plant succession and the development of peat on Fitzwilliam Owen Island (western Canadian Arctic); *Rev. Bryol. et Lichénol.*, v. 37, p. 931-939.
- 1973: Addition to the arctic moss flora. VI. Moss-flora of Masik River valley (Banks Island) and its relationship with plant formations and the postglacial history; *Rev. Bryol. et Lichénol.*, v. 39, p. 253-264.
- Kuc, M. and Hills, L.V.  
1971: Fossil mosses, Beaufort Formation (Tertiary), northwestern Banks Island, Western Canada Arctic; *Can. J. Botany*, v. 49, p. 1089-1094.
- Larochelle, A. and Black, R.F.  
1963: An application of palaeomagnetism in estimating the age of rocks; *Nature*, v. 198, p. 1260-1262 (on diabase near Isachsen, Ellef Ringnes I).

## Other Scientific Journals (cont'd)

Author

- Larochele, A., Black, R.F., and Wanless, R.K.  
1965: Paleomagnetism of the Isachsen diabasic rocks; *Nature*, v. 208, no. 5006, p. 179. Abs., Paper 66-4, p. 34.
- Logan, Alan  
1970: The new bivalve genus *Arctomyalina* from the Pennsylvanian of the Canadian Arctic Archipelago; *J. Paleontol.*, v. 44, p. 501-506.  
1970: A new species of *Cyrtorostra* (bivalvia) from the Permian of the Canadian Arctic; *J. Paleontol.* v. 44, p. 867-871.
- Løken, O.H. and Hodgson, D.A.  
1970: On the submarine geomorphology along the east coast of Baffin Island; *Can. J. Earth Sci.*, v. 8, p. 185-195. Abs., Paper 71-4, p. 17.
- Mackay, J.R.  
1972: Offshore permafrost and ground ice, southern Beaufort Sea, Canada; *Can. J. Earth Sci.*, v. 9, p. 1550-1561. Abs., Paper 73-4, p. 48.  
1974: Ice-wedge cracks, Garry Island, N.W.T.; *Can. J. Earth Sci.*, v. 11, p. 1366-1383. Abs., Paper 75-4, p. 16.  
1975: The closing of ice-wedge cracks in permafrost, Garry Island, N.W.T.; *Can. J. Earth Sci.*, v. 12, p. 1668-1674.
- Mackay, J.R. and MacKay, D.K.  
1974: Snow cover and ground temperatures, Garry Island, N.W.T.; *Arctic*, v. 27, p. 287-296. Abs., Paper 75-4, p. 15.
- Mackay, J.R., Rampton, V.N., and Fyles, J.G.  
1972: Relic Pleistocene permafrost, western Arctic, Canada; *Science*, v. 176, p. 1321-1323.
- MacLean, B., Jansa, L.F., Falconer, R.K.H. and Srivastava, S.P.  
(in press): Ordovician strata on the southeastern Baffin Island shelf as revealed by shallow drilling; *Can. J. Earth Sci.*
- Macurda, D.B.  
1967: A Permian blastoid from the Canadian Arctic; *J. Paleontol.* v. 41, p. 1282-1284.
- Manchester, K.S. and Clarke, D.G.  
1973: Geologic structure of Baffin Bay and Davis Strait as determined by geophysical techniques *in* *Arctic Geology*; *Am. Assoc. Petrol. Geologists, Mem.* 19, p. 536-541.
- McCrossan, R.G. and Porter, J.W.  
1973: The geology and petroleum potential of the Canadian sedimentary basins - a synthesis *in* *The Future Petroleum Provinces of Canada*; *Can. Soc. Petrol. Geologists, Mem.* 1, p. 589-720. Abs., Paper 74-1, p. 17.

## Other Scientific Journals (cont'd)

Author

- McCrossan, R.G. and Proctor, R.M.  
1971: Mineral potential of Arctic Canada; *UMR Journal*, no. 2, p. 31-37. Abs., Paper 72-4, p. 28.
- McGregor, D.C.  
1960: Devonian spores from Melville Island, Canadian Arctic Archipelago; *Paleontol.*, v. 3, pt. 1, p. 26-44.
- McGregor, D.C.  
1967: Composition and range of some Devonian spore assemblages of Canada; *Rev. Palaeobotany Palynology*, v. 1, p. 173-183. Abs., Paper 68-4, p. 46.  
1974: Early Devonian spores from central Ellesmere Island, Canadian Arctic; *Can. J. Earth Sci.*, v. 11, p. 70-78. Abs., Paper 74-4, p. 18.
- McLaren, D.J.  
1960: The role of fossils in defining rock units with examples from the Devonian of Western and Arctic Canada; *Am. J. Sci.*, v. 257, p. 734-751.  
1971: Energy versus environment - the Arctic dilemma; *Can. Mining. Met. Bull.*, v. 64, p. 68-73. Abs., Paper 72-4, p. 30.
- Miall, A.D.  
1970: Continental-marine transition in the Devonian of Prince of Wales Island, N.W.T.; *Can. J. Earth Sci.*, v. 7, p. 125-144.  
1970: Devonian alluvial fans, Prince of Wales Island, Arctic Canada; *J. Sediment. Petrol.*, v. 40, p. 556-571.  
1970: A new Lower Devonian rock unit in the Canadian Arctic Islands: discussion; *Can. J. Earth Sci.*, v. 7, p. 1027-1029.  
1974: Manganese spherulites at an intra-Cretaceous disconformity, Banks Island, Northwest Territories; *Can. J. Earth Sci.*, v. 11, p. 1704-1716. Abs., Paper 75-4, p. 18.  
1974: Paleocurrent analysis of alluvial sediments: a discussion of directional variance and vector magnitude; *J. Sediment. Petrol.*, v. 44, p. 1174-1185 (Data from Banks I). Abs., Paper 75-4, p. 18.  
1975: Post-Paleozoic geology of Banks, Prince Patrick, and Eglinton Islands, Arctic Canada *in* *Canada's Continental Margins*; *Can. Soc. Petrol. Geologists, Mem.* 4, p. 557-587.  
(in press): Sedimentary structures and paleocurrents in a Tertiary deltaic succession, northern Banks Basin, Arctic Canada; *Can. J. Earth Sci.*

## Other Scientific Journals (cont'd)

Author

- Miall, A.D.  
(in press): The Devonian geology of Banks Island Arctic Canada, and its bearing on the tectonic development of the circum-Arctic region; Geol. Soc. Am., Bull.
- (in press): Paleocurrent and paleohydrologic analysis of some vertical profiles through a Cretaceous braided stream deposit, Banks Island, Arctic Canada; Sedimentology.
- Morrow, D.W.  
1973: Stratigraphy and sedimentology of lower Paleozoic formations near and on Grinnell Peninsula, Devon Island, N.W.T. (Abs.); Diss. Abstr. Int. v. 34, no. 5, p. 2098B.
- Nassichuk, W.W.  
1967: A morphologic character new to ammonoids portrayed by *Clistoceras* gen. nov. from the Pennsylvanian of Arctic Canada; J. Paleontol., v. 41, p. 237-242. Abs., Paper 67-4, p. 43.
- 1970: Permian ammonoids from Devon and Melville Islands, Canadian Arctic Archipelago; J. Paleontol., v. 44, p. 77-97.
- 1972†: Sverdrup Basin in The Canadian Arctic Islands and the Mackenzie region; XXIV Intern. Geol. Cong., Montreal, Canada; Guidebook, Excursion A-66, p. 109-131.
- Nassichuk, W.W. and Furnish, W.M.  
1965: *Christioceras*, a new Pennsylvanian ammonoid from the Canadian Arctic; J. Paleontol., v. 39, p. 724-728. Abs., Paper 66-4, p. 41.
- 1970: *Christioceras*, an Arctic Pennsylvanian ammonoid, discovered in West Texas; J. Paleontol., v. 44, p. 399-401.
- Nassichuk, W.W. and Spinosa, Claude  
1970: *Helicoprion* sp., a Permian elasmobranch from Ellesmere Island, Canadian Arctic; J. Paleontol., v. 44, p. 1130-1132. Abs., Paper 71-4, p. 33.
- 1972: Early Permian (Asselian) ammonoids from the Hare Fiord Formation, northern Ellesmere Island; J. Paleontol., v. 46, p. 536-544. Abs., Paper 73-4, p. 58.
- Nassichuk, W.W., Thorsteinsson, R., and Tozer, E.T.  
1972: Permian-Triassic boundary in the Canadian Arctic Archipelago; Bull. Can. Petrol. Geol., v. 20, p. 651-658; also in Can. Soc. Petrol. Geologists, Mem. 2, 1973, p. 286-293. Abs., Paper 73-4, p. 58.
- Overton, A.  
1970: Seismic refraction surveys, western Queen Elizabeth Islands and Polar Continental Margin; Can. J. Earth Sci., v. 7, p. 345-365. Abs., Paper 71-4, p. 34.

## Other Scientific Journals (cont'd)

Author

- Peake, E., Strosher, M., Baker, B.L., Gossen, R., McCrossan, R.G., Yorath, C.J., and Hodgson, G.W.  
1972: The potential of Arctic sediments; hydrocarbons and possible precursors in Beaufort Sea sediments; 24th Intern. Geol. Congr., Sec. 5, p. 28-37. Abs., Paper 73-4, p. 55.
- Pelletier, B.R.  
1966: Development of submarine physiography in the Canadian Arctic and its relation to crustal movement in Continental Drift, Garland, G.D., ed.; Roy. Soc. Can., Spec. Publ. no. 9, Univ. of Toronto Press, p. 77-101.
- 1966: Canadian Arctic Archipelago: Bathymetry and Geology in Fairbridge, R.W., ed.; Encyclopedia of Oceanography, Reinhold, New York, p. 160-168.
- 1975: Sediment dispersal in the southern Beaufort Sea; Canada, Environment, Marine Sciences Branch, Beaufort Sea Project, Tech. Rept. 25a.
- Pelletier, B.R. and Shearer, J.M.  
1972: Sea bottom scouring in the Beaufort Sea of the Arctic Ocean; 24th Intern. Geol. Congr., Sec. 8, p. 251-261. Abs., Paper 73-4, p. 60.
- Pissart, A. and French, H.M.  
1976: Pingo investigations, north-central Banks Island, Canadian Arctic; Can. J. Earth Sci., v. 13, p. 937-946.
- Rigby, J.K.  
1970: *Ellesmerespongia feildeni*, a new Permian sponge from the Canadian Arctic; J. Paleontol., v. 44, p. 1143-1145.
- Rigby, J.K. and Terrell, F.M.  
1973: Permian sponges from western Ellesmere Island, Arctic Canada; Can. J. Earth Sci., v. 10, p. 1431-1443.
- Roy, S.K. and Hills, L.V.  
1972: Fossil woods from the Beaufort Formation (Tertiary), northwestern Banks Island, Canada; Can. J. Botany, v. 50, p. 2637-2648.
- Sander, G.W. and Overton, A.  
1965: Deep seismic refraction investigation in the Canadian Arctic Archipelago; Geophysics, v. 30, p. 87-96. Abs., Paper 66-4, p. 45.
- Sinha, A.K. and Frisch, T.  
1975: Whole-rock Rb/Sr ages of metamorphic rocks from northern Ellesmere Island, Canadian Arctic Archipelago. I. The gneiss terrain between Ayles Fiord and Yelverton Inlet; Can. J. Earth Sci., v. 12, p. 90-94. Abs., Paper 75-4, p. 10.

† Guidebook available at GSC publication office.

## Other Scientific Journals (cont'd)

Author

- Sinha, A.K. and Frisch, T.  
1976: Whole-rock Rb/Sr and zircon U/Pb ages of metamorphic rocks from northern Ellesmere Island, Canadian Arctic Archipelago. II. The Cape Columbia Complex; Can. J. Earth Sci., v. 13, p. 774-780.
- Snowdon, L.R. and Roy, K.J.  
1975: Regional organic metamorphism in the Mesozoic strata of the Sverdrup Basin; Bull. Can. Petrol. Geol., v. 23, p. 131-148.
- Souchez, R.  
1971: Ice-cored moraines in southwestern Ellesmere Island, N.W.T., Canada; J. Glaciol., v. 10, p. 245-254.
- St.-Onge, Denis  
1961: Glaciation au Pleistocene sur l'île Ellef Ringnes, (Abs.); Assoc. Canadienne-Française Av. Sc. Annales, v. 27, p. 78.  
1964: Les formes de nivation de l'île Ellef Ringnes, T.N.-O.; Acta Géographica Lovaniensia, v. 3, p. 287-304.  
1965: La géomorphologie de l'île Ellef Ringnes, T.N.-O.; Étude Géographique no. 38, Impr. de la Reine.
- Strimple, H.L. and Nassichuk, W.W.  
1974: Pennsylvanian crinoids from Ellesmere Island, Arctic Canada; J. Paleontol., v. 48, p. 1149-1155. Abs., Paper 75-4, p. 19.
- Terasmae, J.  
1965: Problems of Quaternary palynology in the Canadian Arctic; Intern. Assoc. Quat. Res. (INQUA), VII Intern. Congr., General Sessions, Abs., p. 464. Abs., Paper 66-4, p. 50.
- Terasmae, J., Webber, P.J., and Andrews, J.T.  
1966: A study of late-Quaternary plant-bearing beds in north-central Baffin Island, Canada; Arctic, v. 19, p. 296-318. Abs., Paper 67-4, p. 57.
- Thorsteinsson, R.  
1955: The mode of cladal generation in *Cyrtograptus*; Geol. Mag., v. XCII, no. 1, p. 37-49.  
1966: Preliminary note on Silurian and Devonian ostracoderms from Cornwallis and Somerset Islands, Canadian Arctic Archipelago in Centre National de la Recherche Scientifique. Colloques Internationaux no. 163; Problèmes actuels de paléontologie (évolution des vertébrés, p. 45-47).  
1969: Arctic Islands, Canada, in Siluro-Devonian boundary in North America; Bull., Geol. Soc. Am., v. 80, p. 2165-2174.

## Other Scientific Journals (cont'd)

Author

- Thorsteinsson, R.  
1973: Dermal elements of a new lower vertebrate from Middle Silurian (Upper Wenlockian) rocks of the Canadian Arctic Archipelago; Palaeontographica, Abt. A, bd. 143, p. 51-57.
- Thorsteinsson, R., and Tozer, E.T.  
1957: Geological investigations in Ellesmere and Axel Heiberg Islands, 1956; Arctic, v. 10, p. 2-31.
- Tozer, E.T.  
1972: Observations on the shell structure of Traissic ammonoids; Paleontology, v. 15, Pt. 4, p. 637-654.
- Trettin, H.P.  
1963: Caledonian movements in the Canadian Arctic Archipelago; Bull. Can. Petrol. Geol., v. 11, p. 107-115.  
1965: Middle Ordovician to Middle Silurian carbonate cycle, Brodeur Peninsula, north-western Baffin Island; Bull. Can. Petrol. Geol., v. 13, p. 155-180. Abs., Paper 66-4, p. 52.  
1967: Devonian of the Franklinian eugeosyncline in Intern. Symp. on the Devonian System, D.H. Oswald, ed.; Alberta Soc. Petrol. Geologists, Calgary, Alberta, v. 1, p. 693-701. Abs. Paper 68-4, p. 63.  
1969: A Paleozoic-Tertiary fold belt in northernmost Ellesmere Island aligned with the Lomonosov Ridge; Geol. Soc. Am. Bull., v. 80, p. 143-148. Abs., Paper 69-4, p. 47.
- Trettin, H.P.  
1970: Ordovician-Silurian flysch sedimentation in the axial trough of the Franklinian Geosyncline, northeastern Ellesmere Island, Arctic Canada in Flysch sedimentology in North America; Geol., Assoc. Can., Spec. Paper no. 7, J. Lajoie, ed., p. 13-35. Abs., Paper 71-4, p. 50.  
1972+: Franklinian Geosyncline, in The Canadian Arctic Islands and the Mackenzie region; XXIV Intern. Geol. Congr., Montreal, Canada, Guidebook, Excursion A-66, p. 87-109.  
1973: Early Paleozoic evolution of northern parts of Canadian Arctic Archipelago in Arctic Geology; Am. Assoc. Petrol. Geologists, Mem. 19, p. 57-75. Abs., Paper 74-4, p. 29.
- Trettin, H.P., Frisch, T.O., Sobczak, L.W., Weber, J.R., Niblet, E.R., Law, L.K., DeLaurier, J.M., and Whitham, K.  
1972: The Innuitian Province, in Variations in Tectonic Styles in Canada, R.A. Price and R.J.W. Douglas, eds.; Geol. Assoc. Can., Spec. Paper 11, p. 83-179. Abs., Paper 73-4, p. 78.

† Guidebook available at GSC publication offices.

Other Scientific Journals (cont'd)

Author

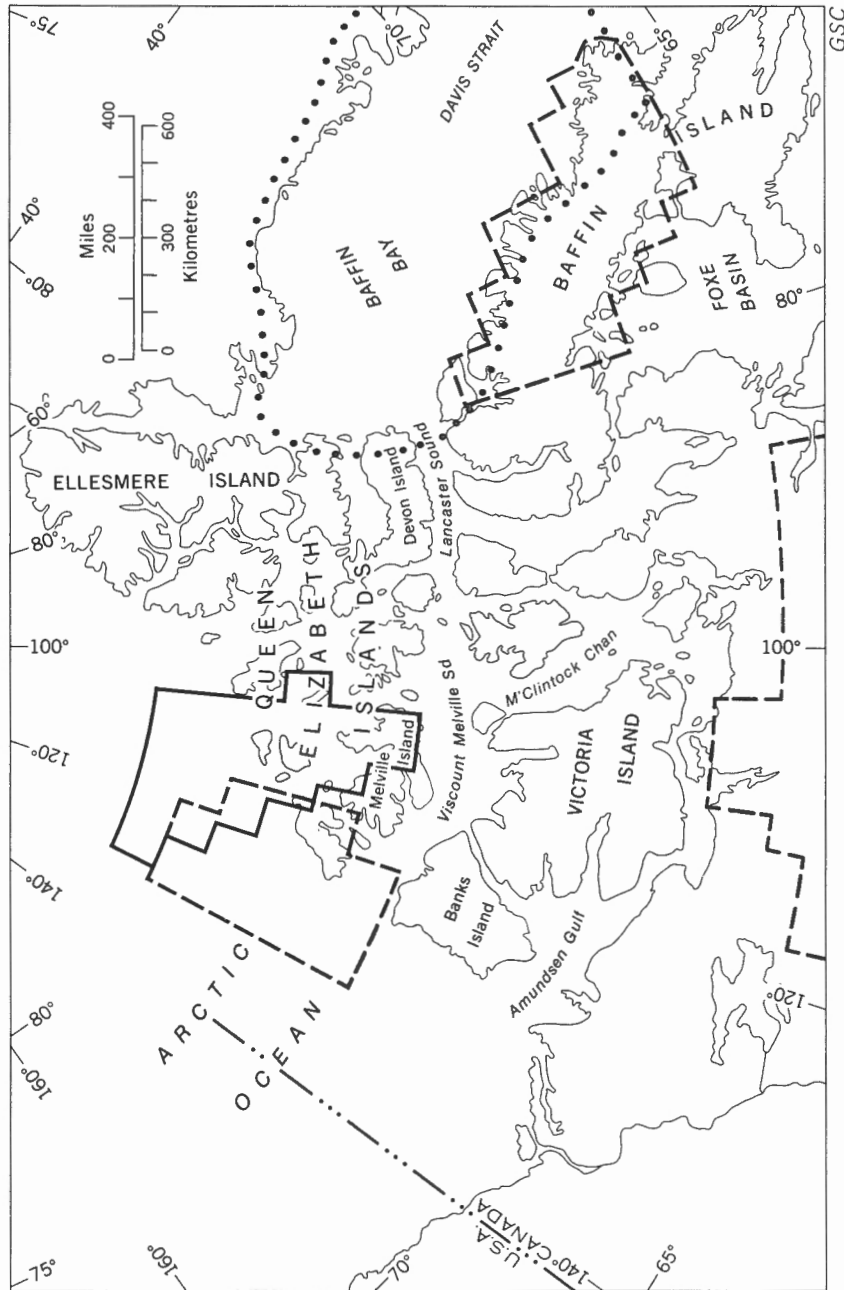
- Trettin, H.P. and Hills, L.V.  
1967: Triassic "tar sands" of Melville Island, Canadian Arctic Archipelago; Proc. 7th World Petrol. Congr., Mexico City, v. 3, p. 773-787. Abs., Paper 68-4, p. 64.
- Uyeno, T.T. and Mason, D.  
1975: New lower and middle Devonian conodonts from northern Canada; J. Paleontol., v. 49, p. 710-723.
- Vilks, G.  
1972: Planktonic foraminifera in the water and sediments of Beaufort Sea, Canadian Arctic; 24th Intern. Geol. Congr., Montreal, Canada, Sec. 8, p. 135. Abs., Paper 73-4, p. 78.
- 1976: Foraminifera of an ice-scoured nearshore zone in the Canadian Arctic *in* First Int. Symp. on Benthonic Foraminifera of Continental Margin, Part A., Ecology and Biology, C.T. Schafer and B.R. Pelletier, eds.; Maritime Sediments, Spec. Publ. no. 1 (A), p. 267-277.

Other Scientific Journals (cont'd)

Author

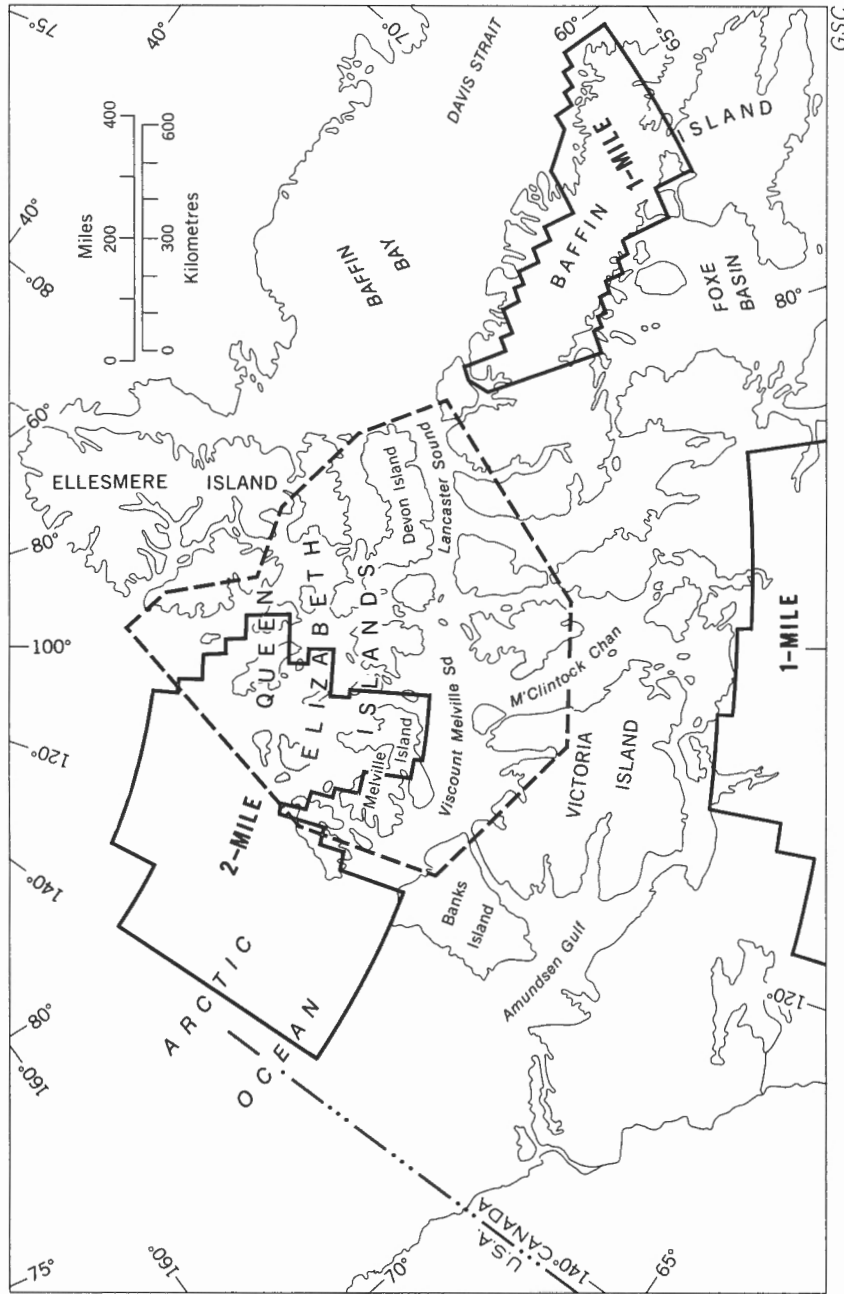
- Wagner, F.J.E.  
1972: Molluscan fauna as indicators of late Pleistocene history, southeastern Beaufort Sea; 24th Intern. Geol. Congr., Montreal, Canada, Sec. 8, p. 142. Abs., Paper 73-4, p. 78.
- Workum, R.H., Bolton, T.E., and Barnes, C.R.  
1976: Ordovician geology of Akpatok Island, Ungava Bay, District of Franklin; Can. J. Earth Sci., v. 13, p. 157-178.
- Yorath, C.J.  
1973: Geology of Beaufort-Mackenzie Basin and eastern part of northern Interior Plains *in* Arctic Geology; Am. Assoc. Petrol. Geologists, Mem. 19, p. 41-47.
- Yorath, C.J. and Norris, D.K.  
1975: The tectonic development of the southern Beaufort Sea and its relationship to the origin of the Arctic Ocean basin *in* Canada's Continental Margins and Offshore Petroleum Exploration; Can. Soc. Petrol. Geologists, Mem. 4, p. 589-612.





Aeromagnetic residual anomaly and downward continuation maps (relating to Paper 68-44, G.S.C.) ..... GSC  
 Aeromagnetic 4-mile series (see "Arctic Islands"; "Western Canada" and "Eastern Canada" indexes, G.S.C.) .....  
 Marine surveys; simple Bouguer and free air gravity anomaly maps; Plates 1 and 2 of  
 Marine Sciences Paper 12 (G.S.C. Paper 73-37) .....

FIGURE 1. Geophysical profiles and map series, Arctic Islands, by the Geological Survey of Canada (information to July, 1976)



Airborne geophysical reconnaissance, 1955 (Aeromagnetic, radiometric profiles; see G.S.C. Bulletin 73) ..... Aeromagnetic 1-mile and 2-mile series (see indexes 12, 14, 16, 17; G.S.C.) ...

FIGURE 2. Geophysical profiles and map series, Arctic Islands, by the Geological Survey of Canada (information to July, 1976)

