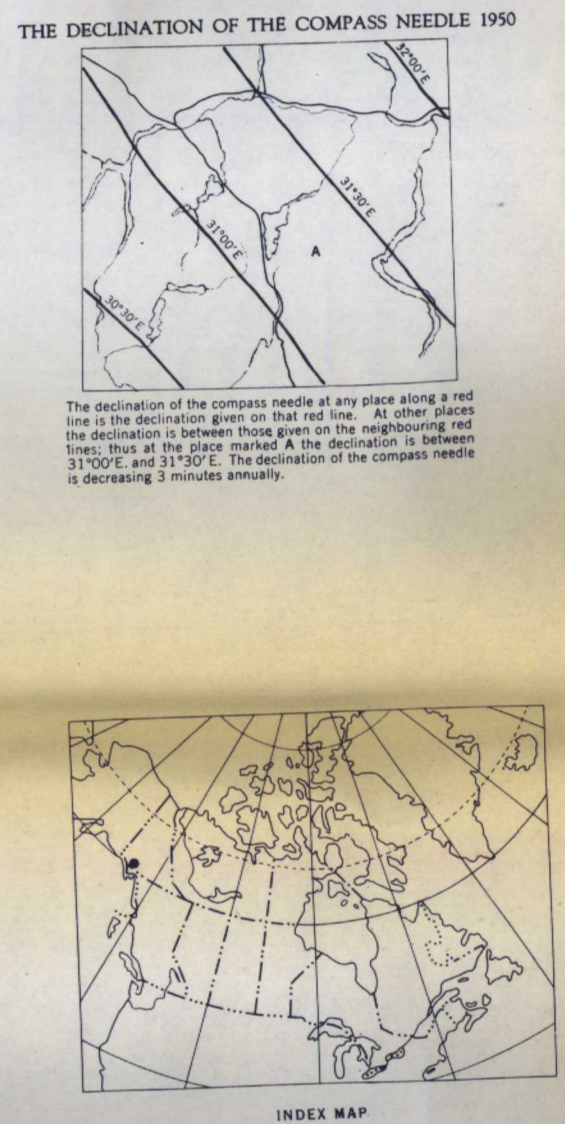
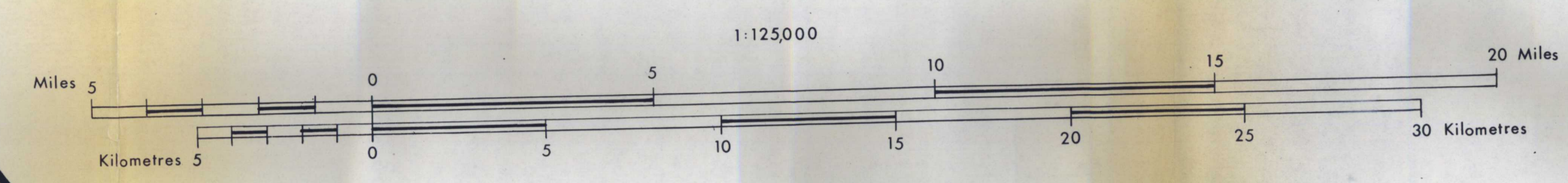
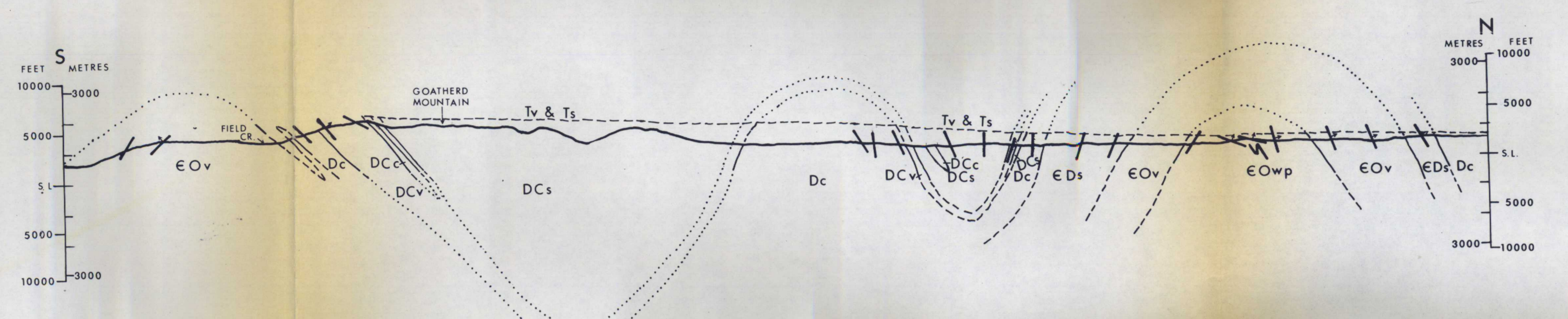


GEOLOGY OF PARTS OF MOUNT ST. ELIAS (115B) AND DEZADEASH (115A) MAP - AREAS, YUKON TERRITORY

MAP 3A



ALEXANDER TERRANE		TAKU-SKOLAI TERRANE		GRAVINA-NUTZOTIN BELT	
QUATERNARY					
GLACIOPROCK AND BENEATH					
Q ₁	Clacial deposits; recent alluvium and colluvium fine if any coarse	Q ₂	Clacial deposits; recent alluvium and colluvium fine if any coarse	Q ₃	Clacial deposits; recent alluvium and colluvium fine if any coarse
Q ₄	Landslide and rockslide debris	Q ₅	Landslide and rockslide debris	Q ₆	Landslide and rockslide debris
TERTIARY					
MIDDLE MIocene AND RECENT					
M ₁	Middle Miocene; basalt, tuff, minor igneous	M ₂	Middle Miocene; basalt, tuff, minor igneous	M ₃	Middle Miocene; basalt, tuff, minor igneous
CRETACEOUS					
UPPER CRETACEOUS					
U ₁	Upper Cretaceous; sandstone, siltstone, shale, minor carbonaceous shale, lignite	U ₂	Upper Cretaceous; sandstone, siltstone, shale, minor carbonaceous shale, lignite	U ₃	Upper Cretaceous; sandstone, siltstone, shale, minor carbonaceous shale, lignite
MIDDLE CRETACEOUS					
M ₄	Middle Cretaceous; sandstone, siltstone, shale, minor carbonaceous shale, lignite	M ₅	Middle Cretaceous; sandstone, siltstone, shale, minor carbonaceous shale, lignite	M ₆	Middle Cretaceous; sandstone, siltstone, shale, minor carbonaceous shale, lignite
LOWER CRETACEOUS					
L ₁	Lower Cretaceous; sandstone, siltstone, shale, minor carbonaceous shale, lignite	L ₂	Lower Cretaceous; sandstone, siltstone, shale, minor carbonaceous shale, lignite	L ₃	Lower Cretaceous; sandstone, siltstone, shale, minor carbonaceous shale, lignite
TRIASSIC					
T ₁	Triassic; sandstone, siltstone, shale, minor carbonaceous shale, lignite	T ₂	Triassic; sandstone, siltstone, shale, minor carbonaceous shale, lignite	T ₃	Triassic; sandstone, siltstone, shale, minor carbonaceous shale, lignite
PERMIAN					
P ₁	Permian; sandstone, siltstone, shale, minor carbonaceous shale, lignite	P ₂	Permian; sandstone, siltstone, shale, minor carbonaceous shale, lignite	P ₃	Permian; sandstone, siltstone, shale, minor carbonaceous shale, lignite
DEVONIAN					
D ₁	Devonian; sandstone, siltstone, shale, minor carbonaceous shale, lignite	D ₂	Devonian; sandstone, siltstone, shale, minor carbonaceous shale, lignite	D ₃	Devonian; sandstone, siltstone, shale, minor carbonaceous shale, lignite
SYMBIOTIC AND (?) SYMBIOTIC					
S ₁	Symbiotic and (?) symbiotic; sandstone, siltstone, shale, minor carbonaceous shale, lignite	S ₂	Symbiotic and (?) symbiotic; sandstone, siltstone, shale, minor carbonaceous shale, lignite	S ₃	Symbiotic and (?) symbiotic; sandstone, siltstone, shale, minor carbonaceous shale, lignite
PALEOZOIC (UNDIFFERENTIATED)					
P _u	Paleozoic (undifferentiated); sandstone, siltstone, shale, minor carbonaceous shale, lignite	P _v	Paleozoic (undifferentiated); sandstone, siltstone, shale, minor carbonaceous shale, lignite	P _w	Paleozoic (undifferentiated); sandstone, siltstone, shale, minor carbonaceous shale, lignite



OPEN FILE
DOSSIER PUBLIC
OCT 1976
381
GEOLOGICAL SURVEY
COMMISSION GEOLOGIQUE
OTTAWA