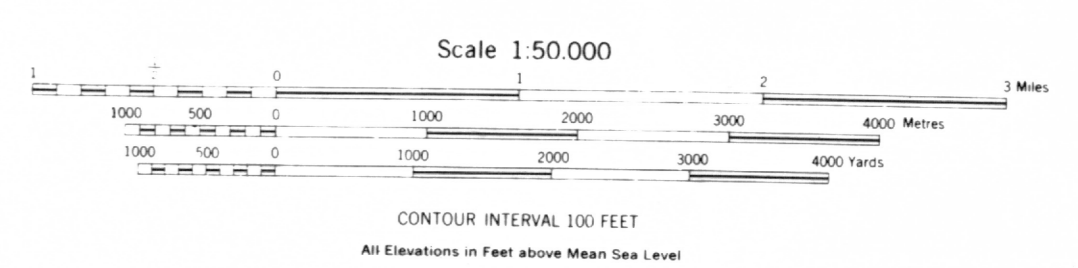
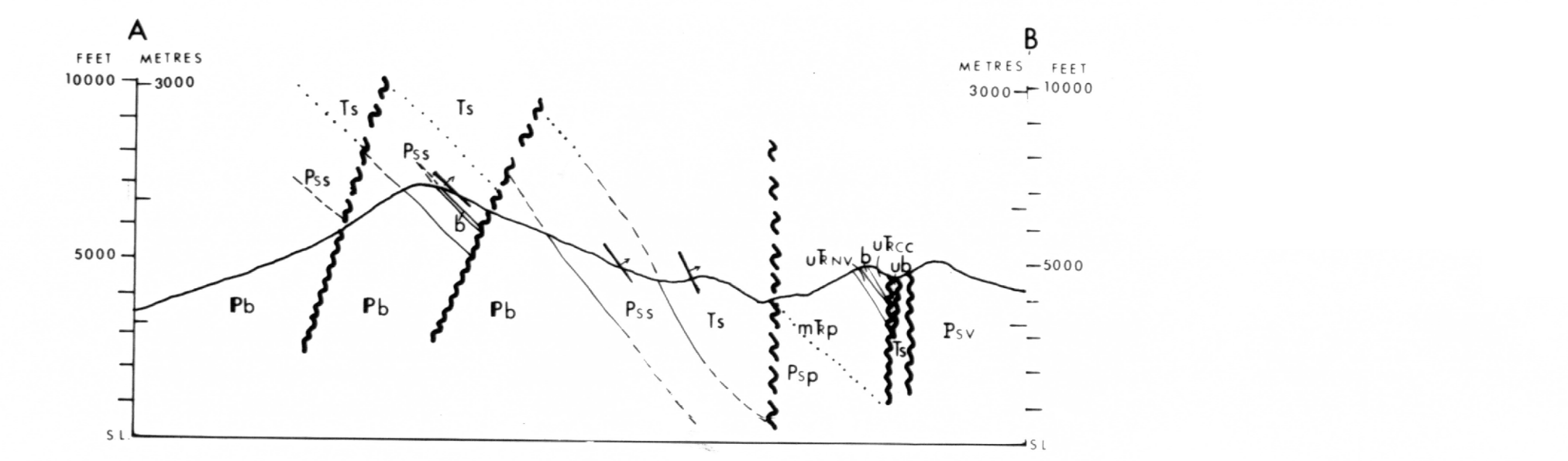
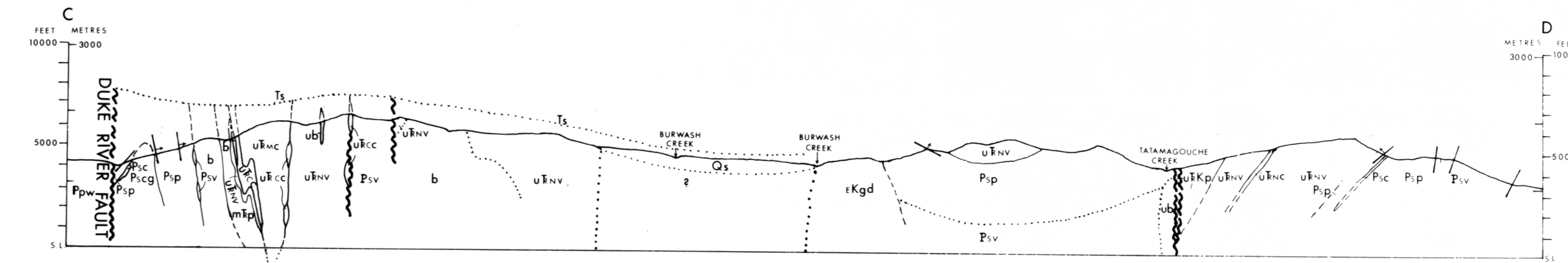
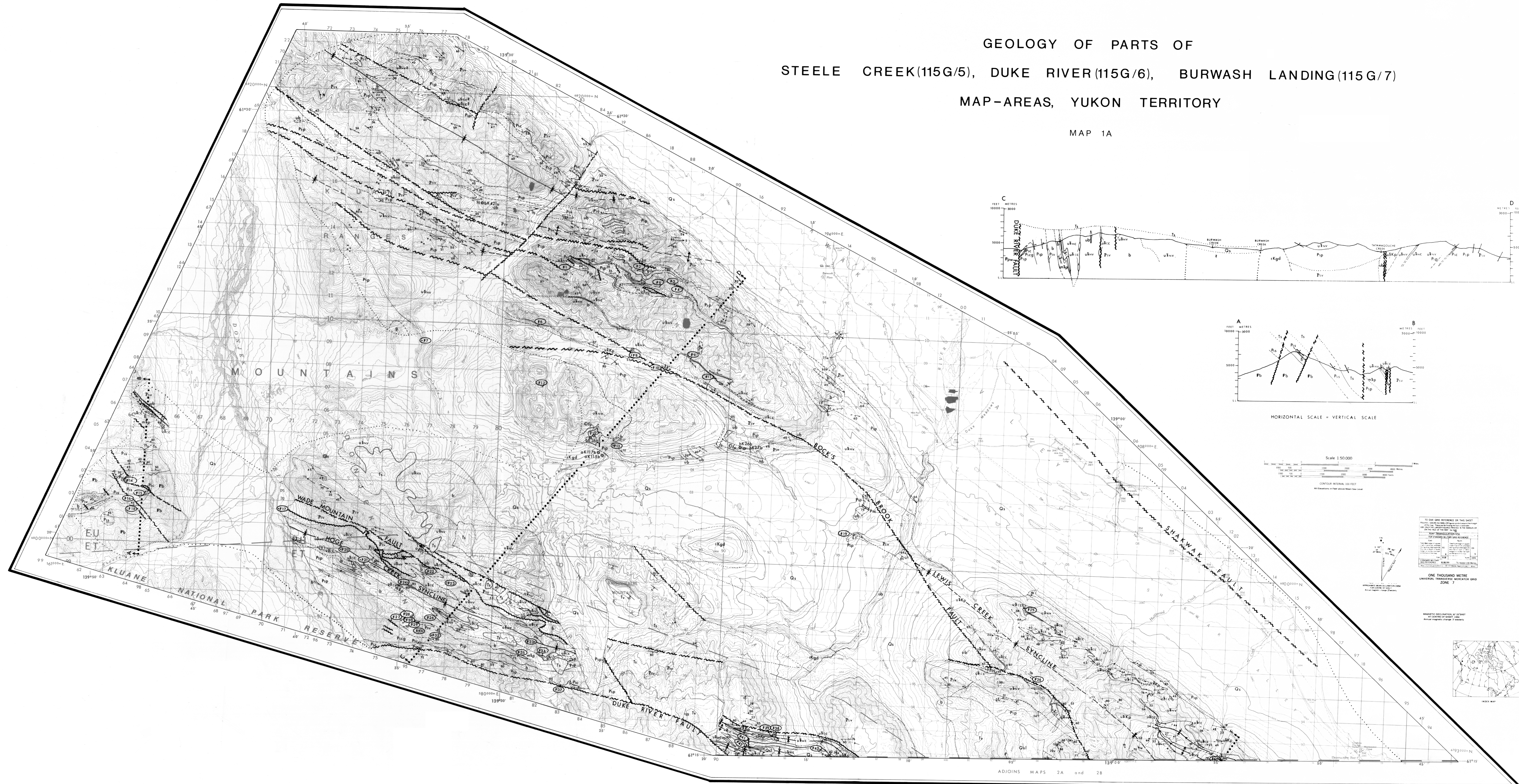


GEOLOGY OF PARTS OF STEELE CREEK (115G/5), DUKE RIVER (115G/6), BURWASH LANDING (115G/7) MAP-AREAS, YUKON TERRITORY

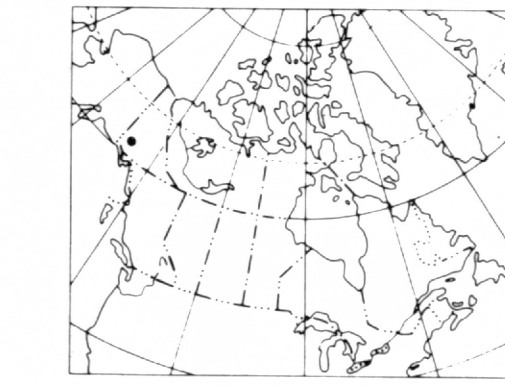
MAP 1A



Scale 1:50,000

HORIZONTAL SCALE = VERTICAL SCALE

ONE THOUSAND METRE
UNIVERSAL TRANSVERSE MERCATOR GRID
ZONE 7



| ALEXANDER TERRANE | | TAKU-SKOAI TERRANE | | GRAVINA-NUTZOTIN BELT | |
|--------------------------------|--|--------------------------------|--|--------------------------------|--|
| CONTINENTAL | PALEOZOIC AND MIOCENE | CONTINENTAL | PALEOZOIC AND MIOCENE | CONTINENTAL | PALEOZOIC AND MIOCENE |
| Q1 | Quaternary deposits, recent alluvium and colluvium, top of any terrace | Q1 | Quaternary deposits, recent alluvium and colluvium, top of any terrace | Q1 | Quaternary deposits, recent alluvium and colluvium, top of any terrace |
| Q2 | Quaternary deposits, recent alluvium and colluvium, top of any terrace | Q2 | Quaternary deposits, recent alluvium and colluvium, top of any terrace | Q2 | Quaternary deposits, recent alluvium and colluvium, top of any terrace |
| NEOTENE | NEOTENE AND MIOCENE | NEOTENE | NEOTENE AND MIOCENE | NEOTENE | NEOTENE AND MIOCENE |
| T1 | Tertiary, latest period | T1 | Tertiary, latest period | T1 | Tertiary, latest period |
| T2 | Tertiary, middle period | T2 | Tertiary, middle period | T2 | Tertiary, middle period |
| T3 | Tertiary, early period | T3 | Tertiary, early period | T3 | Tertiary, early period |
| CRETACEOUS AND JURASSIC | CRETACEOUS AND JURASSIC | CRETACEOUS AND JURASSIC | CRETACEOUS AND JURASSIC | CRETACEOUS AND JURASSIC | CRETACEOUS AND JURASSIC |
| C1 | Cretaceous, upper part | C1 | Cretaceous, upper part | C1 | Cretaceous, upper part |
| C2 | Cretaceous, middle part | C2 | Cretaceous, middle part | C2 | Cretaceous, middle part |
| C3 | Cretaceous, lower part | C3 | Cretaceous, lower part | C3 | Cretaceous, lower part |
| J1 | Jurassic, upper part | J1 | Jurassic, upper part | J1 | Jurassic, upper part |
| J2 | Jurassic, lower part | J2 | Jurassic, lower part | J2 | Jurassic, lower part |
| TRIASSIC AND PERMIAN | TRIASSIC AND PERMIAN | TRIASSIC AND PERMIAN | TRIASSIC AND PERMIAN | TRIASSIC AND PERMIAN | TRIASSIC AND PERMIAN |
| T1 | Triassic, upper part | T1 | Triassic, upper part | T1 | Triassic, upper part |
| T2 | Triassic, lower part | T2 | Triassic, lower part | T2 | Triassic, lower part |
| P1 | Permian, upper part | P1 | Permian, upper part | P1 | Permian, upper part |
| P2 | Permian, lower part | P2 | Permian, lower part | P2 | Permian, lower part |
| DEVONIAN AND SILURIAN | DEVONIAN AND SILURIAN | DEVONIAN AND SILURIAN | DEVONIAN AND SILURIAN | DEVONIAN AND SILURIAN | DEVONIAN AND SILURIAN |
| D1 | Devonian, upper part | D1 | Devonian, upper part | D1 | Devonian, upper part |
| D2 | Devonian, lower part | D2 | Devonian, lower part | D2 | Devonian, lower part |
| S1 | Silurian, upper part | S1 | Silurian, upper part | S1 | Silurian, upper part |
| S2 | Silurian, lower part | S2 | Silurian, lower part | S2 | Silurian, lower part |
| PRECAMBRIAN | PRECAMBRIAN | PRECAMBRIAN | PRECAMBRIAN | PRECAMBRIAN | PRECAMBRIAN |
| P1 | Proterozoic, upper part | P1 | Proterozoic, upper part | P1 | Proterozoic, upper part |
| P2 | Proterozoic, lower part | P2 | Proterozoic, lower part | P2 | Proterozoic, lower part |