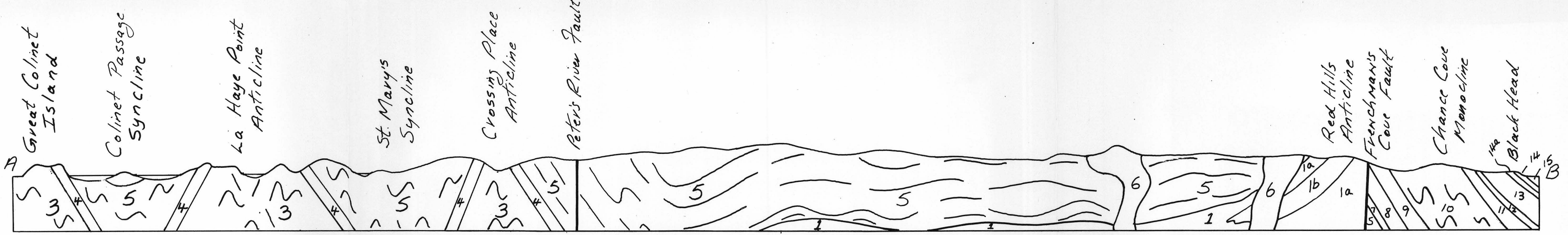
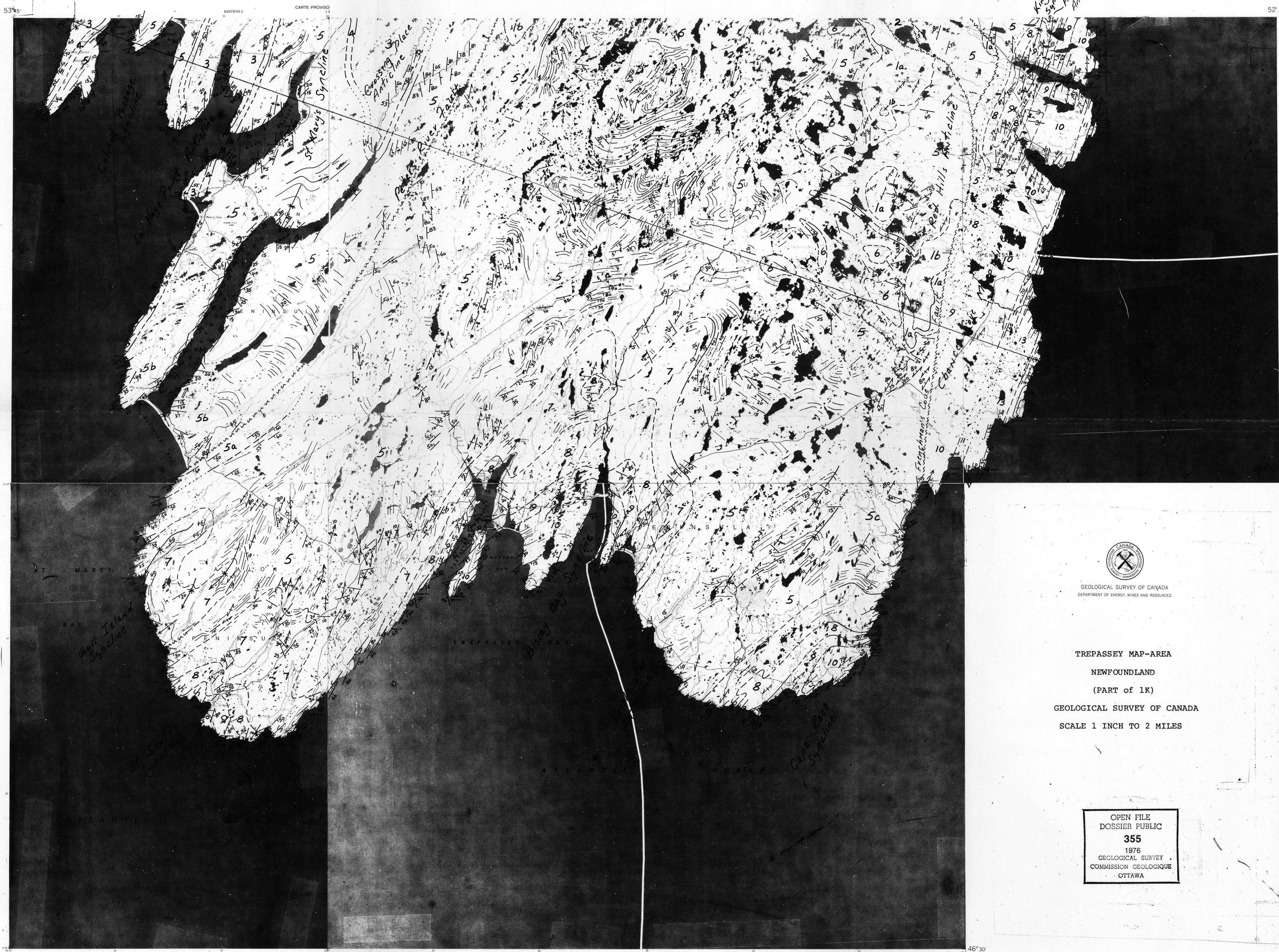


076 281
078 27

1000 ft
Sea level



- PRECAMBRIAN (HADRYNIAN)
- SIGNAL HILL GROUP (12-15)
- Cape Ballard Formation
- 15a, grey shale and siltstone with minor purple shale; 15b, thick-bedded grey sandstone and quartz granule conglomerate
- Perryland Head Formation
- 14 Thin- to medium-bedded grey sandstone; 14a, High Rocks Member, red wavy-bedded sandstone and shale
- Tibbett Hill Formation
- 13 Thick-bedded light grey sandstone with alternating units of thin-bedded dark grey sandstone and siltstone
- Cappahayden Formation
- 12 Fissile parallel-laminated light grey siltstone
- ST. JOHN'S GROUP (9-11)
- Renews Head Formation
- 11 Irregular thin-bedded dark grey sandstone with minor shale
- Permeuse Formation
- 10 Grey to dark grey and black shale with thin lenses of buff-weathering sandstone and siltstone. Mainly light grey thin-bedded shale and sandstone toward base.
- Trepassey Formation
- 9 Medium- to thin-bedded grey sandstone and shale, graded sandstone beds with shale tops
- CONCEPTION GROUP (3-8)
- Mistaken Point Formation
- 8 Medium-bedded grey to pink sandstone and green to purple and red shale, minor thin tuff horizons. Contains Precambrian fossils toward its top
- Briscol Formation
- 7 Thick-bedded coarse grey sandstone, thick-bedded olive to grey argillite, coarse pale red sandstone and arkose, local units of thin-bedded grey siltstone and shale
- INTRUSIVE ROCKS
- Whaleback Gabbro
- 6 Fine- to medium- and coarse-grained massive gabbro
- Drook Formation
- 5 Parallel-bedded olive green to grey and buff argillaceous chert, siliceous siltstone and sandstone, silicified tuff, locally includes thick sandstone beds alternating with shale and siltstone, minor purple argillite; 5a, Peter's River Member, grey thick-bedded coarse sandstone with thin-bedded siltstone and shale units; 5b, Cape English Member, thick-bedded grey to pale red sandstone with thin-bedded siltstone and shale units; 5c, Falcian Cove Member, grey pebbly siltstone and shale with lozenge-shaped transposed beds; 5d, Biscay Member, mafic pillow lava
- Caskiers Formation
- 4 Grey mixtite with thin alternating units of graded rhythmites that contain dropstones. Red mixtite overlain by red mudstone at top. 4a, South Point Member, red agglomerate
- Wall Bay Formation
- 3 Green siliceous siltstone and argillite, grey sandstone, chert, thick-bedded tuffaceous sandstone and green siliceous tuff and agglomerate, white quartzose sandstone and minor limestone
- Holyrood Granite
- 2 Medium-grained massive pink granite
- HARBOUR MAIN GROUP (1)
- 1 Poorly bedded, bimodal volcanic rocks; 1a, pink to grey silicic tuff and agglomerate, pink to red rhyolite and welded tuff; 1b, altered green to purplish massive basalt



- Geological boundary, defined, approx., assumed
- Fault, inferred
- Trend of rock tides and bedrock controlled topography with dip
- Bedding (tops known) inclined
- Bedding (tops unknown) inclined, vertical
- Cleavage, inclined, vertical, dip unknown
- Axis of minor fold, horizontal, plunging
- Synclinal axis with direction of plunge
- Anticlinal axis with direction of plunge
- Direction of ice movement (striae and grooves)
- Direction of sedimentary transport
- Precambrian fossil locality

Geology by Harold Williams and Arthur F. King, Memorial University of Newfoundland, 1974 and 1975.

Geological Survey of Canada
Department of Energy, Mines and Resources

TREPASSEY MAP-AREA
NEWFOUNDLAND
(PART OF 1K)
Geological Survey of Canada
SCALE 1 INCH TO 2 MILES

OPEN FILE
DOSSIER PUBLIC
355
1976
GEOLOGICAL SURVEY
COMMISSION GEOLOGIQUE
OTTAWA

This document was produced by scanning the original publication. Ce document est le produit d'une numérisation par balayage de la publication originale.

46° 30'
53°