

Mines & Mineral Occurrences of Alert Bay-Cape Scott Area
 (Data from B.C. Department of Mines and Petroleum Resources Mineral Inventory Maps and Cards; by E.V. Jackson & G.E.P. Eastwood)

LEGEND

- ⊙ M Bog Iron
- ⊙ K Potassium-Alumina
- ⊙ H-1 Porphyry Copper
- ⊙ G-8 Gold Quartz Veins
- ⊙ G-2 Copper-Bearing Veins
- ⊙ F-4 Lead-Zinc Skarn or replacement in Limestone
- ⊙ F-2 Copper Skarn
- ⊙ F-1 Iron Skarn
- ⊙ C Copper in Volcanics
- ⊙ Mineral occurrence
- Present or former producing mines

ALERT BAY BRITISH COLUMBIA
 Scale 1:250,000 or approximately 1 inch to 4 Miles
 Scale of Kilometers

RELIABILITY

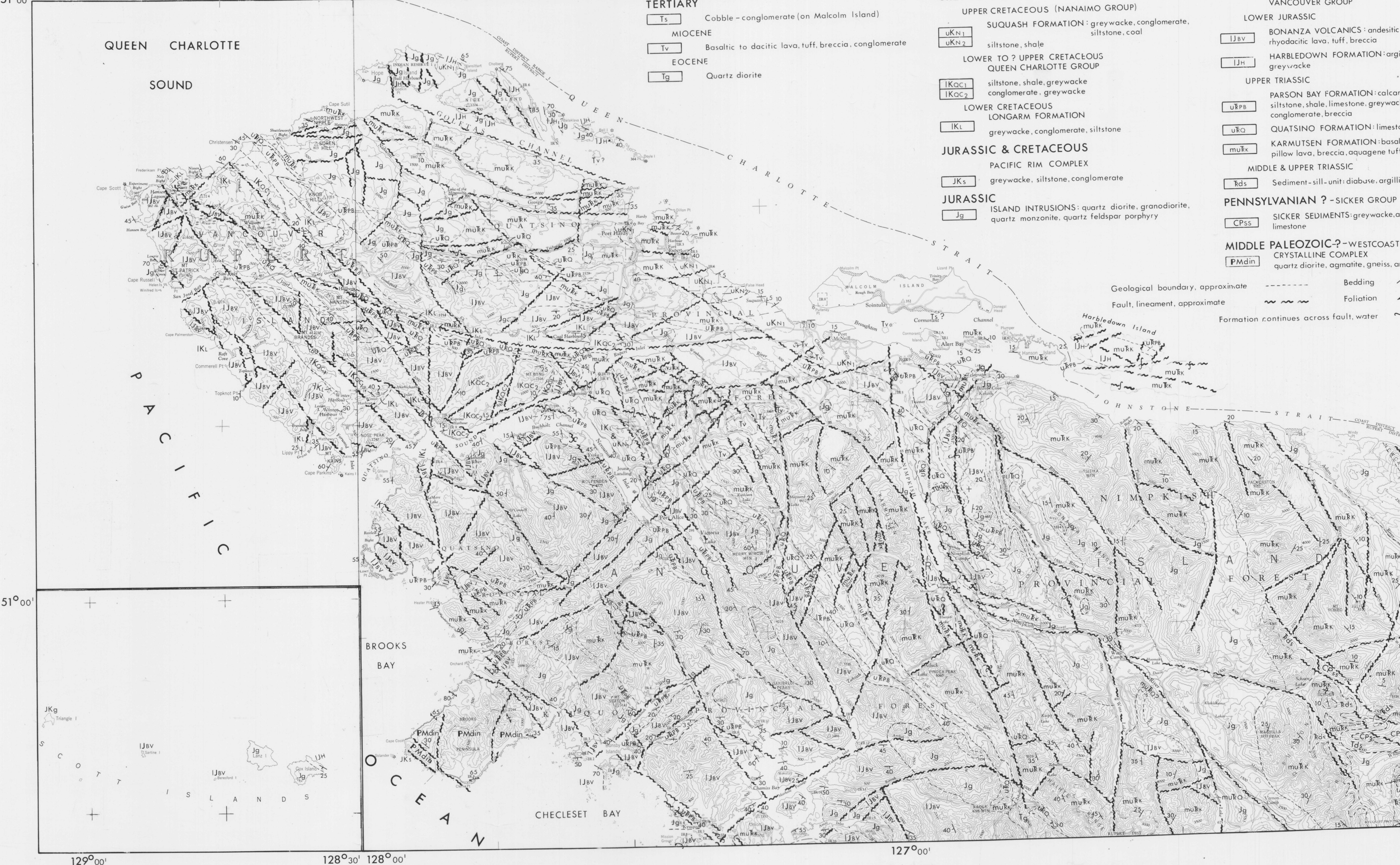
1. Data compiled from maps by the Geological Survey, Canada and Ministry of Lands, Forests and Water Resources, British Columbia.
2. Data compiled from maps by the Geological Survey, Canada and Ministry of Lands, Forests and Water Resources, British Columbia.
3. Data compiled from maps by the Geological Survey, Canada and Ministry of Lands, Forests and Water Resources, British Columbia.
4. Data compiled from maps by the Geological Survey, Canada and Ministry of Lands, Forests and Water Resources, British Columbia.

REFERENCE

Map of British Columbia, 1:250,000 scale, published by the Geological Survey of Canada, Ottawa, 1973.

OPEN FILE
 170
 October 1973
 GEOLOGICAL SURVEY
 OTTAWA

ALERT BAY - CAPE SCOTT MAP AREA
 92L-102L



This map has been produced from a scanned version of the original map. Reproduction for information only. Data not guaranteed.